

Wireless RGBTW Remote Controller

AL-60-03-0013



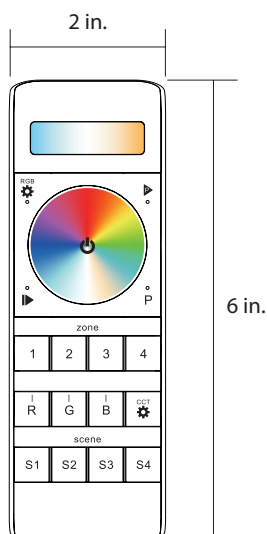
This Wireless RGBTW Remote Control and 5-Channels Wireless RGBTW Receiver (AL-60-03-0012 - sold separately) work together to control the color mode, speed, brightness and zone control for Radialux® RGB, RGBW, RGBTW tapelights. This controller can also be used to adjust the tuning range of our tunable tape lights. The controller can operate up to four independent zones, so you can have different color-changing effects in different rooms or parts of a space. The remote can save up to three custom colors or modes.



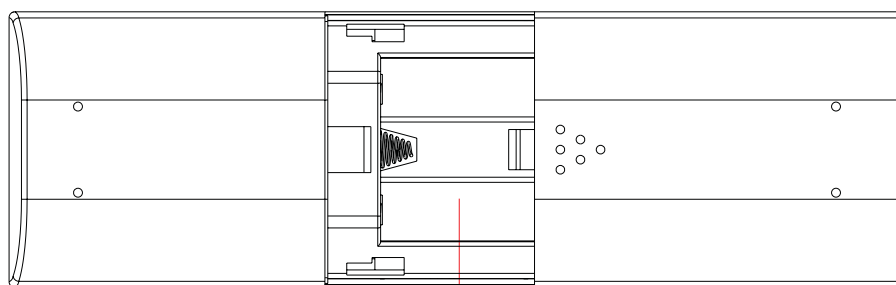
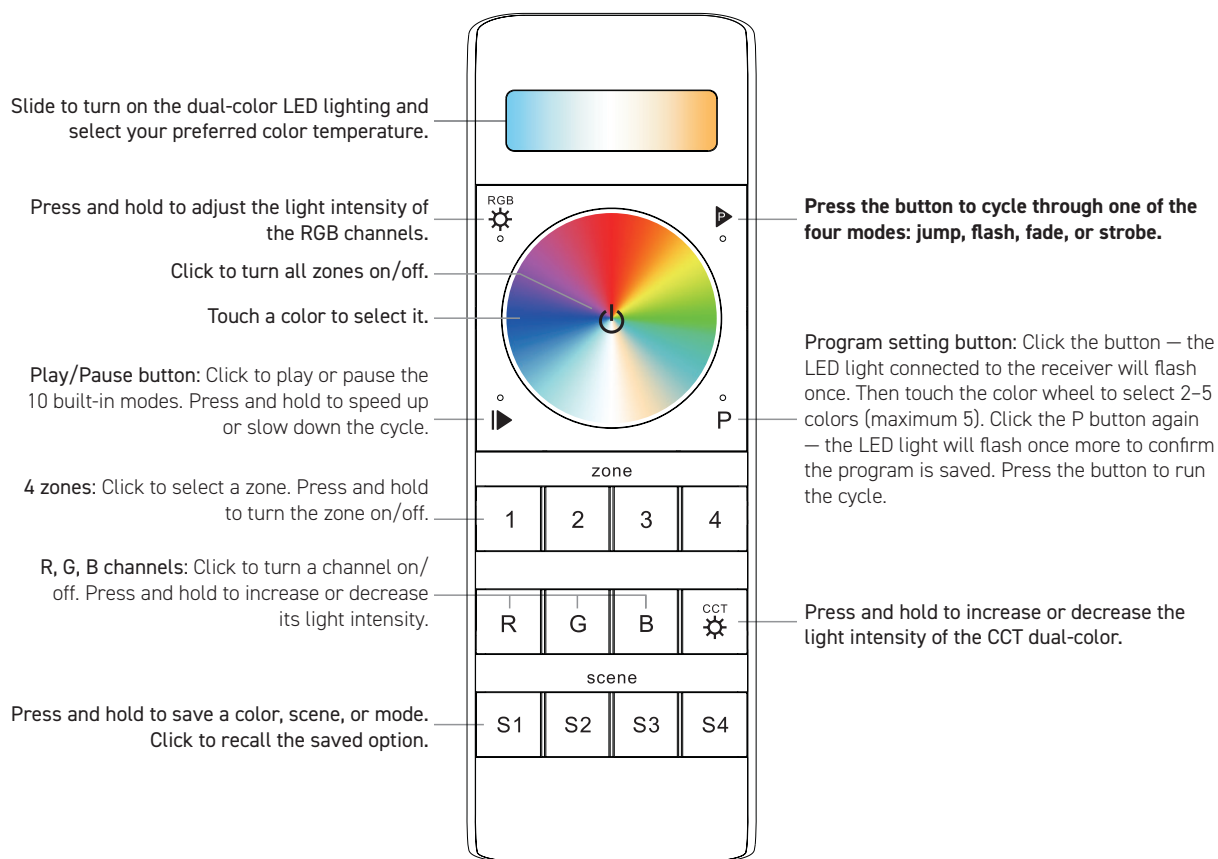
TECHNICAL INFORMATION

- Input Voltage: 12-24V DC
- Output signal: RF signal
- RF: 869.5 / 916.5 / 434 mhz
- Operating Temperature: 0-40°C
- Dimensions: 6in. x 2in. x 0.75in.
- Power Source: 4.5V (3xAAA battery)
- Control: RGB+CCT COLOR
- Control 4 zones of RF receiver
- RGB+CCT color controller
- Compatible with universal serie RF receiver
- 1 receiver can be paired by max 8 different remote controls
- Waterproof grade: IP20

DIMENSIONS



KEYPAD LAYOUT

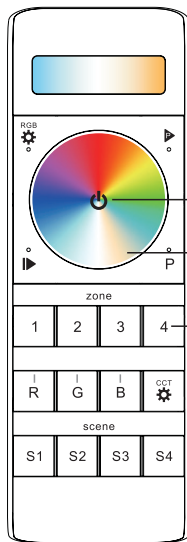


4.5V(3xAAA battery)

Back side

OPERATION INSTRUCTIONS

Pair with RF receiver (Method 1)



Step 1: Connect the RF receiver according to the wiring diagram (refer to the instructions of the RF receiver you want to pair).



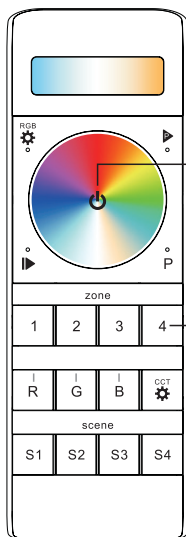
Step 3: Power off and then power on the receiver.

Step 2: Click the ON/OFF button to activate the remote.

Step 5: Touch the color wheel. The LED lights connected to the RF receiver will flicker once, indicating that the receiver has been successfully paired with Zone 4.

Step 4: Select and click a zone number (e.g., Zone 4).

Pair with RF receiver (Method 2)



Step 1: Connect the RF receiver according to the wiring diagram (refer to the instructions of the RF receiver you want to pair).



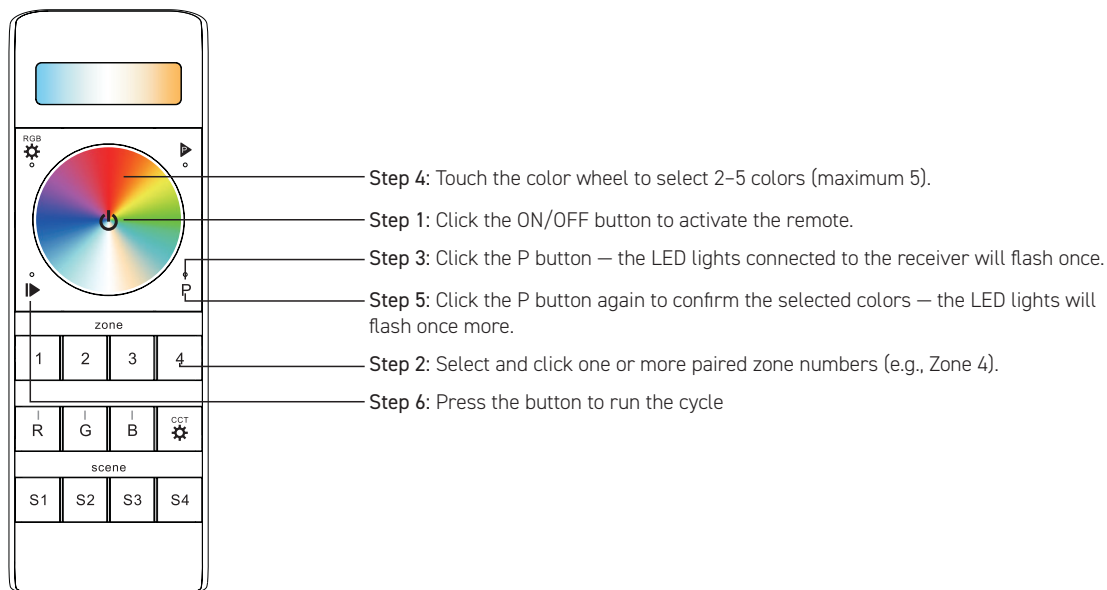
Step 3: Power off and then power on the receiver.

Step 2: Click the ON/OFF button to activate the remote.

Step 4: Select and click a zone number (e.g., Zone 4) twice, then press and hold it continuously within 10 seconds. The LED lights connected to the RF receiver will flicker once, indicating that the receiver has been successfully paired with Zone 4.

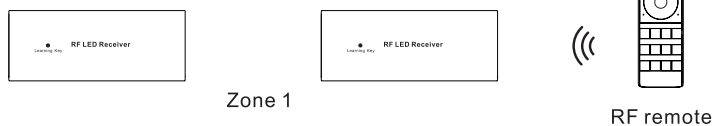
OPERATION INSTRUCTIONS

Program the running mode

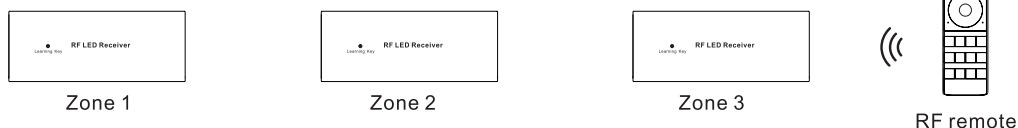


If you use multiple receivers, you have two choices:

Option 1: have all the receivers in the same zone, like zone 1



Option 2: have each receiver in a different zone, like zone 1, 2, 3 or 4



How to stop running mode of single color LED light caused by RGBW sender interference:

When pairing a single-color LED light with its dedicated remote, nearby RGBW senders may interfere and cause the light to enter a running mode. This running mode cannot be stopped using the single-color remote or by deleting the pairing.

To fix this:

1. Pair the RGBW remote with the receiver using "Pair with RF receiver (Method 2)" and then touch the color wheel on the RGBW remote to stop the running mode.
2. Delete the pairing, then pair the receiver again with the single-color remote. The LED light can now be controlled normally.