

TRIM LESS LIGHT ING



MUDR 1 AND 2 CHANNELS

Seamless Illumination. Endless Design Possibilities.

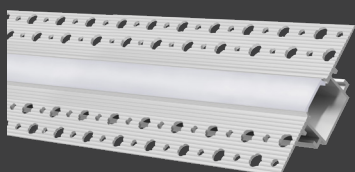
Offered in two sizes, the Mudr trimless recessed linear LED lighting channels install flush into 5/8-inch drywall to provide seamless integration into ceilings and walls, resulting in clean lines of light.

The Mudr channels feature high-quality aluminum construction with a frosted lens, making it an ideal solution for multiple applications.

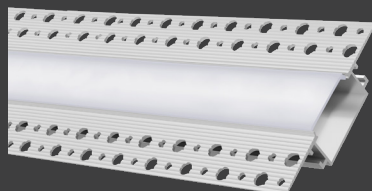
Applications:

- Offices
- Healthcare
- Hospitality
- Residential

Mudr 1



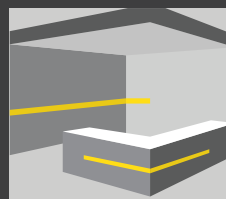
Mudr 2



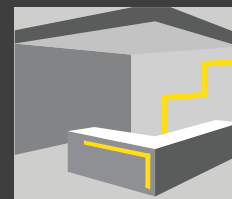
Endless Design Possibilities

The thoughtful design allows for seamless installations wrapping from ceiling to wall or zig-zag and other unique configurations.

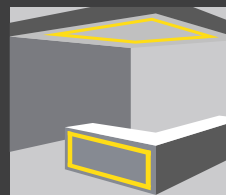
Wrapping
Configuration



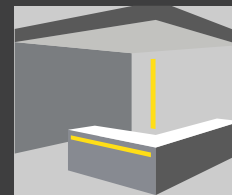
Zig-Zag
Configuration



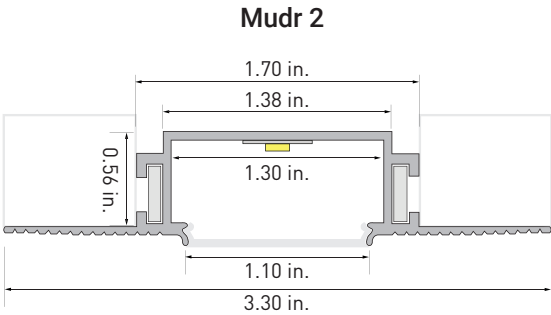
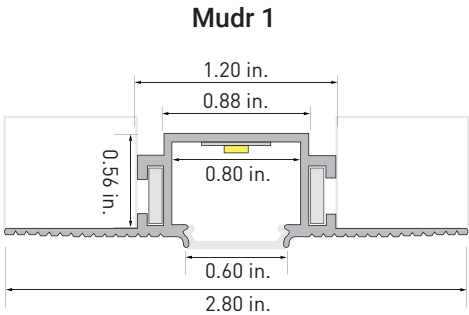
Picture Frame
Configuration



Straight
Configuration

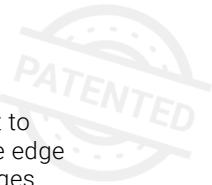


Product Specs



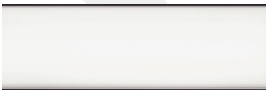
Patented Lens Design

The angled foot design allows light to shine without obstruction from one edge to the other resulting in no dark edges.

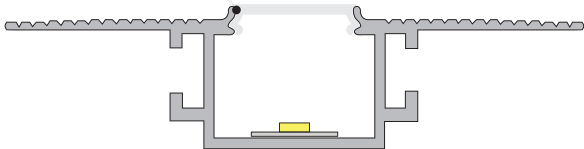


Mudr 1 has a **flexible silicone lens** designed to virtually eliminate visible lens seams by creating continuous lines of light up to 200 feet. (For straight runs only)

Mudr 1 and Mudr 2 Lens
Edge to edge illumination



Competitive Models Lens
Visible dark edges



Convenient Kits

Include all necessary channel components for simplified ordering and easy installation

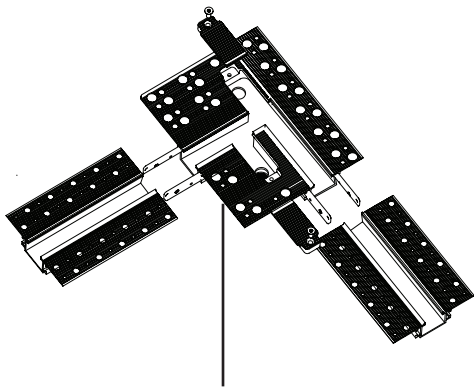
Item Number	Description
AL-50-29-0111-AL-KIT	Mudr 1 In-Wall - 4 ft. Kit Includes 1 Channel and 1 Diffuser Cover
AL-50-29-0115-AL-KIT	Mudr 1 In-Wall - 7 ft. Kit Includes 1 Channel and 1 Diffuser Cover
AL-50-29-9932-SFR-CU-FT	Mudr 1 In-Wall - Frosted Silicone Cover, 1 foot increment
AL-50-29-POWERED-CORNER-KIT	Mudr 1 In-Wall - Powered Corner Kit Includes 1 Powered Corner with Cover and Hex Screws, 1 Mounting Plate with TSGB and Mounting Screws, 4 Universal Straight Connectors with Set Screws, 2 Wire Strain Reliefs, 2 Nipple Pipes, 2 Lock Washers, and 2 Hex Nuts
AL-50-29-POWERED-END-CAP-KIT	Mudr 1 In-Wall - Powered End Cap Kit Includes 1 Powered End Cap with Cover and Screws, 1 Mounting Plate with TSGB and Screws, 2 Universal Straight Connectors with Set Screws, 1 Wire Strain Relief, 1 Nipple Pipe, 1 Lock Washer, and 1 Hex Nut
AL-50-30-0111-AL-KIT	Mudr 2 In-Wall - 4 ft. Kit Includes 1 Channel and 1 Diffuser Cover
AL-50-30-0115-AL-KIT	Mudr 2 In-Wall - 7 ft. Kit Includes 1 Channel and 1 Diffuser Cover
AL-50-30-POWERED-CORNER-KIT	Mudr 2 In-Wall - Powered Corner Kit Includes 1 Powered Corner with Cover and Hex Screws, 1 Mounting Plate with TSGB and Mounting Screws, 4 Universal Straight Connectors with Set Screws, 2 Wire Strain Reliefs, 2 Nipple Pipes, 2 Lock Washers, and 2 Hex Nuts
AL-50-30-POWERED-END-CAP-KIT	Mudr 2 In-Wall - Powered End Cap Kit Includes 1 Powered End Cap with Cover and Hex Screws, 1 Mounting Plate with TSGB and Mounting Screws, 2 Universal Straight Connectors with Set Screws, 1 Wire Strain Relief, 1 Nipple Pipe, 1 Lock Washer, and 1 Hex Nut



Versatile End Cap Options

Powered Corners

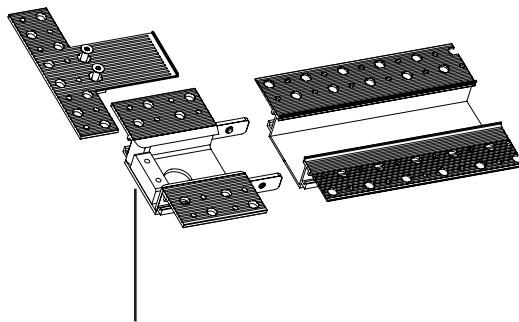
Mudr 1 - AL-50-29-POWERED-CORNER-KIT
Mudr 2 - AL-50-30-POWERED-CORNER-KIT



Provides power access and convenient wire management at a corner of a Wrapping, Zig-Zag, Picture Frame, or Custom configuration

Powered End Caps

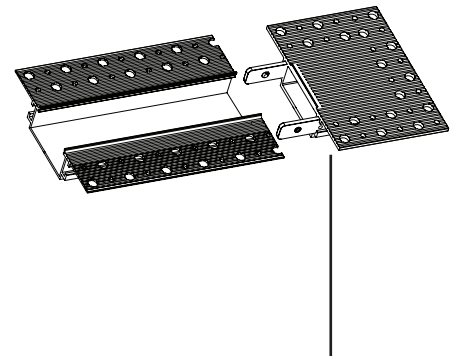
Mudr 1 - AL-50-29-POWERED-END-CAP
Mudr 2 - AL-50-30-POWERED-END-CAP



Provides power access and convenient wire management at one end of a fixture

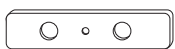
Non-Powered End Caps

Mudr 1 - AL-50-29-NON-POWERED-EC
Mudr 2 - AL-50-30-NON-POWERED-EC

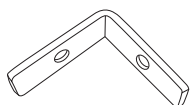


Provides space to conceal any excess tape light to maintain even illumination from start to finish

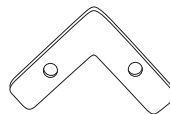
Accessories (For Mitre Cuts)



Straight Connecting Bracket - 2-Pack
AL-50-29-9992-AL
AL-50-30-9992-AL



L Bracket for Mitred Corners - 2-Pack
AL-50-29-9993-AL
AL-50-30-9993-AL



L Bracket for Beveled Corners - 2-Pack
AL-50-29-9994-AL
AL-50-30-9994-AL



Mitre cuts available through the custom department.

ALLOYLED®



Order Now!



Email: solutions@AlloyLED.com



Call: 800.910.LEDS (5337)



Fax: 510.338.6173

www.AlloyLED.com

Copyright © 2025 Alloy LED. All rights reserved.

AL-99-99-2025-MUDR