

ALLOY LED®

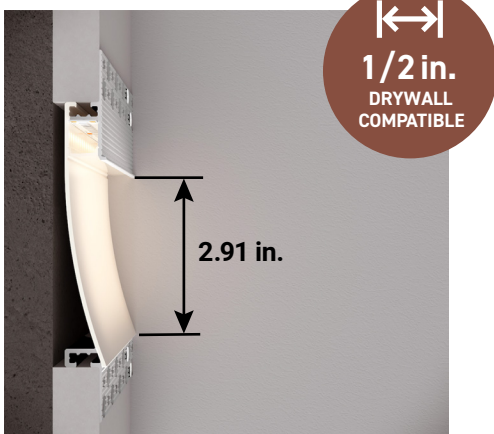
Mudr AlCove 3 in. & 4 in.

Recessed Mud-In Channel

Mudr ArcCove 3 in. & 4 in. features a scoop design that creates an attractive light gradient in walls.

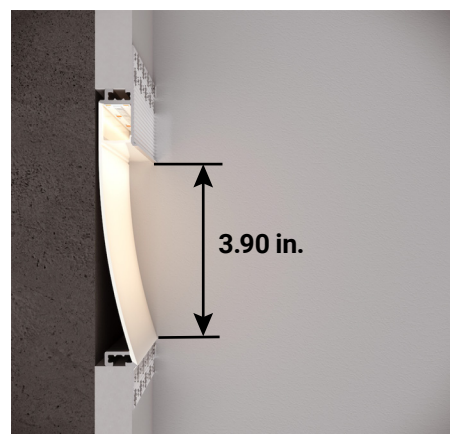
Mudr AlCove 3 in.

Narrow aperture can be used with ½ in. and ⅝ in. drywall.



Mudr AlCove 4 in.

Wide aperture can be used with ⅝ in. drywall.



Corner Compatible

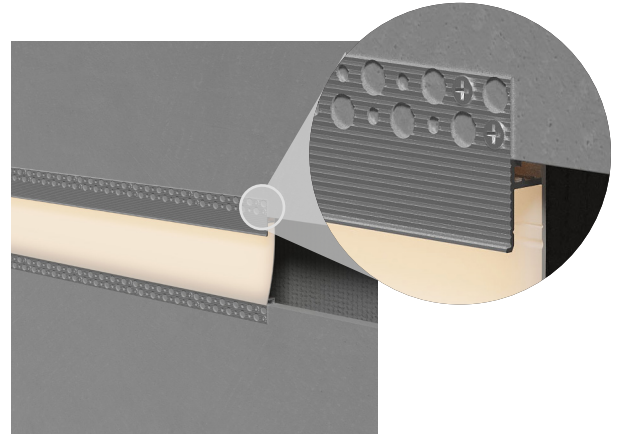


Designed to easily wrap around corners with no light leak with mitre cuts order through our **Build-To-Order Program**.

Easy Installation & Clean Finish



Simply place the channel against the wall or ceiling and screw it into place. The grooved flanges allow for easy **mud-in and painting** to blend into any space.



Linking System for Multiple Segments



Linking system provides a straightforward solution for connecting and perfectly aligning profile sections, ensuring a seamless, unified appearance without visible gaps or misalignment.



Order Now!



Email: solutions@AlloyLED.com



Call: 800.910.LEDS (5337)



Fax: 510.338.6173

www.AlloyLED.com

Copyright © 2024 Alloy LED. All rights reserved.

AL-99-99-2024-ALCOVE