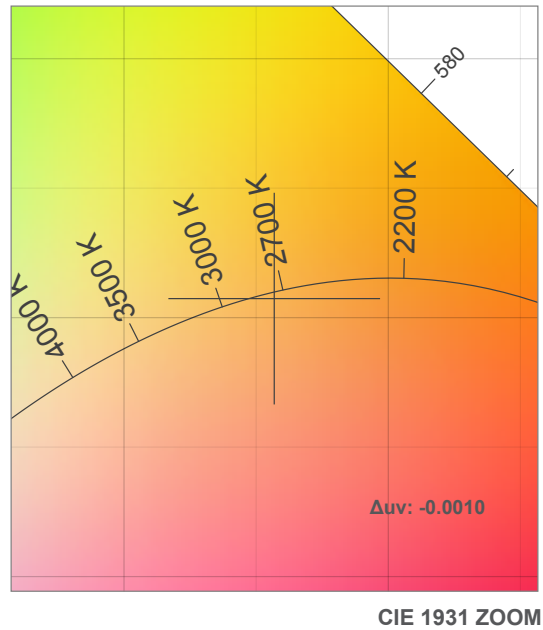
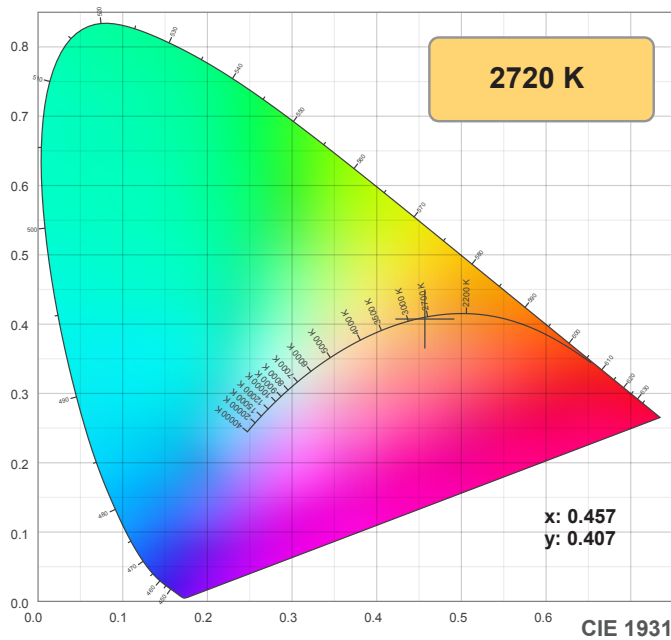
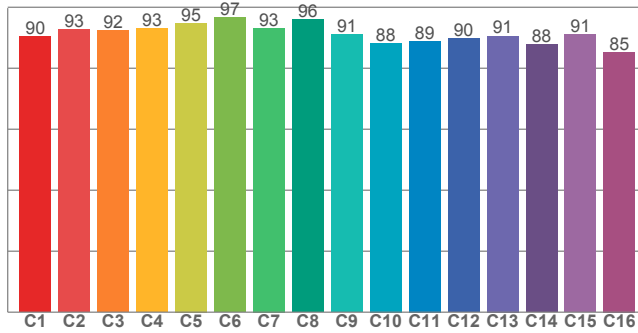


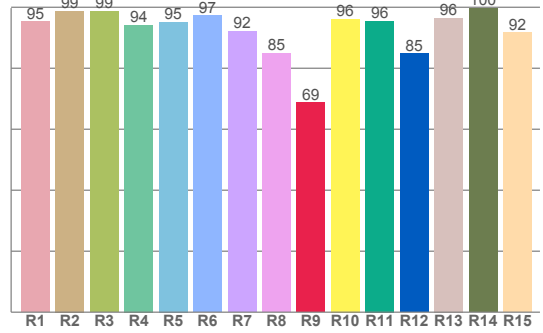
20%



TM30: 91.3



CRI: 94.5 (R1-R8)



CRI R values, only R1-R8 are used to calculate final CRI value

R1	R2	R3	R4	R5	R6	R7	R8	R9	R10	R11	R12	R13	R14	R15
95.3	98.7	98.6	94.2	95.1	97.2	92.1	84.9	68.7	96.1	95.5	84.7	96.4	99.6	91.7

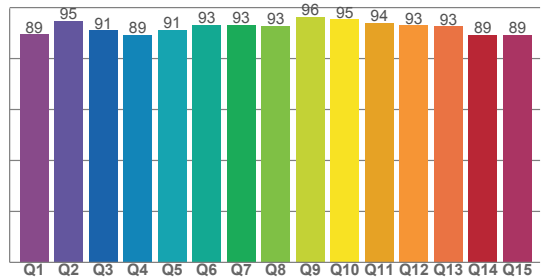
TM30 C values, 16 binned values out of total of 99 C values

C1	C2	C3	C4	C5	C6	C7	C8	C9	C10	C11	C12	C13	C14	C15	C16
90.5	92.7	92.5	93.0	94.8	96.6	93.2	95.9	91.1	88.3	88.9	89.8	90.6	87.7	91.1	85.3

CQS Q values

Q1	Q2	Q3	Q4	Q5	Q6	Q7	Q8	Q9	Q10	Q11	Q12	Q13	Q14	Q15
89.4	94.7	91.0	89.2	91.2	93.1	93.1	92.8	96.4	95.4	94.1	93.1	92.7	89.3	89.3

CQS: 91.9



Color parameters

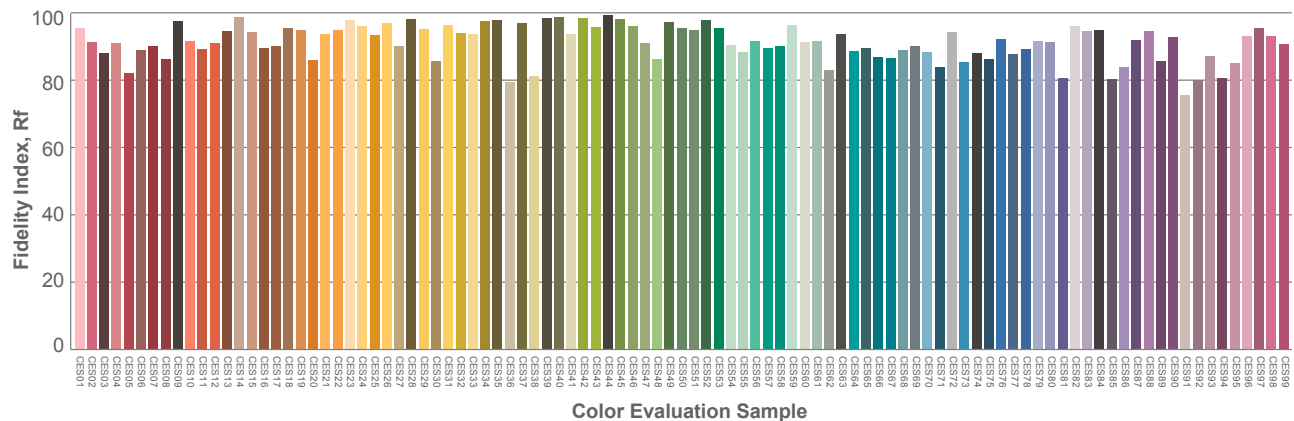
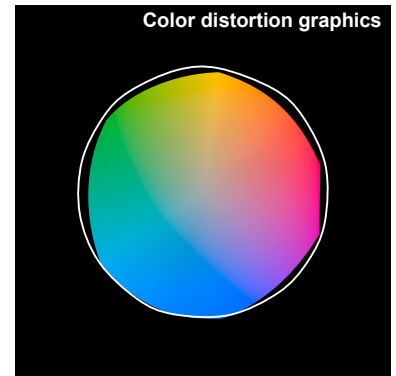
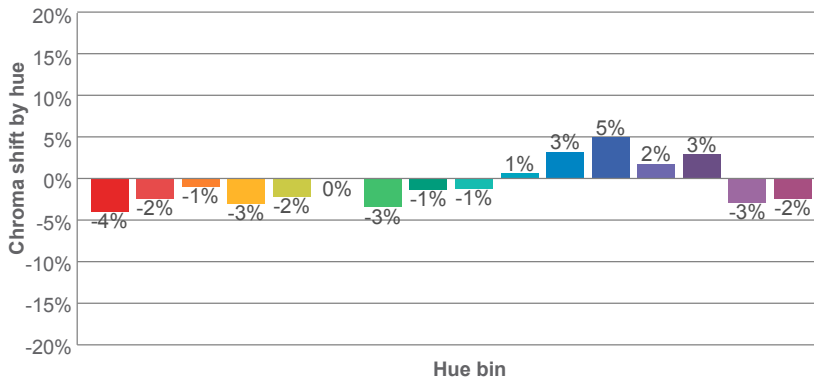
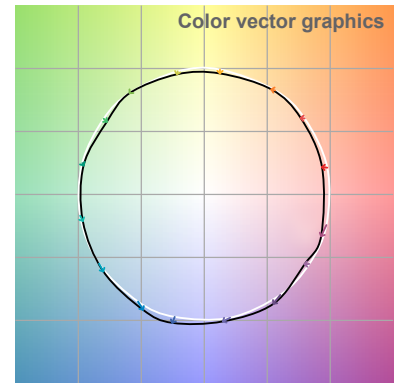
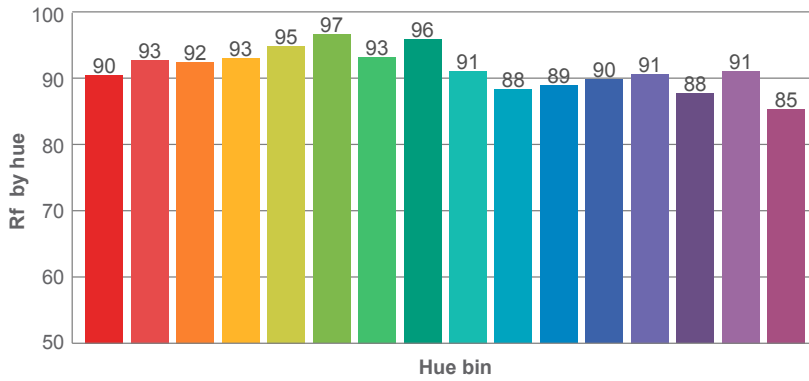
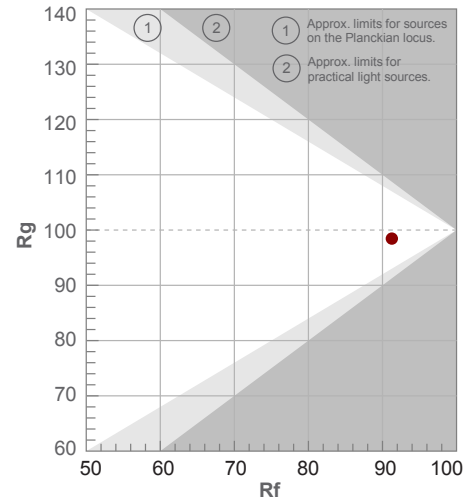
Color temperature	Color rendering index	Red component	Color fidelity	Color gamut	Color quality scale	Color coordinate cie 1931	Color coordinate cie 1931	Color coordinate	Color coordinate	Color deviation from black body
CCT	CRI	CRI R9	TM30 Rf	TM30 Rg	CQS	x	y	u	v	Δuv
2720 K	94.5	68.7	91.3	98.5	91.9	0.457	0.407	0.262	0.350	-0.0010

20%

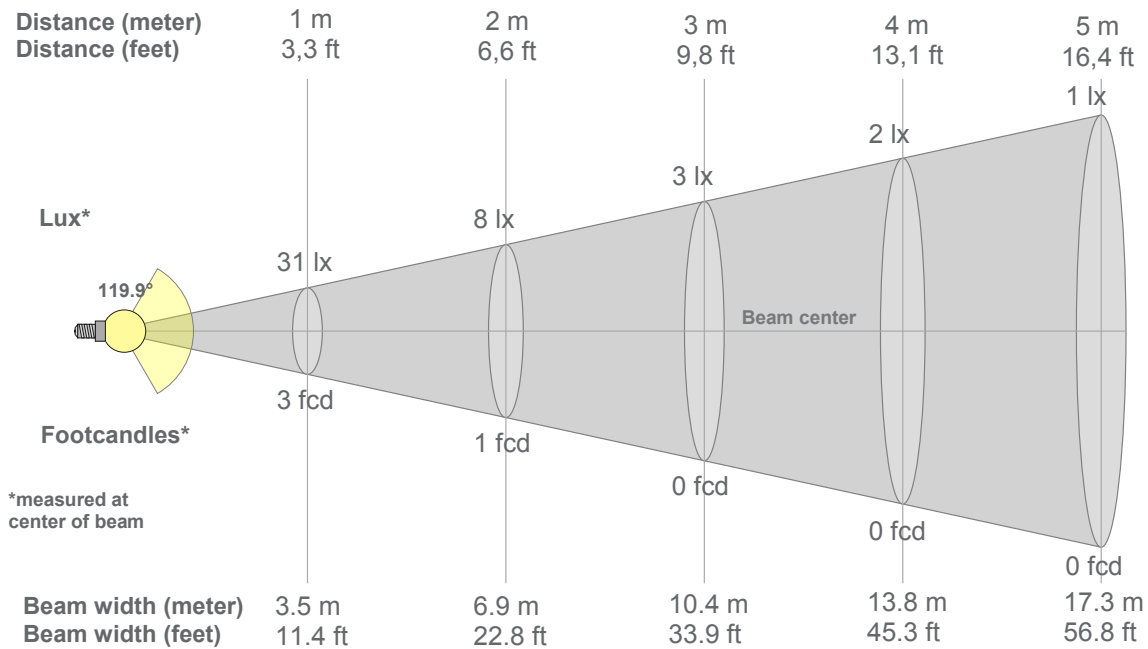
Rf 91.3
Fidelity index Rf

Rg 98.5
Gammut index Rg

Hue Bin	R _f	Graphic shifts (%)	
		Chroma	Hue
1	90	-4%	1%
2	93	-2%	2%
3	92	-1%	3%
4	93	-3%	-1%
5	95	-2%	1%
6	97	0%	0%
7	93	-3%	1%
8	96	-1%	2%
9	91	-1%	5%
10	88	1%	7%
11	89	3%	7%
12	90	5%	-1%
13	91	2%	-6%
14	88	3%	-8%
15	91	-3%	-2%
16	85	-2%	-10%



20%



Beam intensities from 1-20m

1m	2m	3m	4m	5m	6m	7m	8m	9m	10m	11m	12m	13m	14m	15m	16m	17m	18m	19m	20m
3.3ft	6.6ft	9.8ft	13.1ft	16.4ft	19.7ft	23ft	26.2ft	29.5ft	32.8ft	36.1ft	39.4ft	42.7ft	45.9ft	49.2ft	52.5ft	55.8ft	59.1ft	62.3ft	65.6ft
31lx	8lx	3lx	2lx	1lx	1lx	1lx	0lx	0lx	0lx	0lx	0lx	0lx	0lx	0lx	0lx	0lx	0lx	0lx	0lx
2.9fcd	0.7fcd	0.3fcd	0.2fcd	0.1fcd	0.1fcd	0.1fcd	0fcd	0fcd	0fcd	0fcd	0fcd	0fcd	0fcd	0fcd	0fcd	0fcd	0fcd	0fcd	0fcd

Intensities in 0° c-plane

0°	5°	10°	15°	20°	25°	30°	35°	40°	45°	50°	55°	60°	65°	70°	75°	80°	85°	90°	95°
31.1	30.9	30.4	29.7	28.9	27.9	26.6	25.2	23.6	21.8	19.9	17.8	15.5	13.1	10.6	7.9	5.4	3.0	1.2	0.4
100%	99%	98%	96%	93%	90%	86%	81%	76%	70%	64%	57%	50%	42%	34%	26%	17%	10%	4%	1%

Intensities in 90° c-plane

0°	5°	10°	15°	20°	25°	30°	35°	40°	45°	50°	55°	60°	65°	70°	75°	80°	85°	90°	95°
31.1	30.9	30.4	29.7	28.9	27.9	26.6	25.2	23.6	21.8	19.9	17.8	15.5	13.1	10.6	7.9	5.4	3.0	1.2	0.4
100%	99%	98%	96%	93%	90%	86%	81%	76%	70%	64%	57%	50%	42%	34%	26%	17%	10%	4%	1%

Intensities in 180° c-plane

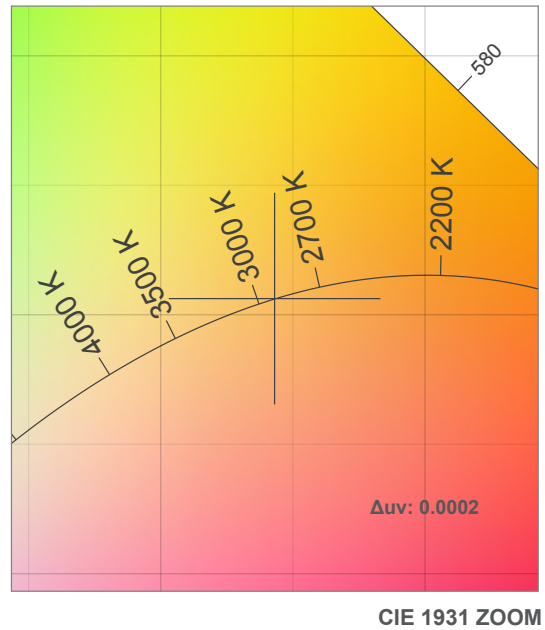
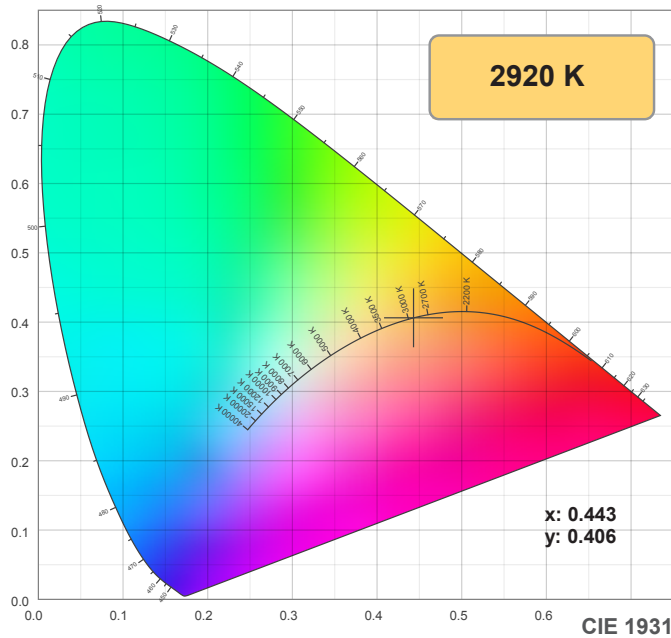
0°	5°	10°	15°	20°	25°	30°	35°	40°	45°	50°	55°	60°	65°	70°	75°	80°	85°	90°	95°
31.1	31.0	30.7	30.1	29.2	28.2	26.9	25.4	23.8	21.9	19.9	17.8	15.5	13.1	10.6	8.0	5.4	3.0	1.2	0.4
100%	100%	99%	97%	94%	91%	87%	82%	77%	71%	64%	57%	50%	42%	34%	26%	18%	10%	4%	1%

Intensities in 270° c-plane

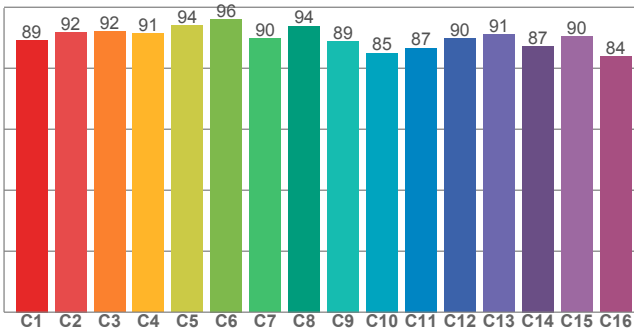
0°	5°	10°	15°	20°	25°	30°	35°	40°	45°	50°	55°	60°	65°	70°	75°	80°	85°	90°	95°
31.1	31.0	30.7	30.1	29.2	28.2	26.9	25.4	23.8	21.9	19.9	17.8	15.5	13.1	10.6	8.0	5.4	3.0	1.2	0.4
100%	100%	99%	97%	94%	91%	87%	82%	77%	71%	64%	57%	50%	42%	34%	26%	18%	10%	4%	1%

Beam angle 50%	Field angle 10%	Cutoff angle 2,5%	Intensity ratio in 120° cone	Intensity ratio in 90° cone
119.9°	169.4°	182.9°	73.3%	48.9%

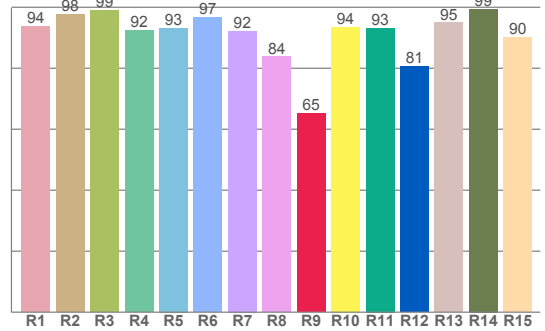
50%



TM30: 90.0



CRI: 93.6 (R1-R8)



CRI R values, only R1-R8 are used to calculate final CRI value

R1	R2	R3	R4	R5	R6	R7	R8	R9	R10	R11	R12	R13	R14	R15
93.8	97.7	98.9	92.5	93.2	96.6	92.2	83.8	65.2	93.6	93.2	80.6	94.9	99.5	90.2

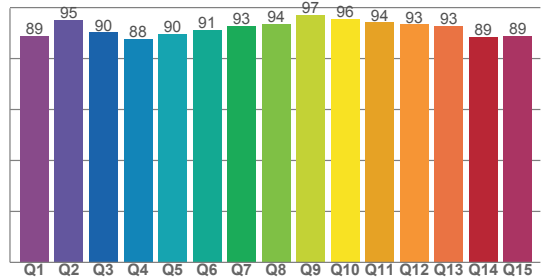
TM30 C values, 16 binned values out of total of 99 C values

C1	C2	C3	C4	C5	C6	C7	C8	C9	C10	C11	C12	C13	C14	C15	C16
89.2	91.9	92.1	91.4	94.0	96.1	89.7	93.9	88.9	85.1	86.7	89.8	91.2	87.3	90.4	84.0

CQS Q values

Q1	Q2	Q3	Q4	Q5	Q6	Q7	Q8	Q9	Q10	Q11	Q12	Q13	Q14	Q15
88.8	95.2	90.3	87.7	89.7	91.3	92.8	93.6	97.2	95.7	94.2	93.4	92.8	88.6	89.0

CQS: 91.4



Color parameters

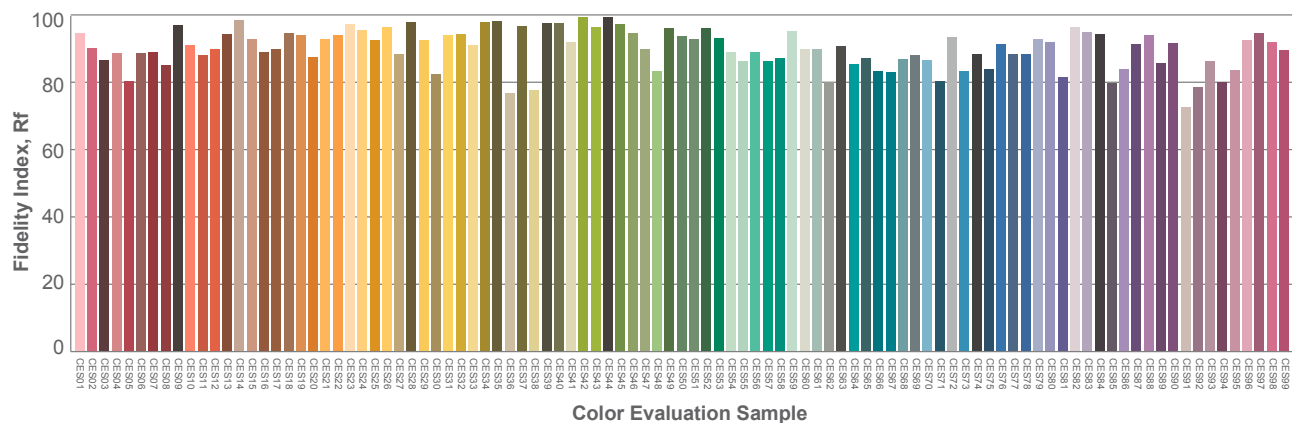
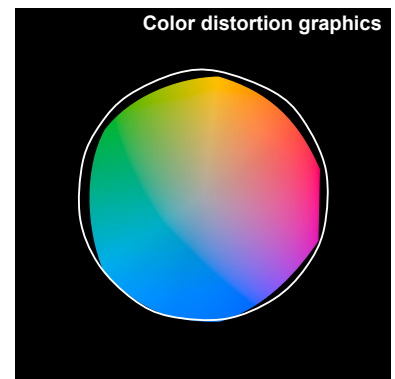
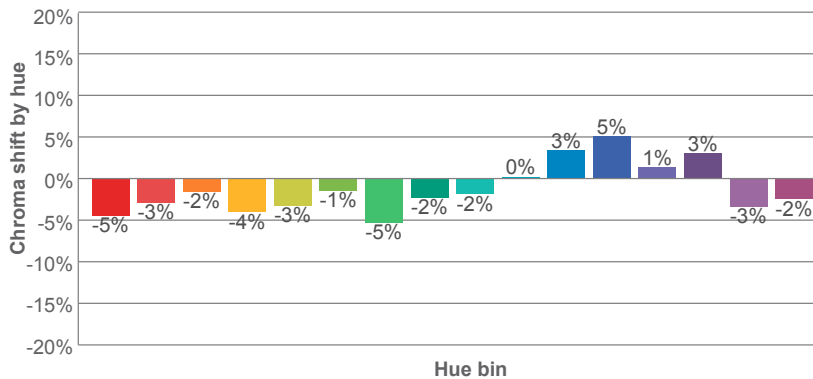
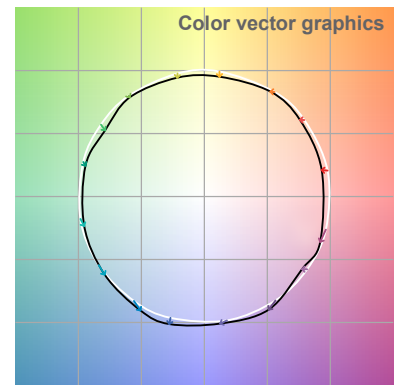
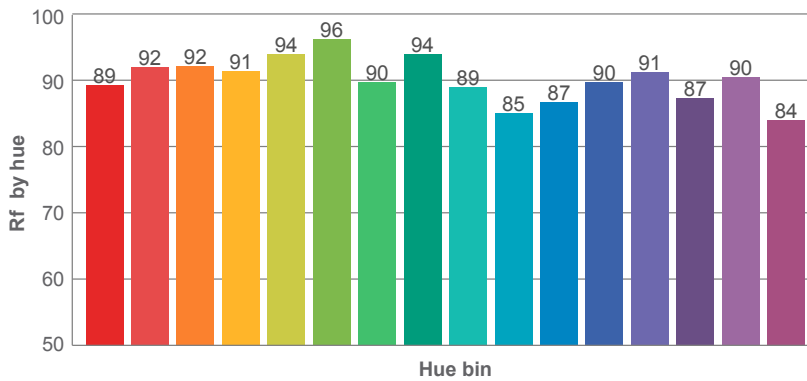
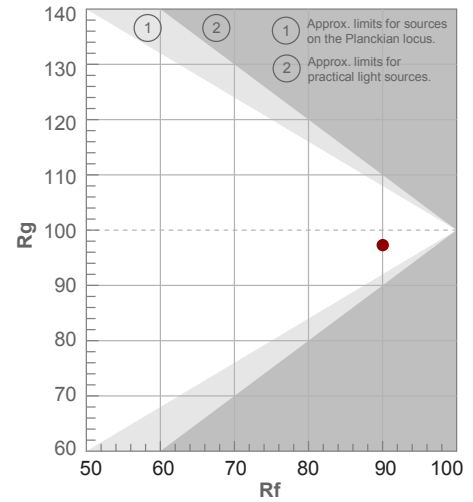
Color temperature	Color rendering index	Red component	Color fidelity	Color gamut	Color quality scale	Color coordinate cie 1931	Color coordinate cie 1931	Color coordinate	Color coordinate	Color deviation from black body
CCT	CRI	CRI R9	TM30 Rf	TM30 Rg	CQS	x	y	u	v	Δuv
2920 K	93.6	65.2	90.0	97.3	91.4	0.443	0.406	0.254	0.349	0.0002

50%

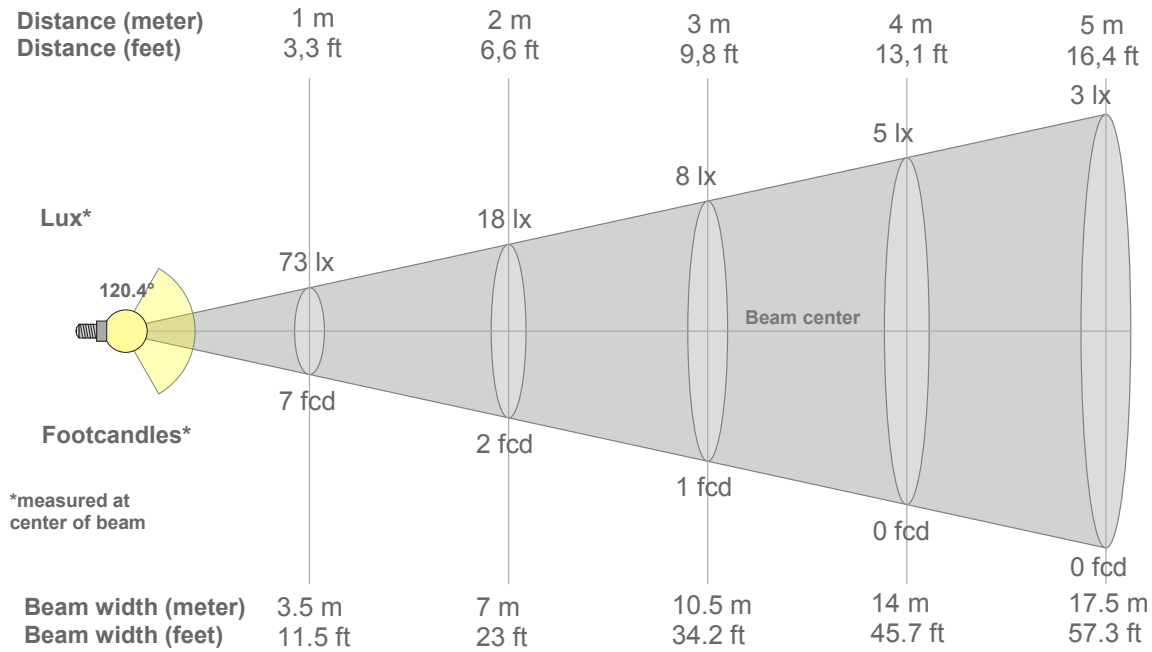
Rf 90.0
Fidelity index Rf

Rg 97.3
Gammut index Rg

Hue Bin	R _f	Graphic shifts (%)	
		Chroma	Hue
1	89	-5%	1%
2	92	-3%	2%
3	92	-2%	3%
4	91	-4%	-1%
5	94	-3%	1%
6	96	-1%	0%
7	90	-5%	2%
8	94	-2%	3%
9	89	-2%	6%
10	85	0%	9%
11	87	3%	8%
12	90	5%	0%
13	91	1%	-6%
14	87	3%	-9%
15	90	-3%	-2%
16	84	-2%	-11%



50%



Beam intensities from 1-20m

1m	2m	3m	4m	5m	6m	7m	8m	9m	10m	11m	12m	13m	14m	15m	16m	17m	18m	19m	20m
3.3ft	6.6ft	9.8ft	13.1ft	16.4ft	19.7ft	23ft	26.2ft	29.5ft	32.8ft	36.1ft	39.4ft	42.7ft	45.9ft	49.2ft	52.5ft	55.8ft	59.1ft	62.3ft	65.6ft
73lx	18lx	8lx	5lx	3lx	2lx	1lx	1lx	1lx	1lx	1lx	1lx	0lx	0lx	0lx	0lx	0lx	0lx	0lx	0lx
6.7fcd	1.7fcd	0.7fcd	0.4fcd	0.3fcd	0.2fcd	0.1fcd	0.1fcd	0.1fcd	0.1fcd	0.1fcd	0fcd	0fcd	0fcd	0fcd	0fcd	0fcd	0fcd	0fcd	0fcd

Intensities in 0° c-plane

0°	5°	10°	15°	20°	25°	30°	35°	40°	45°	50°	55°	60°	65°	70°	75°	80°	85°	90°	95°
72.6	72.0	70.9	69.3	67.5	65.0	62.1	58.8	55.0	51.0	46.6	41.8	36.5	30.9	24.9	18.8	12.7	7.0	2.5	0.9
100%	99%	98%	96%	93%	90%	86%	81%	76%	70%	64%	58%	50%	43%	34%	26%	17%	10%	3%	1%

Intensities in 90° c-plane

0°	5°	10°	15°	20°	25°	30°	35°	40°	45°	50°	55°	60°	65°	70°	75°	80°	85°	90°	95°
72.6	72.0	70.9	69.3	67.5	65.0	62.1	58.8	55.0	51.0	46.6	41.8	36.5	30.9	24.9	18.8	12.7	7.0	2.5	0.9
100%	99%	98%	96%	93%	90%	86%	81%	76%	70%	64%	58%	50%	43%	34%	26%	17%	10%	3%	1%

Intensities in 180° c-plane

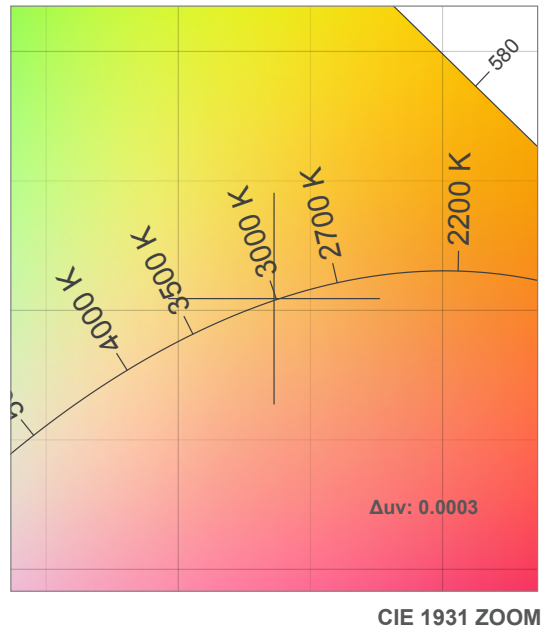
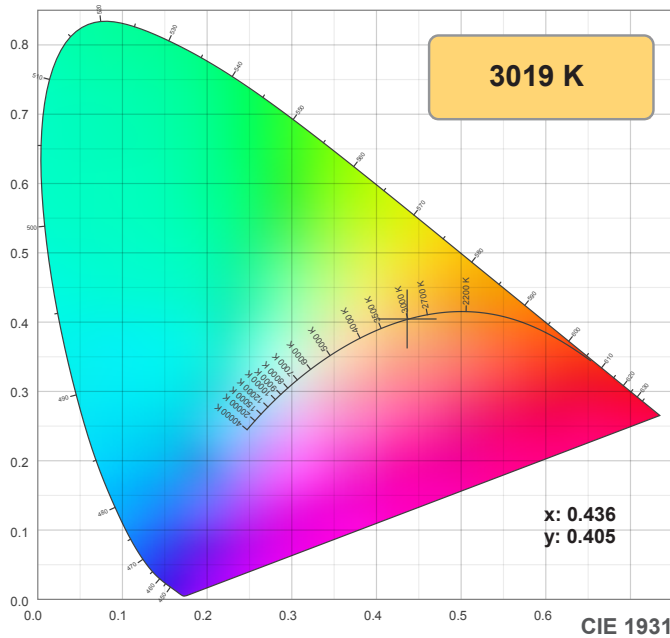
0°	5°	10°	15°	20°	25°	30°	35°	40°	45°	50°	55°	60°	65°	70°	75°	80°	85°	90°	95°
72.6	72.5	71.7	70.4	68.6	66.1	63.1	59.7	56.0	51.6	46.8	41.8	36.5	30.9	24.9	18.8	12.6	6.9	2.8	0.8
100%	100%	99%	97%	95%	91%	87%	82%	77%	71%	65%	58%	50%	43%	34%	26%	17%	10%	4%	1%

Intensities in 270° c-plane

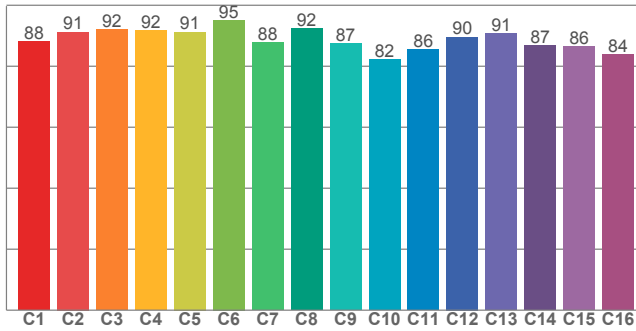
0°	5°	10°	15°	20°	25°	30°	35°	40°	45°	50°	55°	60°	65°	70°	75°	80°	85°	90°	95°
72.6	72.5	71.7	70.4	68.6	66.1	63.1	59.7	56.0	51.6	46.8	41.8	36.5	30.9	24.9	18.8	12.6	6.9	2.8	0.8
100%	100%	99%	97%	95%	91%	87%	82%	77%	71%	65%	58%	50%	43%	34%	26%	17%	10%	4%	1%

Beam angle 50%	Field angle 10%	Cutoff angle 2,5%	Intensity ratio in 120° cone	Intensity ratio in 90° cone
120.4°	169.4°	183°	73.4%	48.8%

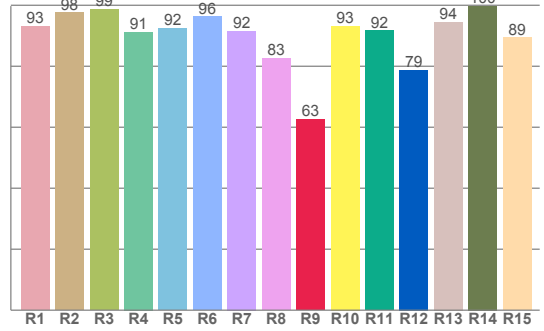
100%



TM30: 89.0



CRI: 92.9 (R1-R8)



CRI R values, only R1-R8 are used to calculate final CRI value

R1	R2	R3	R4	R5	R6	R7	R8	R9	R10	R11	R12	R13	R14	R15
93.1	97.6	98.6	91.2	92.4	96.3	91.6	82.6	62.6	93.1	91.7	78.8	94.5	99.7	89.4

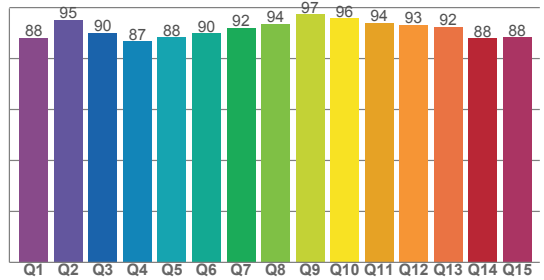
TM30 C values, 16 binned values out of total of 99 C values

C1	C2	C3	C4	C5	C6	C7	C8	C9	C10	C11	C12	C13	C14	C15	C16
88.2	91.3	92.0	91.7	91.3	95.1	87.7	92.4	87.4	82.2	85.5	89.6	90.8	86.7	86.4	83.9

CQS Q values

Q1	Q2	Q3	Q4	Q5	Q6	Q7	Q8	Q9	Q10	Q11	Q12	Q13	Q14	Q15
88.0	95.2	90.1	86.7	88.3	89.8	92.1	93.6	92.2	95.8	94.1	93.1	92.5	87.9	88.4

CQS: 90.8



Color parameters

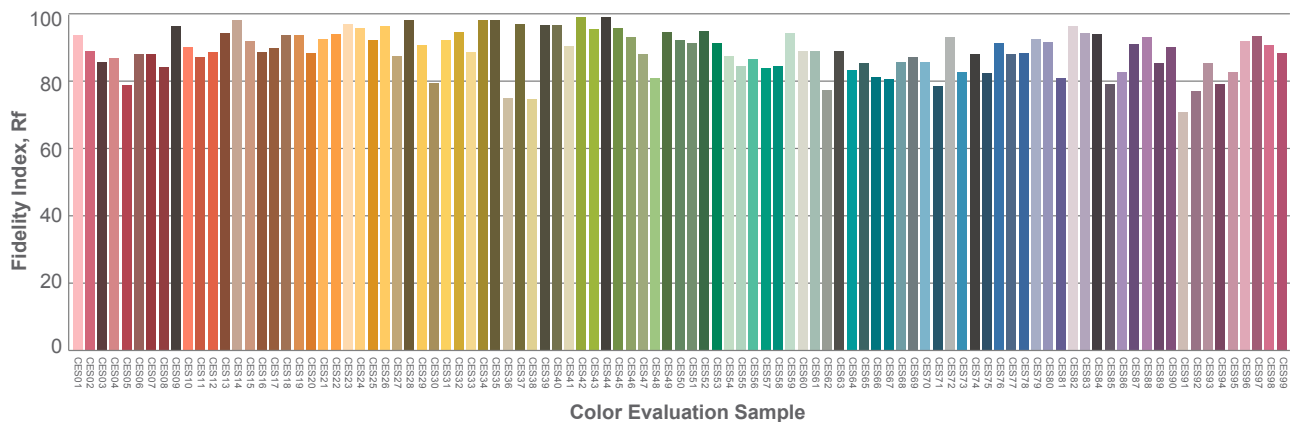
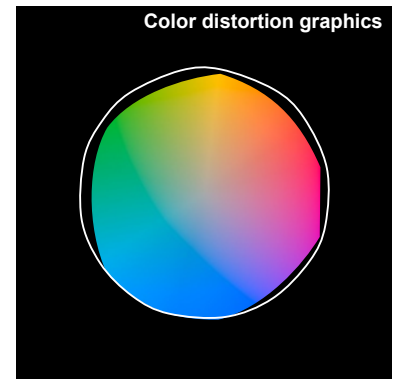
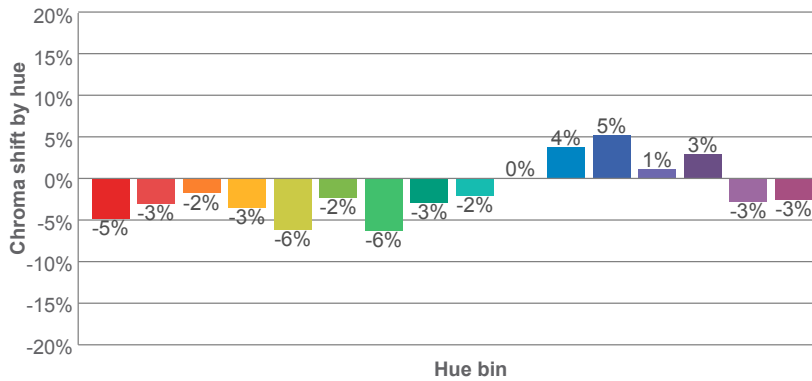
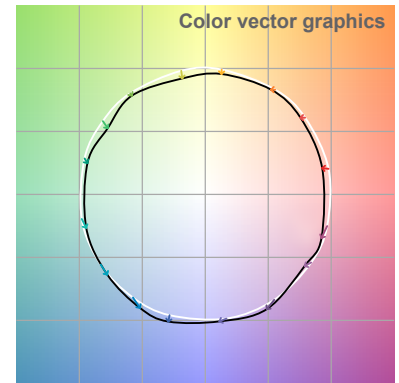
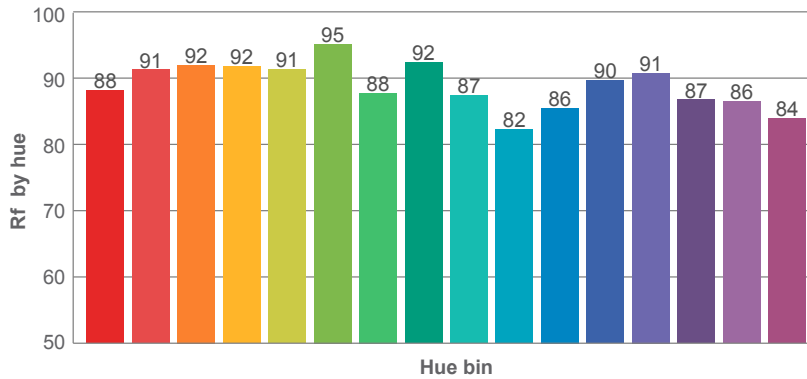
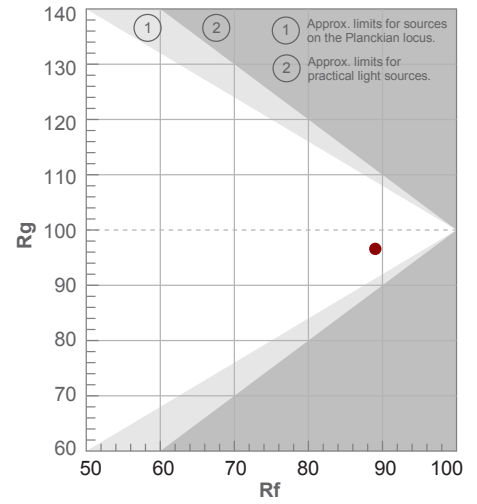
Color temperature	Color rendering index	Red component	Color fidelity	Color gamut	Color quality scale	Color coordinate cie 1931	Color coordinate cie 1931	Color coordinate	Color coordinate	Color deviation from black body
CCT	CRI	CRI R9	TM30 Rf	TM30 Rg	CQS	x	y	u	v	Δuv
3019 K	92.9	62.6	89.0	96.6	90.8	0.436	0.405	0.250	0.348	0.0003

100%

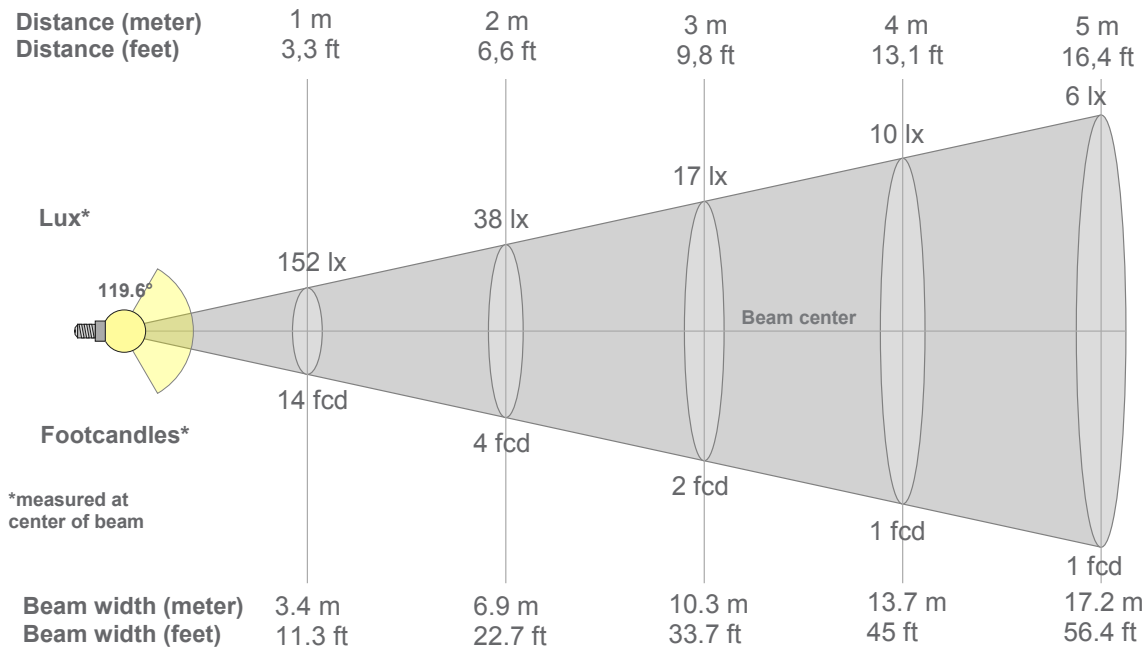
Rf 89.0
Fidelity index Rf

Rg 96.6
Gammut index Rg

Hue Bin	R _f	Graphic shifts (%)	
		Chroma	Hue
1	88	-5%	2%
2	91	-3%	2%
3	92	-2%	3%
4	92	-3%	-1%
5	91	-6%	0%
6	95	-2%	0%
7	88	-6%	3%
8	92	-3%	3%
9	87	-2%	8%
10	82	0%	9%
11	86	4%	9%
12	90	5%	0%
13	91	1%	-6%
14	87	3%	-9%
15	86	-3%	-5%
16	84	-3%	-10%



100%



Beam intensities from 1-20m

1m	2m	3m	4m	5m	6m	7m	8m	9m	10m	11m	12m	13m	14m	15m	16m	17m	18m	19m	20m
3.3ft	6.6ft	9.8ft	13.1ft	16.4ft	19.7ft	23ft	26.2ft	29.5ft	32.8ft	36.1ft	39.4ft	42.7ft	45.9ft	49.2ft	52.5ft	55.8ft	59.1ft	62.3ft	65.6ft
152lx	38lx	17lx	10lx	6lx	4lx	3lx	2lx	2lx	2lx	1lx	1lx	1lx	1lx	1lx	1lx	1lx	0lx	0lx	0lx
14.1fcd	3.5fcd	1.6fcd	0.9fcd	0.6fcd	0.4fcd	0.3fcd	0.2fcd	0.2fcd	0.1fcd	0.1fcd	0.1fcd	0.1fcd	0.1fcd	0.1fcd	0.1fcd	0fcd	0fcd	0fcd	0fcd

Intensities in 0° c-plane

0°	5°	10°	15°	20°	25°	30°	35°	40°	45°	50°	55°	60°	65°	70°	75°	80°	85°	90°	95°
152	151	149	146	141	136	130	123	115	106	97	87	76	64	51	38	25	13	4	1
100%	99%	98%	96%	93%	89%	86%	81%	76%	70%	64%	57%	50%	42%	33%	25%	16%	8%	3%	1%

Intensities in 90° c-plane

0°	5°	10°	15°	20°	25°	30°	35°	40°	45°	50°	55°	60°	65°	70°	75°	80°	85°	90°	95°
152	151	149	146	141	136	130	123	115	106	97	87	76	64	51	38	25	13	4	1
100%	99%	98%	96%	93%	89%	86%	81%	76%	70%	64%	57%	50%	42%	33%	25%	16%	8%	3%	1%

Intensities in 180° c-plane

0°	5°	10°	15°	20°	25°	30°	35°	40°	45°	50°	55°	60°	65°	70°	75°	80°	85°	90°	95°
152	152	151	148	144	139	133	126	117	108	98	87	76	63	51	38	25	13	4	1
100%	100%	99%	97%	95%	91%	87%	83%	77%	71%	64%	57%	50%	42%	33%	25%	16%	9%	3%	1%

Intensities in 270° c-plane

0°	5°	10°	15°	20°	25°	30°	35°	40°	45°	50°	55°	60°	65°	70°	75°	80°	85°	90°	95°
152	152	151	148	144	139	133	126	117	108	98	87	76	63	51	38	25	13	4	1
100%	100%	99%	97%	95%	91%	87%	83%	77%	71%	64%	57%	50%	42%	33%	25%	16%	9%	3%	1%

Beam angle 50%	Field angle 10%	Cutoff angle 2,5%	Intensity ratio in 120° cone	Intensity ratio in 90° cone
119.6°	167.8°	180.7°	74.1%	49.5%