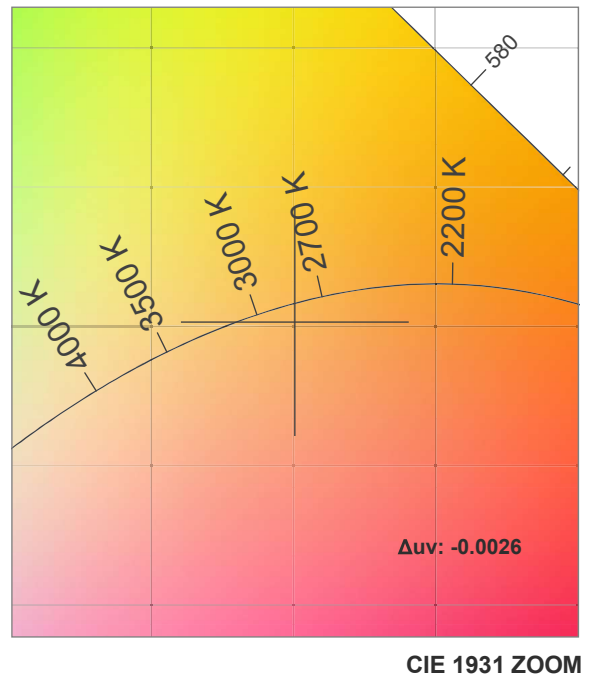
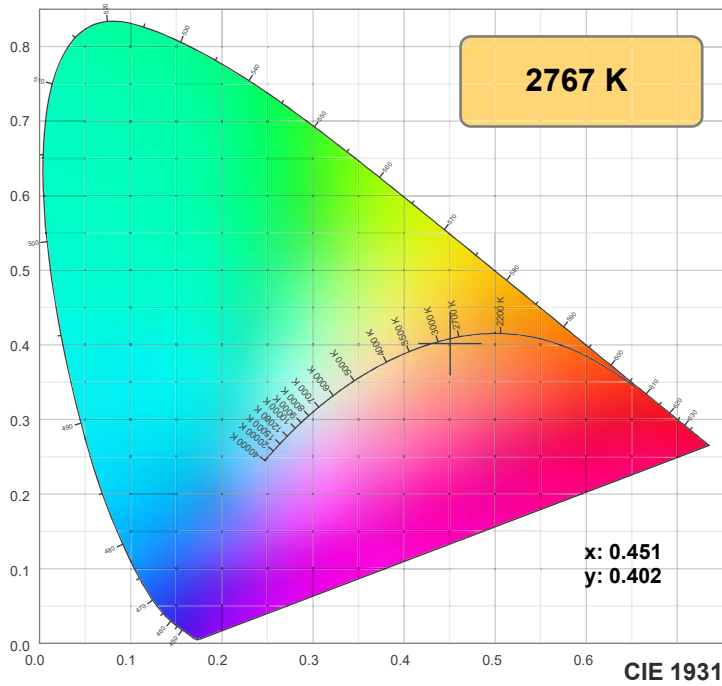
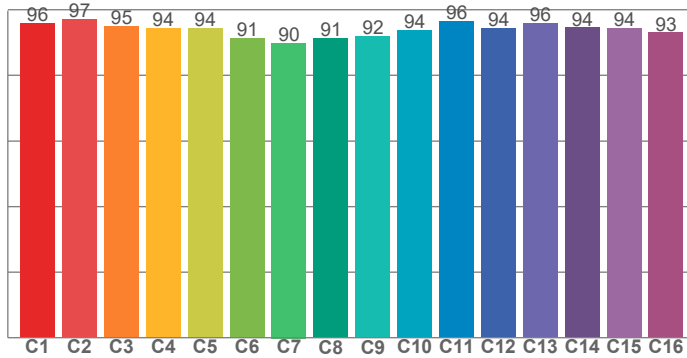


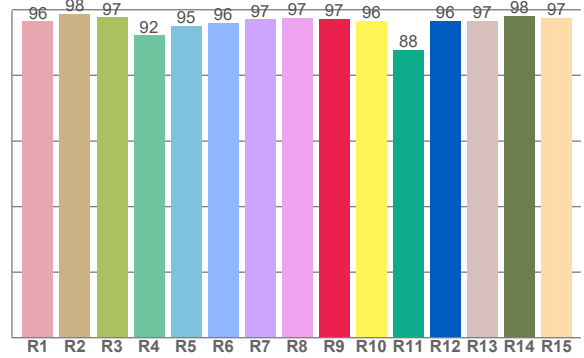
2700K



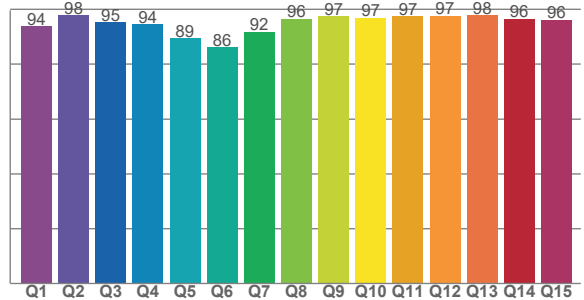
TM30: 94.2



CRI: 96.1 (R1-R8)



CQS: 93.4



CRI R values, only R1-R8 are used to calculate final CRI value

R1	R2	R3	R4	R5	R6	R7	R8	R9	R10	R11	R12	R13	R14	R15
96.2	98.4	97.5	92.1	95.0	95.9	96.8	97.2	96.9	96.4	87.5	96.4	96.5	97.9	97.3

TM30 C values, 16 binned values out of total of 99 C values

C1	C2	C3	C4	C5	C6	C7	C8	C9	C10	C11	C12	C13	C14	C15	C16
95.8	97.1	94.9	94.3	94.2	91.2	89.8	91.1	91.7	93.7	96.3	94.2	95.7	94.4	94.2	92.9

CQS Q values

Q1	Q2	Q3	Q4	Q5	Q6	Q7	Q8	Q9	Q10	Q11	Q12	Q13	Q14	Q15
93.6	97.6	95.2	94.4	89.3	86.0	91.6	96.4	97.3	96.8	97.2	97.5	97.8	96.4	96.1

Color parameters

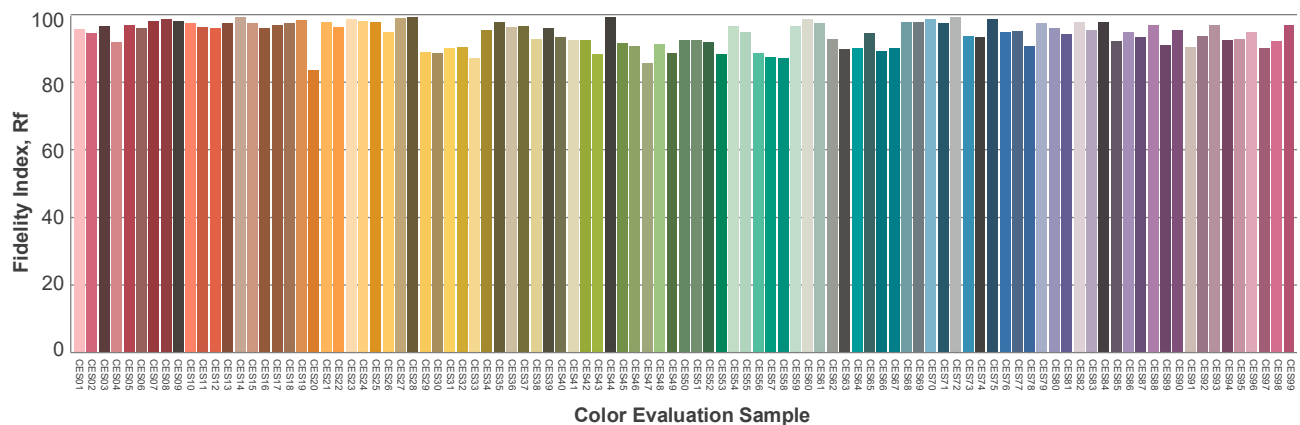
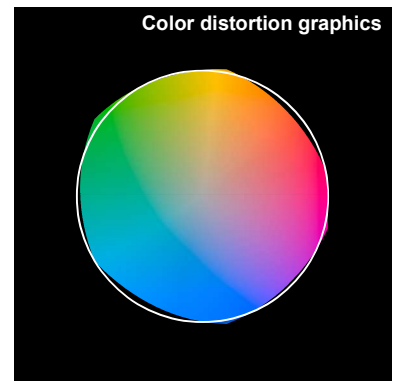
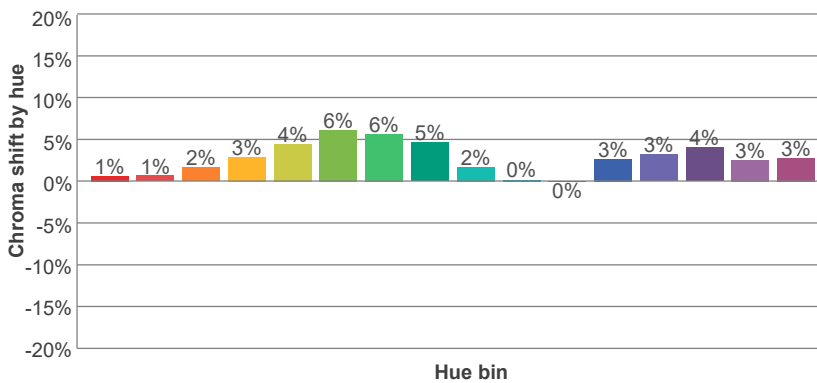
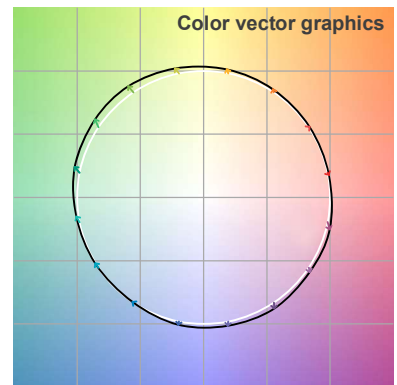
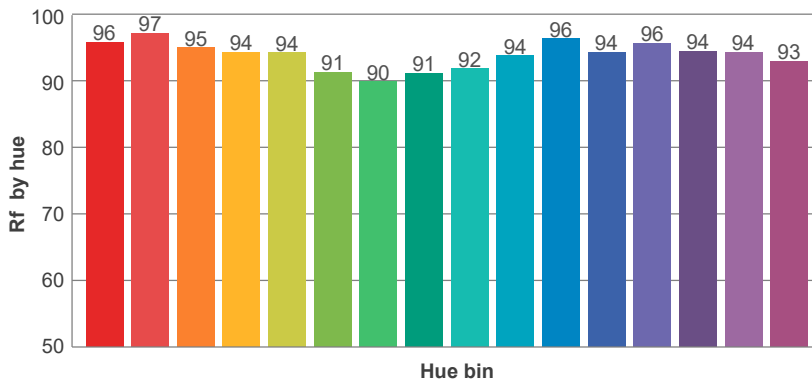
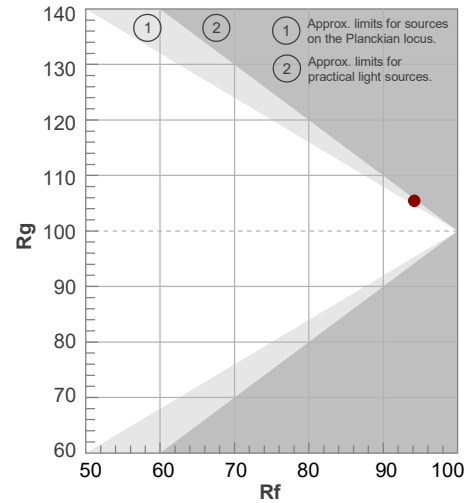
Color temperature	Color rendering index	Red component	Color fidelity	Color gamut	Color quality scale	Color coordinate cie 1931	Color coordinate cie 1931	Color coordinate	Color coordinate	Color deviation from black body
CCT	CRI	CRI R9	TM30 Rf	TM30 Rg	CQS	x	y	u	v	Δuv
2767 K	96.1	96.9	94.2	105.4	93.4	0.451	0.402	0.260	0.348	-0.0026

2700K

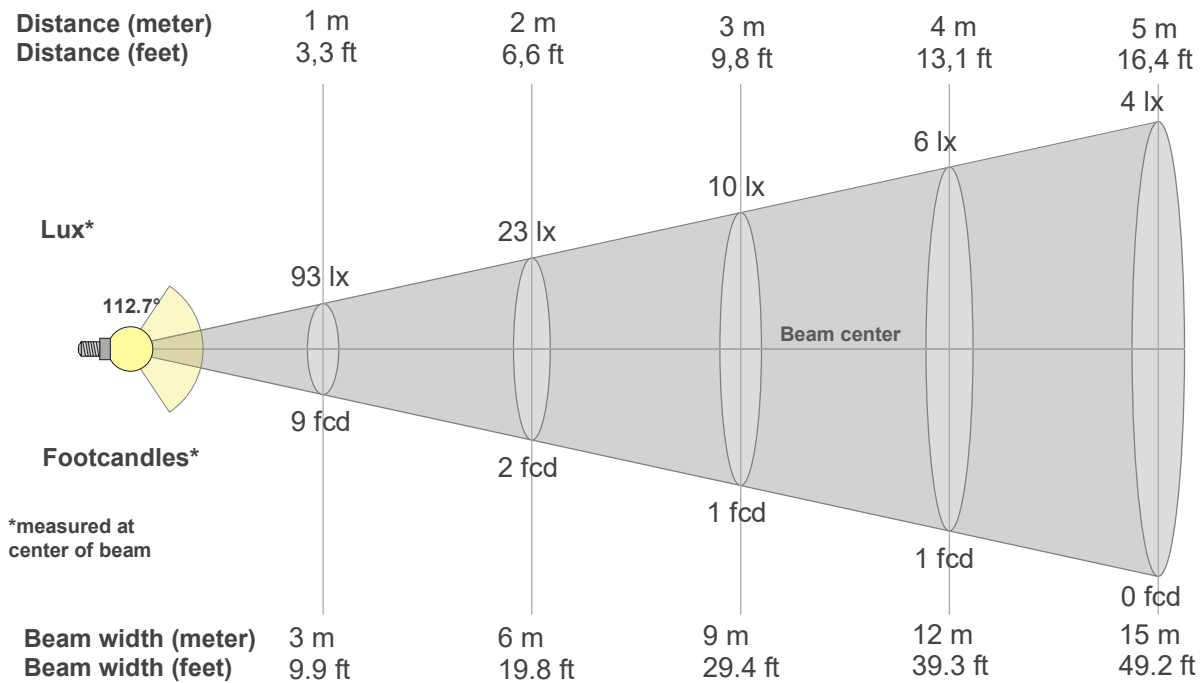
Rf 94.2
Fidelity index Rf

Rg 105.4
Gammut index Rg

Hue Bin	R _f	Graphic shifts (%)	
		Chroma	Hue
1	96	1%	-2%
2	97	1%	0%
3	95	2%	2%
4	94	3%	2%
5	94	4%	2%
6	91	6%	1%
7	90	6%	-4%
8	91	5%	-4%
9	92	2%	-5%
10	94	0%	-4%
11	96	0%	-1%
12	94	3%	0%
13	96	3%	-1%
14	94	4%	-2%
15	94	3%	-2%
16	93	3%	-5%



2700K



Beam intensities from 1-20m

1m	2m	3m	4m	5m	6m	7m	8m	9m	10m	11m	12m	13m	14m	15m	16m	17m	18m	19m	20m
3.3ft	6.6ft	9.8ft	13.1ft	16.4ft	19.7ft	23ft	26.2ft	29.5ft	32.8ft	36.1ft	39.4ft	42.7ft	45.9ft	49.2ft	52.5ft	55.8ft	59.1ft	62.3ft	65.6ft
93lx	23lx	10lx	6lx	4lx	3lx	2lx	1lx	1lx	1lx	1lx	1lx	1lx	0lx	0lx	0lx	0lx	0lx	0lx	0lx
8.6fcd	2.2fcd	1fcd	0.5fcd	0.3fcd	0.2fcd	0.2fcd	0.1fcd	0.1fcd	0.1fcd	0.1fcd	0.1fcd	0.1fcd	0fcd	0fcd	0fcd	0fcd	0fcd	0fcd	0fcd

Intensities in 0° c-plane

0°	5°	10°	15°	20°	25°	30°	35°	40°	45°	50°	55°	60°	65°	70°	75°	80°	85°	90°	95°
93.0	92.4	91.2	89.3	86.4	82.9	78.8	73.8	68.3	62.3	55.5	48.5	41.1	33.2	25.2	17.4	9.9	4.5	1.1	0.6
100%	99%	98%	96%	93%	89%	85%	79%	73%	67%	60%	52%	44%	36%	27%	19%	11%	5%	1%	1%

Intensities in 90° c-plane

0°	5°	10°	15°	20°	25°	30°	35°	40°	45°	50°	55°	60°	65°	70°	75°	80°	85°	90°	95°
93.0	92.4	91.2	89.3	86.4	82.9	78.8	73.8	68.3	62.3	55.5	48.5	41.1	33.2	25.2	17.4	9.9	4.5	1.1	0.6
100%	99%	98%	96%	93%	89%	85%	79%	73%	67%	60%	52%	44%	36%	27%	19%	11%	5%	1%	1%

Intensities in 180° c-plane

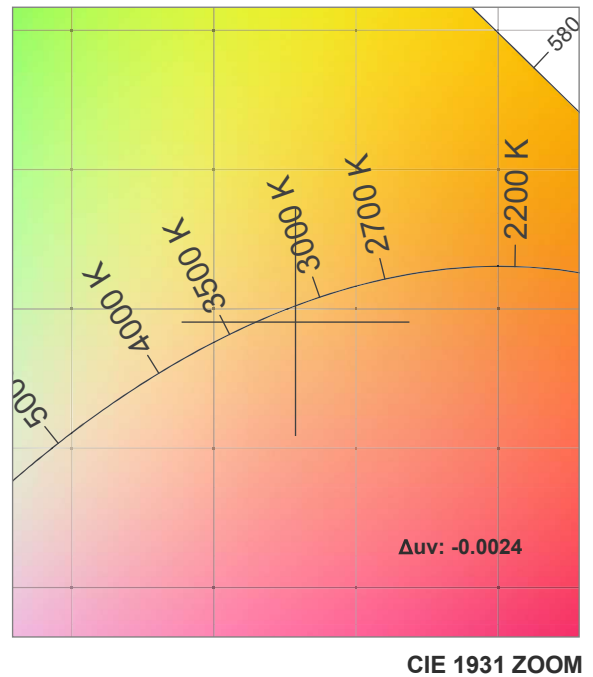
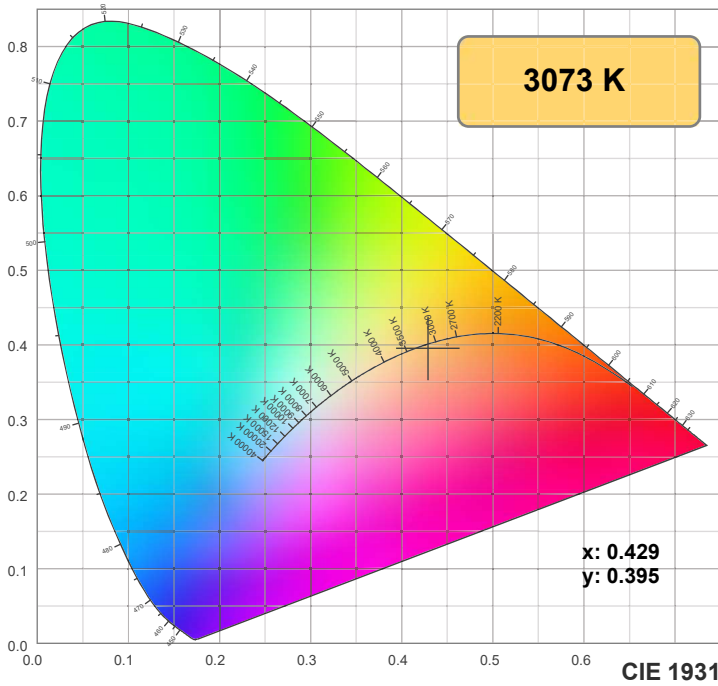
0°	5°	10°	15°	20°	25°	30°	35°	40°	45°	50°	55°	60°	65°	70°	75°	80°	85°	90°	95°
93.0	92.4	91.2	89.2	86.4	82.9	78.8	73.8	68.2	62.2	55.6	48.5	41.0	33.1	25.1	17.2	9.9	4.6	1.3	0.7
100%	99%	98%	96%	93%	89%	85%	79%	73%	67%	60%	52%	44%	36%	27%	19%	11%	5%	1%	1%

Intensities in 270° c-plane

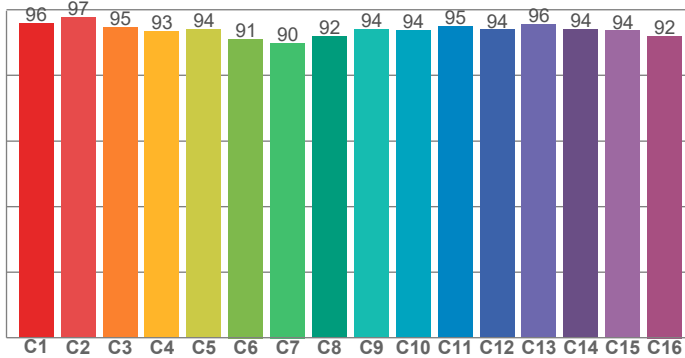
0°	5°	10°	15°	20°	25°	30°	35°	40°	45°	50°	55°	60°	65°	70°	75°	80°	85°	90°	95°
93.0	92.4	91.2	89.2	86.4	82.9	78.8	73.8	68.2	62.2	55.6	48.5	41.0	33.1	25.1	17.2	9.9	4.6	1.3	0.7
100%	99%	98%	96%	93%	89%	85%	79%	73%	67%	60%	52%	44%	36%	27%	19%	11%	5%	1%	1%

Beam angle 50%	Field angle 10%	Cutoff angle 2,5%	Intensity ratio in 120° cone	Intensity ratio in 90° cone
112.7°	160.8°	174.6°	77.3%	52.6%

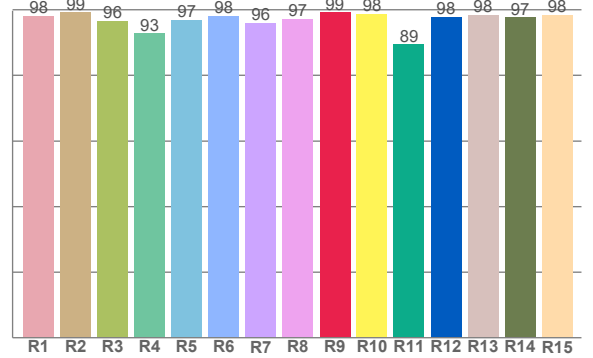
3000K



TM30: 94.0



CRI: 96.7 (R1-R8)



CRI R values, only R1-R8 are used to calculate final CRI value

R1	R2	R3	R4	R5	R6	R7	R8	R9	R10	R11	R12	R13	R14	R15
97.9	99.0	96.3	92.6	96.6	98.0	95.9	97.0	99.0	98.5	89.3	97.7	98.4	97.5	98.3

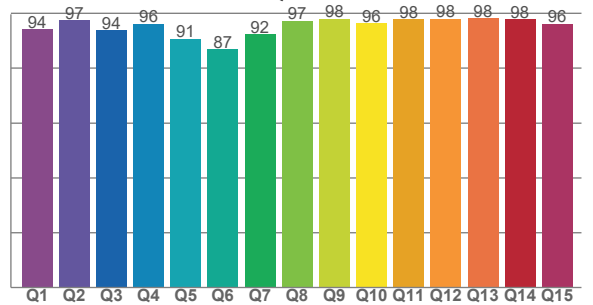
TM30 C values, 16 binned values out of total of 99 C values

C1	C2	C3	C4	C5	C6	C7	C8	C9	C10	C11	C12	C13	C14	C15	C16
95.8	97.5	94.7	93.4	93.9	91.1	89.8	91.8	94.0	93.7	94.9	93.8	95.6	94.0	93.5	92.0

CQS Q values

Q1	Q2	Q3	Q4	Q5	Q6	Q7	Q8	Q9	Q10	Q11	Q12	Q13	Q14	Q15
94.0	97.4	93.6	96.1	90.6	86.9	92.1	97.1	97.8	96.2	97.8	97.9	98.0	97.8	96.0

CQS: 94.0



Color parameters

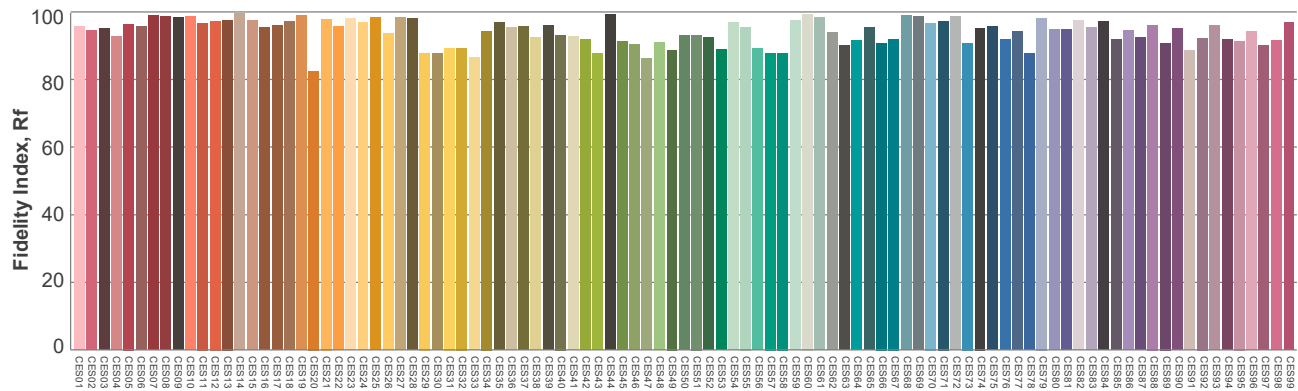
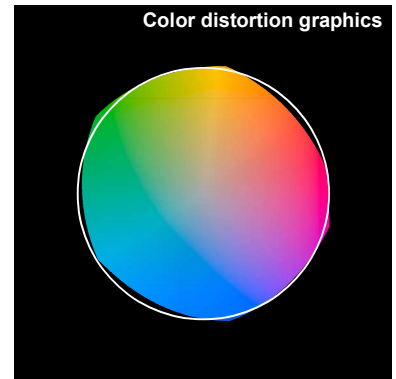
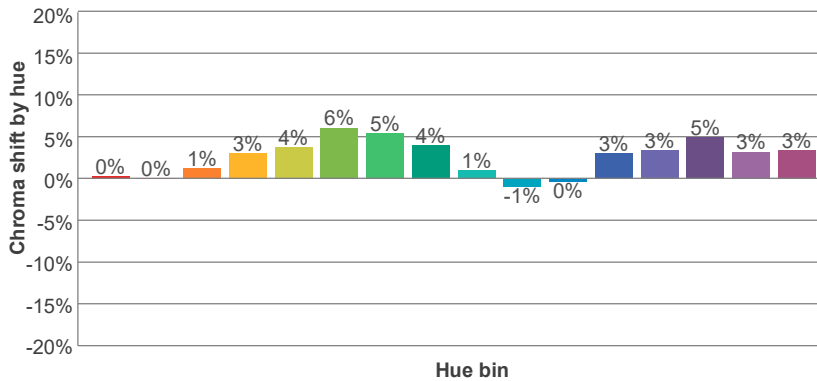
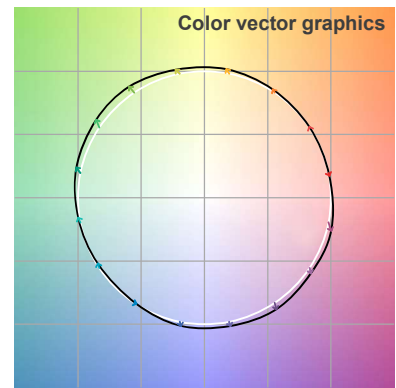
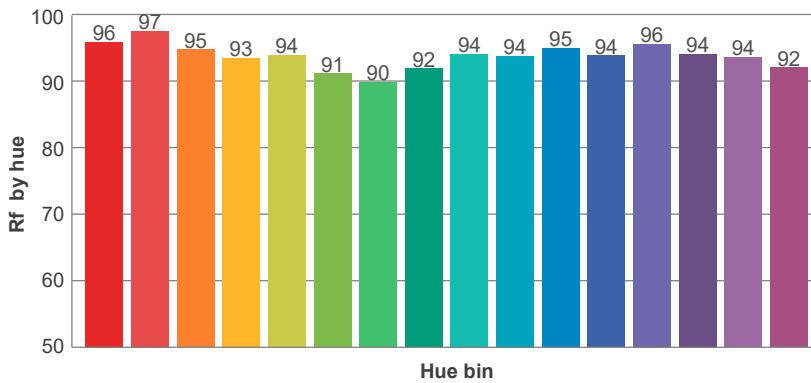
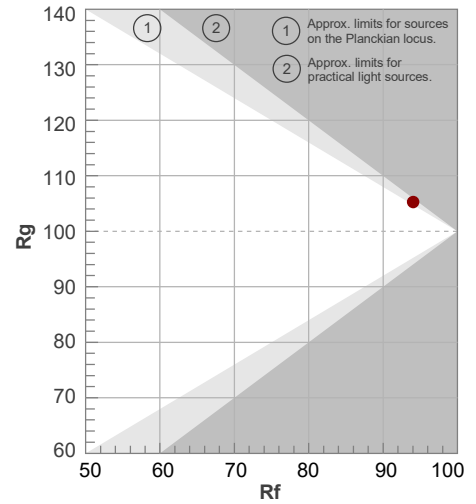
Color temperature	Color rendering index	Red component	Color fidelity	Color gamut	Color quality scale	Color coordinate cie 1931	Color coordinate cie 1931	Color coordinate	Color coordinate	Color deviation from black body
CCT	CRI	CRI R9	TM30 Rf	TM30 Rg	CQS	x	y	u	v	Δuv
3073 K	96.7	99.0	94.0	105.3	94.0	0.429	0.395	0.249	0.344	-0.0024

3000K

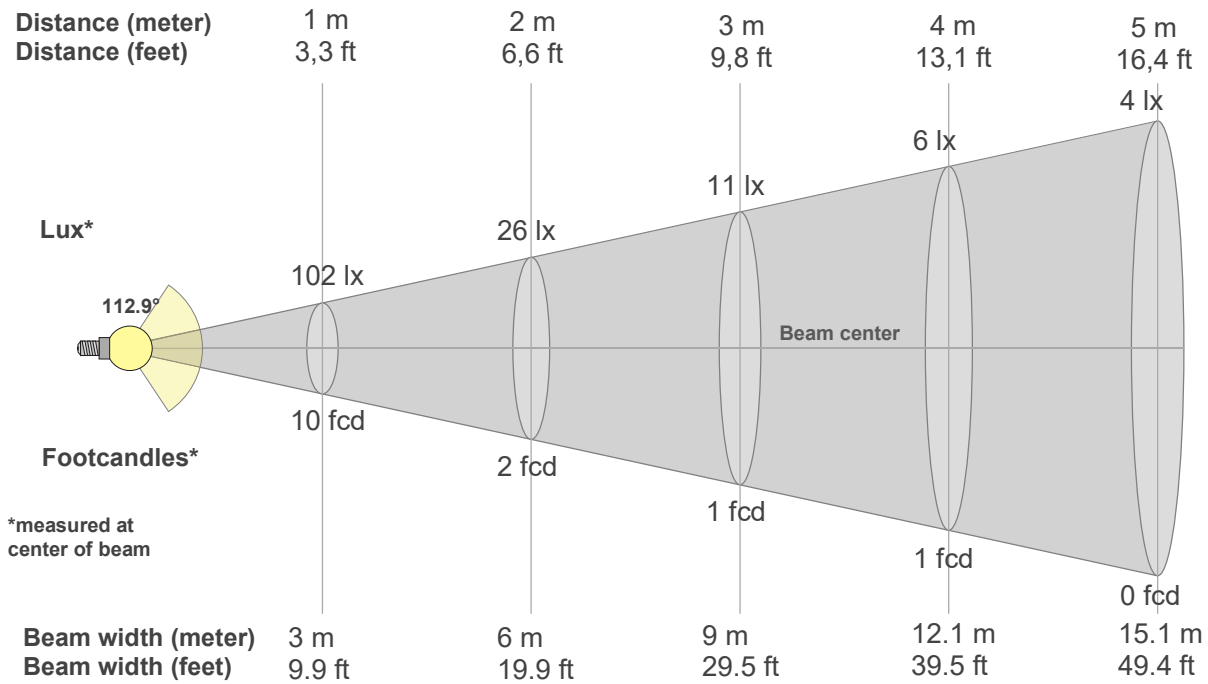
Rf 94.0
Fidelity index Rf

Rg 105.3
Gammut index Rg

		Graphic shifts (%)	
Hue Bin	R _f	Chroma	Hue
1	96	0%	-2%
2	97	0%	0%
3	95	1%	3%
4	93	3%	3%
5	94	4%	3%
6	91	6%	1%
7	90	5%	-4%
8	92	4%	-4%
9	94	1%	-4%
10	94	-1%	-3%
11	95	0%	2%
12	94	3%	2%
13	96	3%	0%
14	94	5%	-2%
15	94	3%	-3%
16	92	3%	-6%



3000K



Beam intensities from 1-20m

1m	2m	3m	4m	5m	6m	7m	8m	9m	10m	11m	12m	13m	14m	15m	16m	17m	18m	19m	20m
3.3ft	6.6ft	9.8ft	13.1ft	16.4ft	19.7ft	23ft	26.2ft	29.5ft	32.8ft	36.1ft	39.4ft	42.7ft	45.9ft	49.2ft	52.5ft	55.8ft	59.1ft	62.3ft	65.6ft
102lx	26lx	11lx	6lx	4lx	3lx	2lx	2lx	1lx	1lx	1lx	1lx	1lx	1lx	0lx	0lx	0lx	0lx	0lx	0lx
9.5fcd	2.4fcd	1.1fcd	0.6fcd	0.4fcd	0.3fcd	0.2fcd	0.1fcd	0.1fcd	0.1fcd	0.1fcd	0.1fcd	0.1fcd	0fcd	0fcd	0fcd	0fcd	0fcd	0fcd	0fcd

Intensities in 0° c-plane

0°	5°	10°	15°	20°	25°	30°	35°	40°	45°	50°	55°	60°	65°	70°	75°	80°	85°	90°	95°
102	102	100	98	95	91	87	82	75	69	62	54	45	37	28	19	11	5	2	1
100%	100%	98%	96%	93%	89%	85%	80%	74%	67%	60%	52%	44%	36%	27%	19%	11%	5%	2%	1%

Intensities in 90° c-plane

0°	5°	10°	15°	20°	25°	30°	35°	40°	45°	50°	55°	60°	65°	70°	75°	80°	85°	90°	95°
102	102	100	98	95	91	87	82	75	69	62	54	45	37	28	19	11	5	2	1
100%	100%	98%	96%	93%	89%	85%	80%	74%	67%	60%	52%	44%	36%	27%	19%	11%	5%	2%	1%

Intensities in 180° c-plane

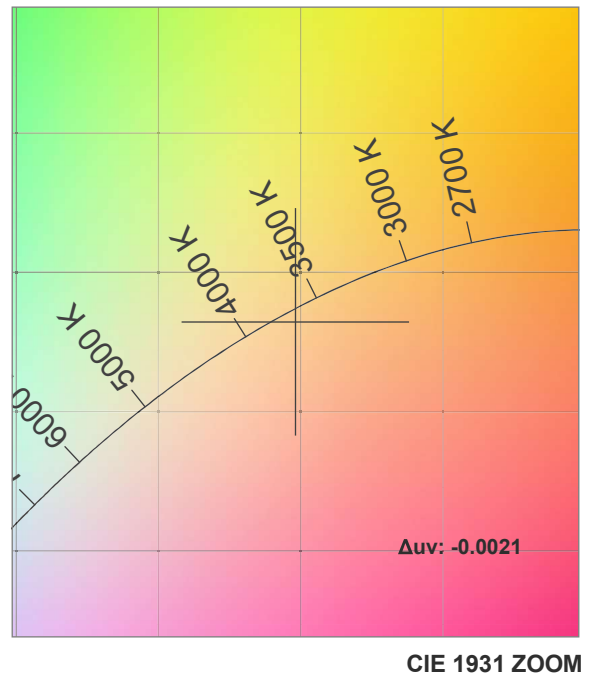
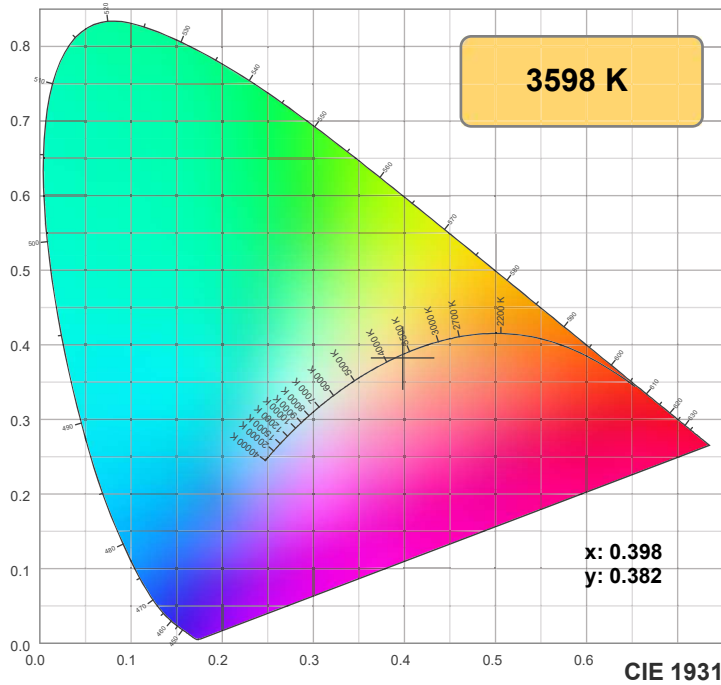
0°	5°	10°	15°	20°	25°	30°	35°	40°	45°	50°	55°	60°	65°	70°	75°	80°	85°	90°	95°
102	102	100	98	95	91	87	81	75	69	61	54	45	37	28	19	11	6	1	1
100%	99%	98%	96%	93%	89%	85%	80%	74%	67%	60%	52%	44%	36%	27%	19%	11%	5%	1%	1%

Intensities in 270° c-plane

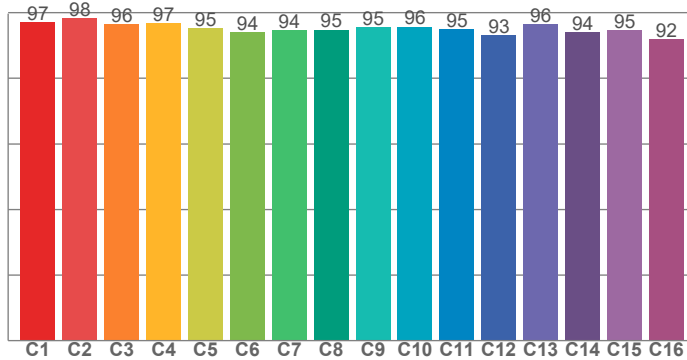
0°	5°	10°	15°	20°	25°	30°	35°	40°	45°	50°	55°	60°	65°	70°	75°	80°	85°	90°	95°
102	102	100	98	95	91	87	81	75	69	61	54	45	37	28	19	11	6	1	1
100%	99%	98%	96%	93%	89%	85%	80%	74%	67%	60%	52%	44%	36%	27%	19%	11%	5%	1%	1%

Beam angle 50%	Field angle 10%	Cutoff angle 2,5%	Intensity ratio in 120° cone	Intensity ratio in 90° cone
112.9°	161.3°	175.1°	77.2%	52.4%

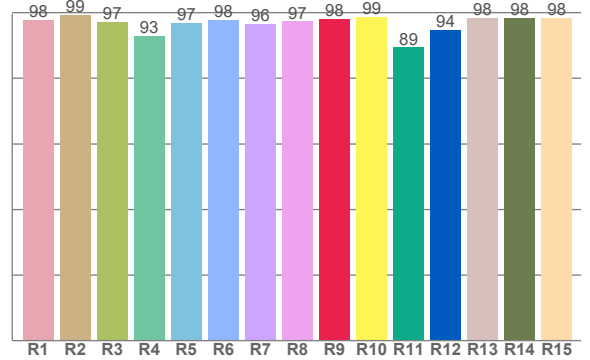
3500K



TM30: 95.3



CRI: 96.9 (R1-R8)



CRI R values, only R1-R8 are used to calculate final CRI value

R1	R2	R3	R4	R5	R6	R7	R8	R9	R10	R11	R12	R13	R14	R15
97.7	99.2	97.1	92.8	96.7	97.7	96.4	97.2	98.0	98.5	89.3	94.5	98.3	98.2	98.4

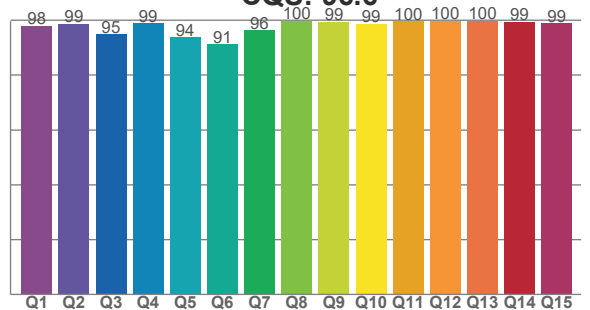
TM30 C values, 16 binned values out of total of 99 C values

C1	C2	C3	C4	C5	C6	C7	C8	C9	C10	C11	C12	C13	C14	C15	C16
96.9	98.2	96.4	96.7	95.0	93.8	94.4	94.7	95.4	95.6	94.9	93.0	96.5	94.0	94.6	91.8

CQS Q values

Q1	Q2	Q3	Q4	Q5	Q6	Q7	Q8	Q9	Q10	Q11	Q12	Q13	Q14	Q15
97.9	98.7	94.7	98.9	93.6	91.0	96.3	99.8	99.3	98.7	99.5	99.8	99.8	99.3	98.9

CQS: 96.6



Color parameters

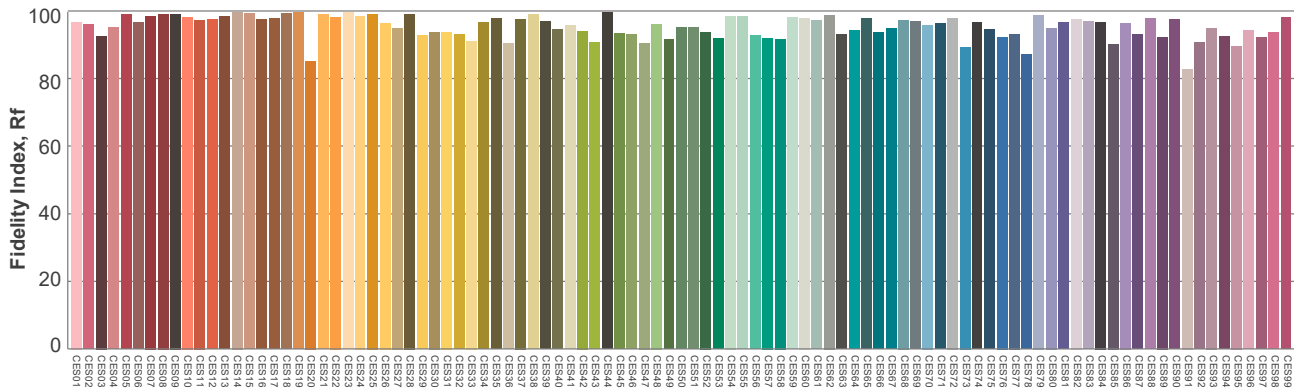
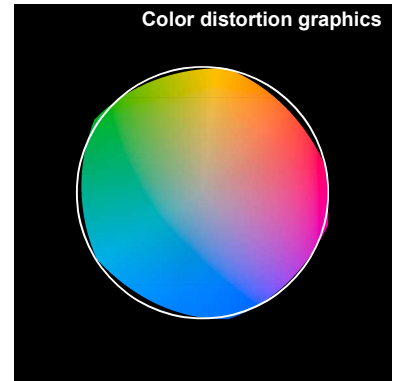
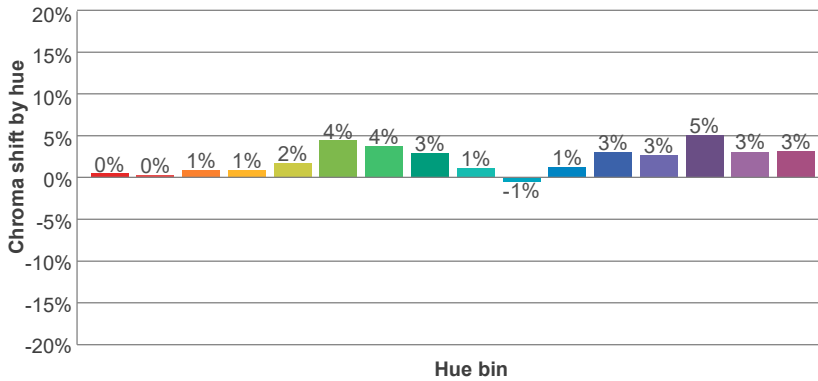
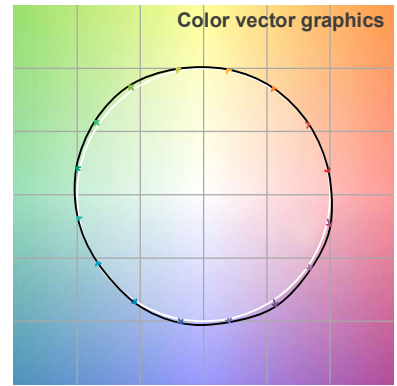
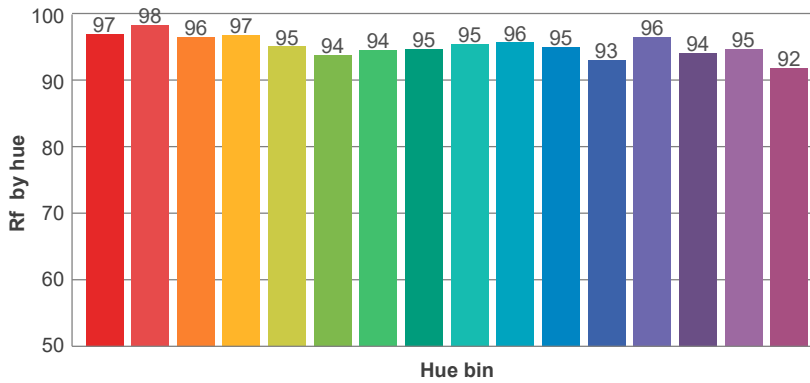
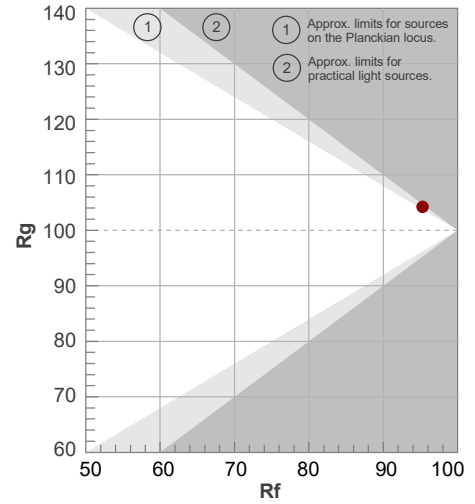
Color temperature	Color rendering index	Red component	Color fidelity	Color gamut	Color quality scale	Color coordinate cie 1931	Color coordinate cie 1931	Color coordinate	Color coordinate	Color deviation from black body
CCT	CRI	CRI R9	TM30 Rf	TM30 Rg	CQS	x	y	u	v	Δuv
3598 K	96.9	98.0	95.3	104.2	96.6	0.398	0.382	0.235	0.338	-0.0021

3500K

Rf 95.3
Fidelity index Rf

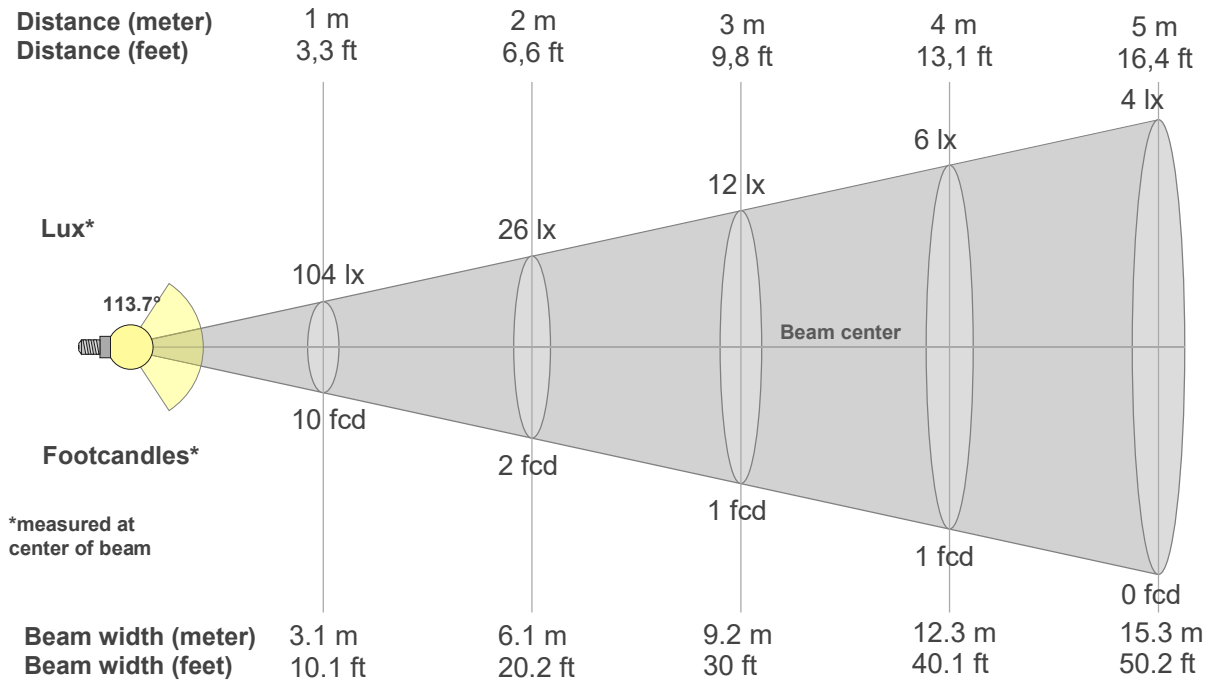
Rg 104.2
Gamut index Rg

Hue Bin	R _f	Graphic shifts (%)	
		Chroma	Hue
1	97	0%	-2%
2	98	0%	0%
3	96	1%	2%
4	97	1%	1%
5	95	2%	2%
6	94	4%	1%
7	94	4%	-1%
8	95	3%	-1%
9	95	1%	-2%
10	96	-1%	-3%
11	95	1%	3%
12	93	3%	3%
13	96	3%	0%
14	94	5%	-1%
15	95	3%	-2%
16	92	3%	-5%



Color Evaluation Sample

3500K



Beam intensities from 1-20m

1m	2m	3m	4m	5m	6m	7m	8m	9m	10m	11m	12m	13m	14m	15m	16m	17m	18m	19m	20m
3.3ft	6.6ft	9.8ft	13.1ft	16.4ft	19.7ft	23ft	26.2ft	29.5ft	32.8ft	36.1ft	39.4ft	42.7ft	45.9ft	49.2ft	52.5ft	55.8ft	59.1ft	62.3ft	65.6ft
104lx	26lx	12lx	6lx	4lx	3lx	2lx	2lx	1lx	1lx	1lx	1lx	1lx	1lx	0lx	0lx	0lx	0lx	0lx	0lx
9.6fcd	2.4fcd	1.1fcd	0.6fcd	0.4fcd	0.3fcd	0.2fcd	0.2fcd	0.1fcd	0.1fcd	0.1fcd	0.1fcd	0.1fcd	0fcd	0fcd	0fcd	0fcd	0fcd	0fcd	0fcd

Intensities in 0° c-plane

0°	5°	10°	15°	20°	25°	30°	35°	40°	45°	50°	55°	60°	65°	70°	75°	80°	85°	90°	95°
104	103	102	100	97	93	89	83	77	71	63	55	47	38	29	19	11	5	1	1
100%	100%	99%	96%	93%	90%	85%	80%	74%	68%	61%	53%	45%	36%	28%	19%	11%	5%	1%	1%

Intensities in 90° c-plane

0°	5°	10°	15°	20°	25°	30°	35°	40°	45°	50°	55°	60°	65°	70°	75°	80°	85°	90°	95°
104	103	102	100	97	93	89	83	77	71	63	55	47	38	29	19	11	5	1	1
100%	100%	99%	96%	93%	90%	85%	80%	74%	68%	61%	53%	45%	36%	28%	19%	11%	5%	1%	1%

Intensities in 180° c-plane

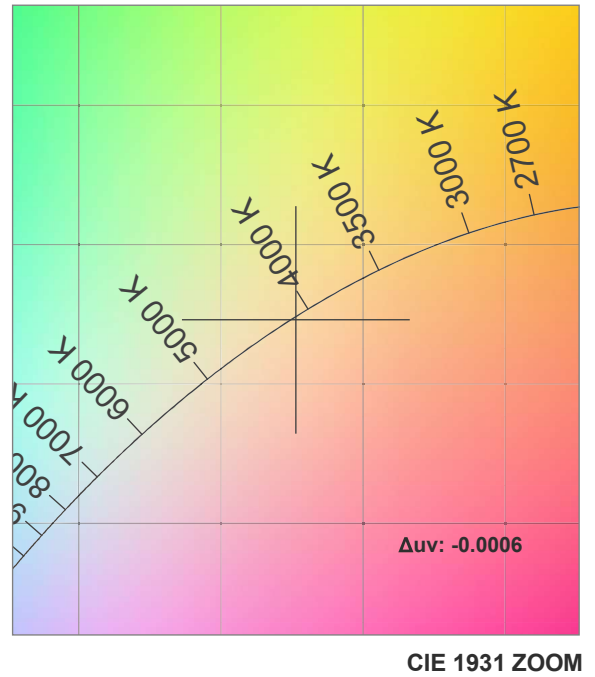
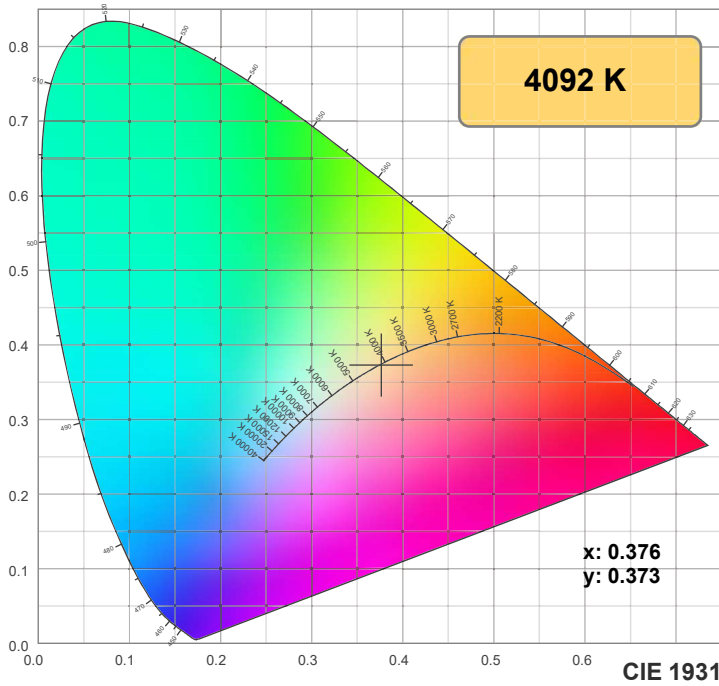
0°	5°	10°	15°	20°	25°	30°	35°	40°	45°	50°	55°	60°	65°	70°	75°	80°	85°	90°	95°
104	104	102	100	97	93	88	83	77	70	63	55	47	38	29	21	13	5	2	1
100%	100%	98%	96%	93%	89%	85%	80%	74%	67%	61%	53%	45%	37%	28%	20%	12%	5%	2%	1%

Intensities in 270° c-plane

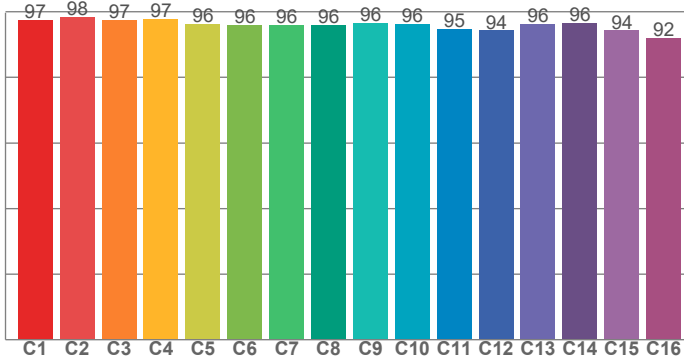
0°	5°	10°	15°	20°	25°	30°	35°	40°	45°	50°	55°	60°	65°	70°	75°	80°	85°	90°	95°
104	104	102	100	97	93	88	83	77	70	63	55	47	38	29	21	13	5	2	1
100%	100%	98%	96%	93%	89%	85%	80%	74%	67%	61%	53%	45%	37%	28%	20%	12%	5%	2%	1%

Beam angle 50%	Field angle 10%	Cutoff angle 2,5%	Intensity ratio in 120° cone	Intensity ratio in 90° cone
113.7°	162.1°	177.4°	77.0%	52.2%

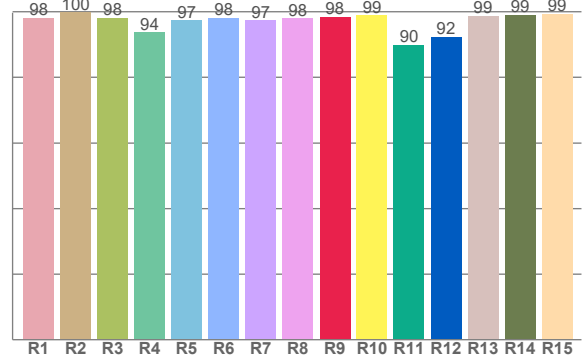
4200K



TM30: 95.9



CRI: 97.4 (R1-R8)



CRI R values, only R1-R8 are used to calculate final CRI value

R1	R2	R3	R4	R5	R6	R7	R8	R9	R10	R11	R12	R13	R14	R15
98.0	99.6	97.9	93.6	97.1	98.0	97.1	97.8	98.3	98.7	89.7	92.2	98.6	98.7	99.1

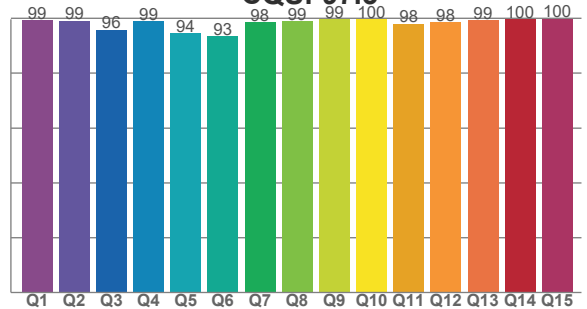
TM30 C values, 16 binned values out of total of 99 C values

C1	C2	C3	C4	C5	C6	C7	C8	C9	C10	C11	C12	C13	C14	C15	C16
97.2	98.2	97.3	97.5	96.1	95.7	95.8	95.8	96.4	96.1	94.7	94.1	96.1	96.3	94.1	91.8

CQS Q values

Q1	Q2	Q3	Q4	Q5	Q6	Q7	Q8	Q9	Q10	Q11	Q12	Q13	Q14	Q15
99.2	99.1	95.7	98.9	94.3	93.2	98.5	98.7	99.5	99.6	97.9	98.3	99.2	99.5	99.7

CQS: 97.3



Color parameters

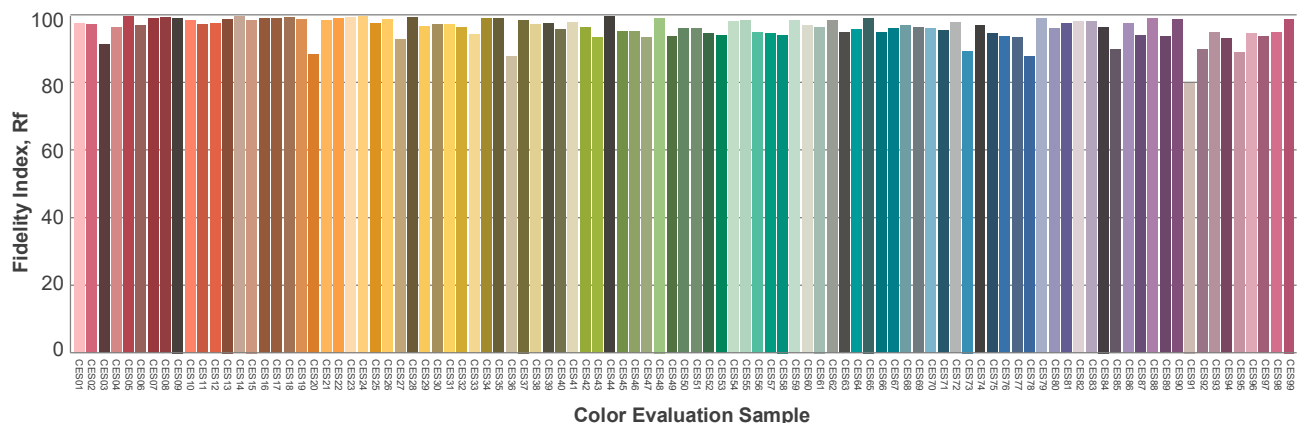
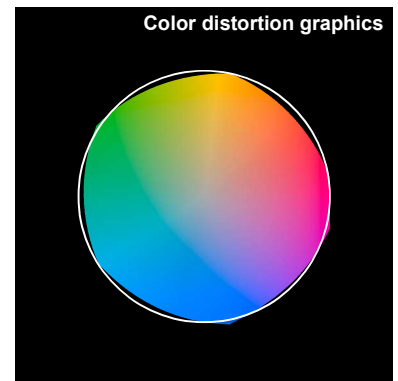
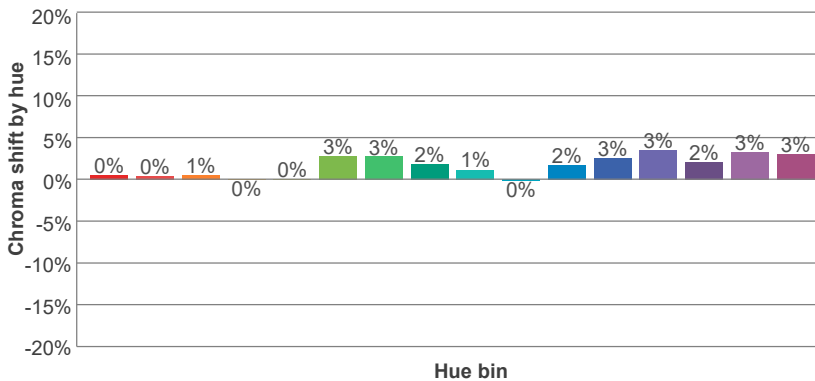
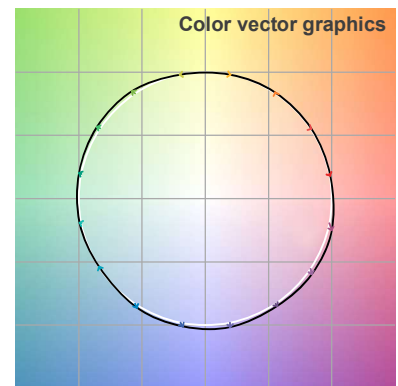
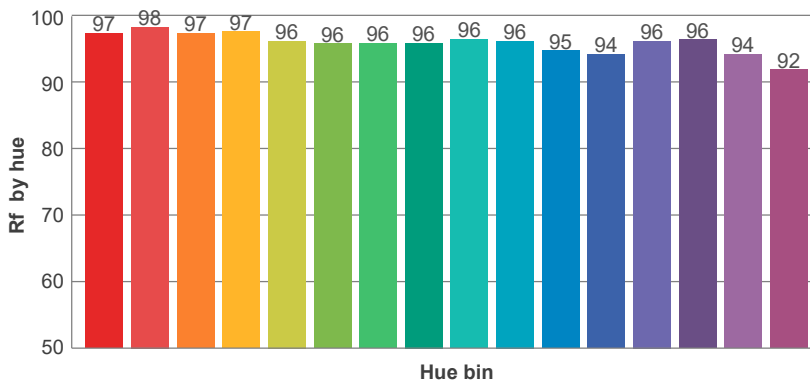
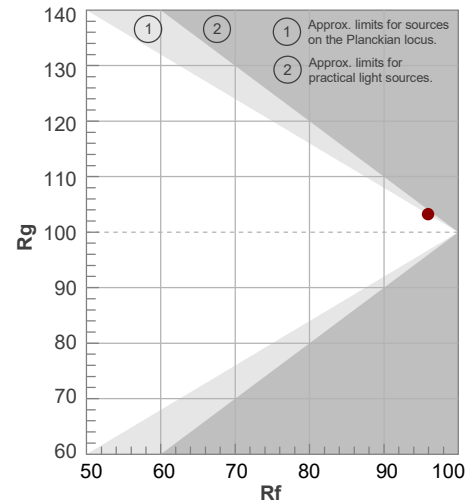
Color temperature	Color rendering index	Red component	Color fidelity	Color gamut	Color quality scale	Color coordinate cie 1931	Color coordinate cie 1931	Color coordinate	Color coordinate	Color deviation from black body
CCT	CRI	CRI R9	TM30 Rf	TM30 Rg	CQS	x	y	u	v	Δuv
4092 K	97.4	98.3	95.9	103.2	97.3	0.376	0.373	0.224	0.333	-0.0006

4200K

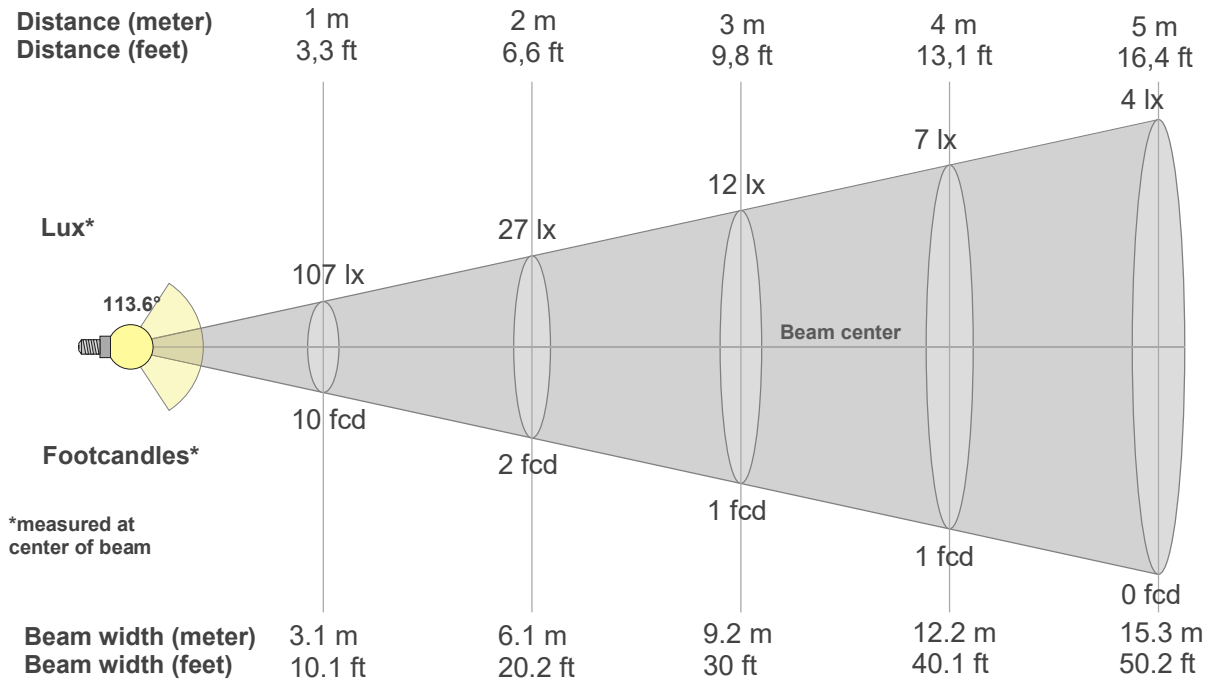
Rf 95.9
Fidelity index Rf

Rg 103.2
Gammut index Rg

Hue Bin	R _f	Graphic shifts (%)	
		Chroma	Hue
1	97	0%	-1%
2	98	0%	-1%
3	97	1%	1%
4	97	0%	0%
5	96	0%	1%
6	96	3%	1%
7	96	3%	0%
8	96	2%	0%
9	96	1%	-1%
10	96	0%	-2%
11	95	2%	3%
12	94	3%	2%
13	96	3%	0%
14	96	2%	0%
15	94	3%	-3%
16	92	3%	-5%



4200K



Beam intensities from 1-20m

1m	2m	3m	4m	5m	6m	7m	8m	9m	10m	11m	12m	13m	14m	15m	16m	17m	18m	19m	20m
3.3ft	6.6ft	9.8ft	13.1ft	16.4ft	19.7ft	23ft	26.2ft	29.5ft	32.8ft	36.1ft	39.4ft	42.7ft	45.9ft	49.2ft	52.5ft	55.8ft	59.1ft	62.3ft	65.6ft
107lx	27lx	12lx	7lx	4lx	3lx	2lx	2lx	1lx	1lx	1lx	1lx	1lx	1lx	0lx	0lx	0lx	0lx	0lx	0lx
9.9fcd	2.5fcd	1.1fcd	0.6fcd	0.4fcd	0.3fcd	0.2fcd	0.2fcd	0.1fcd	0.1fcd	0.1fcd	0.1fcd	0.1fcd	0.1fcd	0fcd	0fcd	0fcd	0fcd	0fcd	0fcd

Intensities in 0° c-plane

0°	5°	10°	15°	20°	25°	30°	35°	40°	45°	50°	55°	60°	65°	70°	75°	80°	85°	90°	95°
107	107	105	103	100	96	91	86	80	73	65	57	48	39	30	20	12	5	1	1
100%	100%	98%	96%	93%	90%	85%	80%	74%	68%	61%	53%	45%	36%	28%	19%	11%	5%	1%	1%

Intensities in 90° c-plane

0°	5°	10°	15°	20°	25°	30°	35°	40°	45°	50°	55°	60°	65°	70°	75°	80°	85°	90°	95°
107	107	105	103	100	96	91	86	80	73	65	57	48	39	30	20	12	5	1	1
100%	100%	98%	96%	93%	90%	85%	80%	74%	68%	61%	53%	45%	36%	28%	19%	11%	5%	1%	1%

Intensities in 180° c-plane

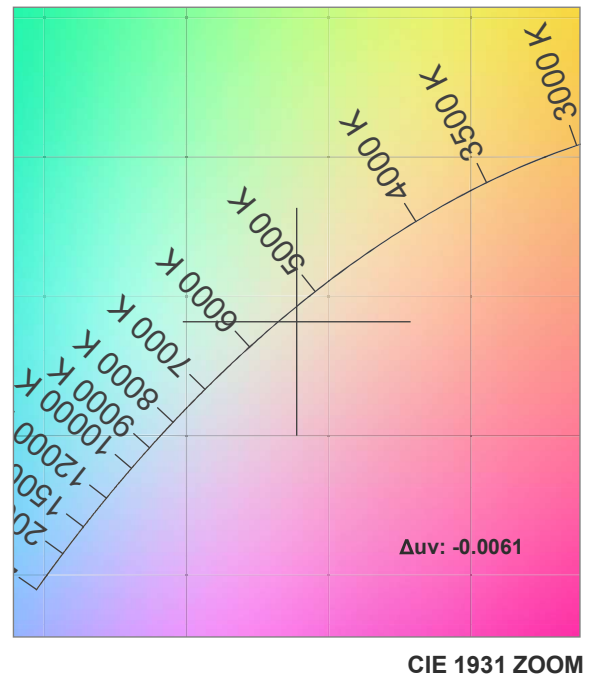
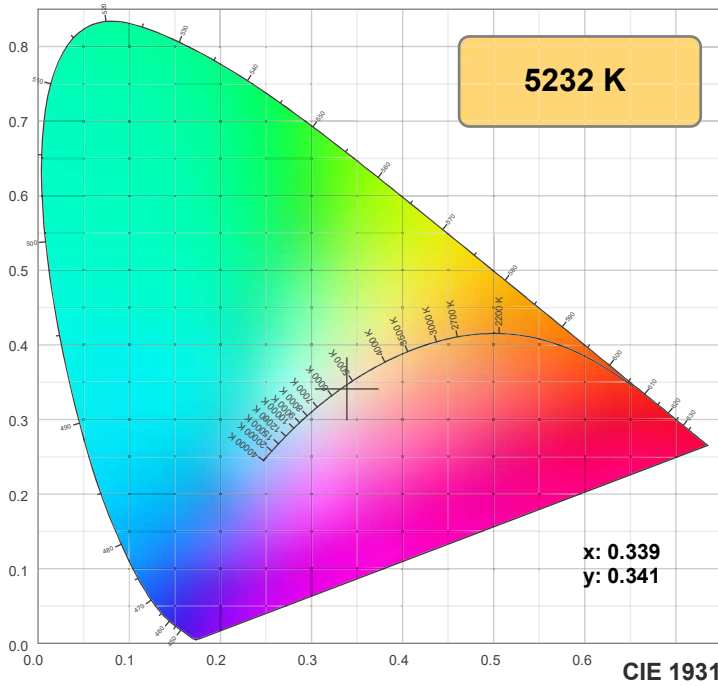
0°	5°	10°	15°	20°	25°	30°	35°	40°	45°	50°	55°	60°	65°	70°	75°	80°	85°	90°	95°
107	107	105	103	100	96	91	86	79	72	65	57	48	39	30	21	12	5	2	1
100%	100%	98%	96%	93%	89%	85%	80%	74%	67%	61%	53%	45%	36%	28%	19%	12%	5%	2%	1%

Intensities in 270° c-plane

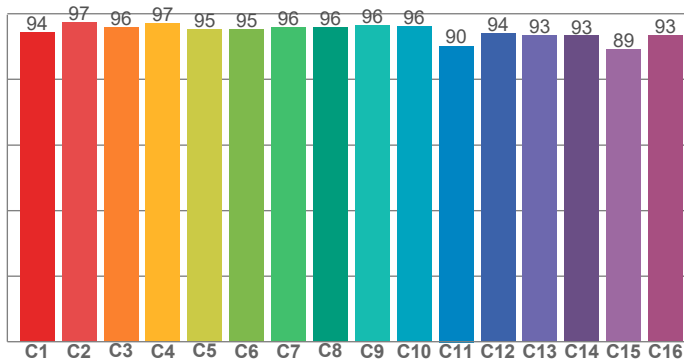
0°	5°	10°	15°	20°	25°	30°	35°	40°	45°	50°	55°	60°	65°	70°	75°	80°	85°	90°	95°
107	107	105	103	100	96	91	86	79	72	65	57	48	39	30	21	12	5	2	1
100%	100%	98%	96%	93%	89%	85%	80%	74%	67%	61%	53%	45%	36%	28%	19%	12%	5%	2%	1%

Beam angle 50%	Field angle 10%	Cutoff angle 2,5%	Intensity ratio in 120° cone	Intensity ratio in 90° cone
113.6°	161.8°	176.8°	77.1%	52.2%

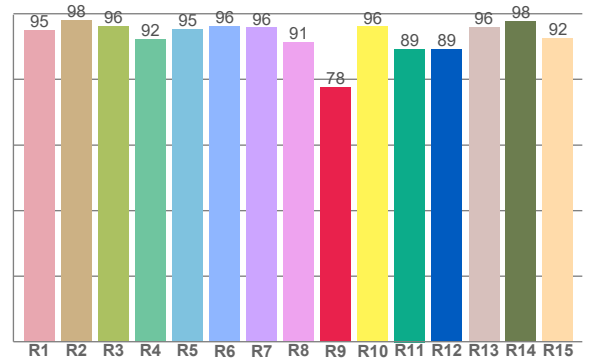
5000K



TM30: 94.6



CRI: 94.9 (R1-R8)



CRI R values, only R1-R8 are used to calculate final CRI value

R1	R2	R3	R4	R5	R6	R7	R8	R9	R10	R11	R12	R13	R14	R15
95.0	97.9	96.0	92.1	95.3	96.1	95.7	91.2	77.6	96.0	89.2	89.1	95.8	97.7	92.4

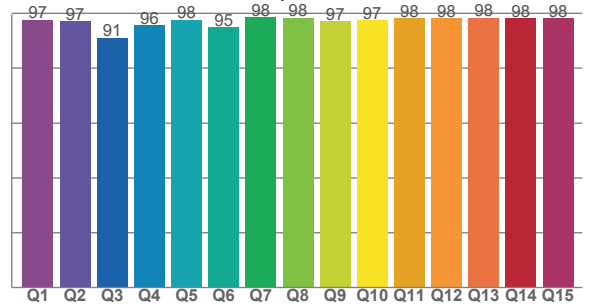
TM30 C values, 16 binned values out of total of 99 C values

C1	C2	C3	C4	C5	C6	C7	C8	C9	C10	C11	C12	C13	C14	C15	C16
94.3	97.3	95.8	96.9	95.1	95.2	95.9	95.9	96.3	96.2	90.1	94.0	93.4	93.2	89.1	93.4

CQS Q values

Q1	Q2	Q3	Q4	Q5	Q6	Q7	Q8	Q9	Q10	Q11	Q12	Q13	Q14	Q15
97.5	97.0	90.9	95.6	97.5	94.8	98.5	98.3	96.9	97.3	98.0	98.0	98.3	98.1	98.1

CQS: 96.4



Color parameters

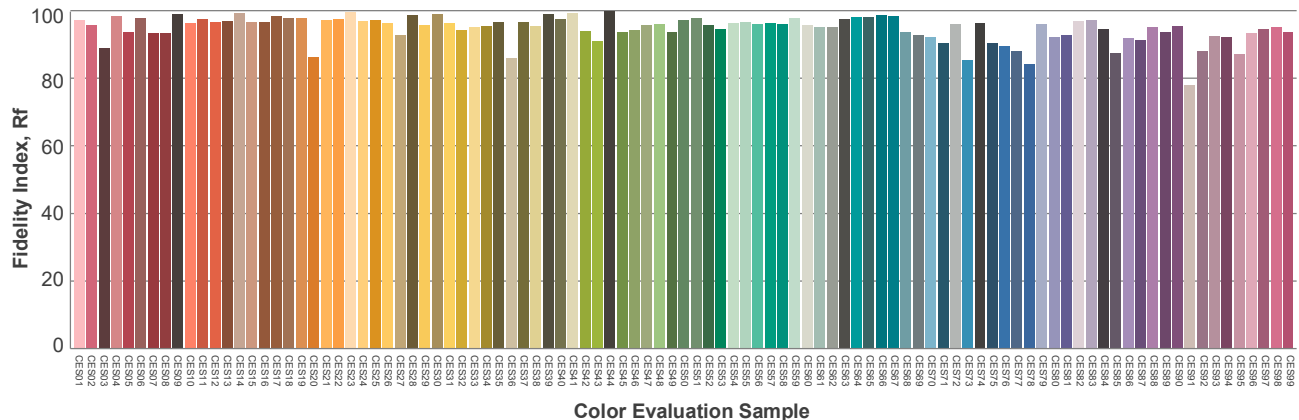
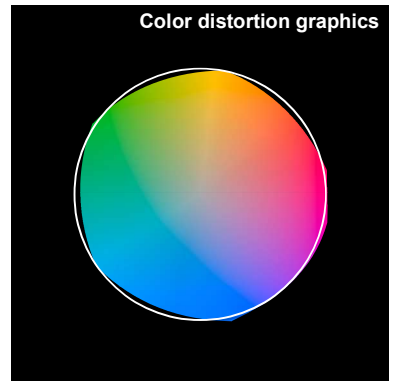
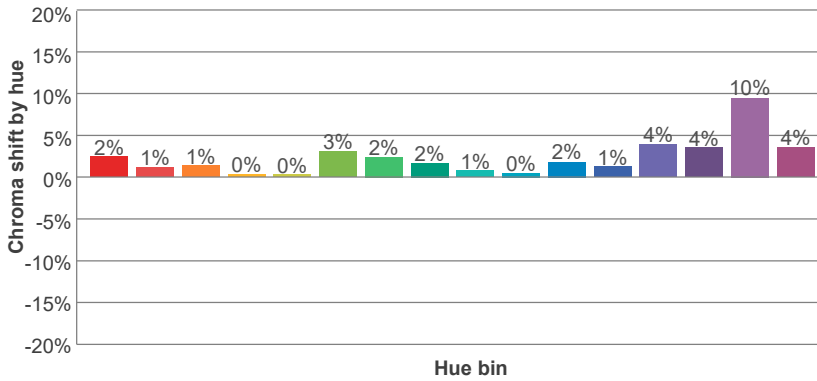
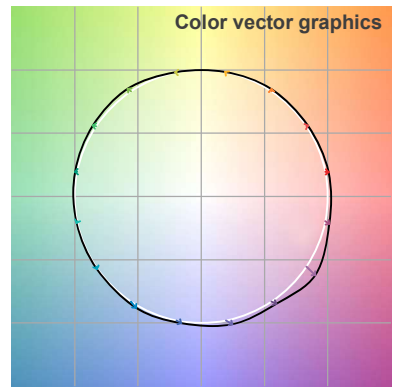
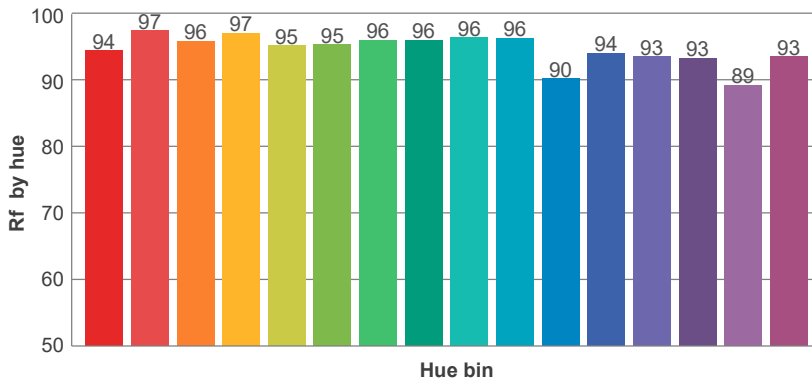
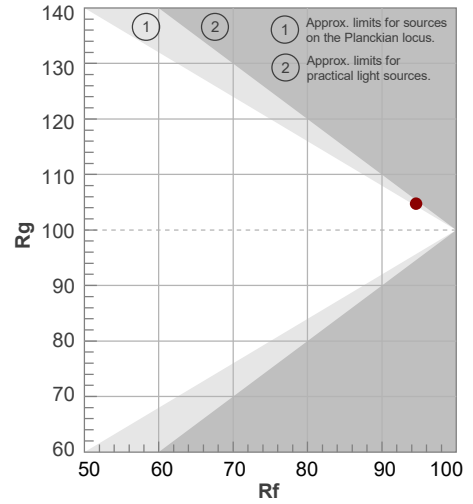
Color temperature	Color rendering index	Red component	Color fidelity	Color gamut	Color quality scale	Color coordinate cie 1931	Color coordinate cie 1931	Color coordinate	Color coordinate	Color deviation from black body
CCT	CRI	CRI R9	TM30 Rf	TM30 Rg	CQS	x	y	u	v	Δuv
5232 K	94.9	77.6	94.6	104.7	96.4	0.339	0.341	0.211	0.319	-0.0061

5000K

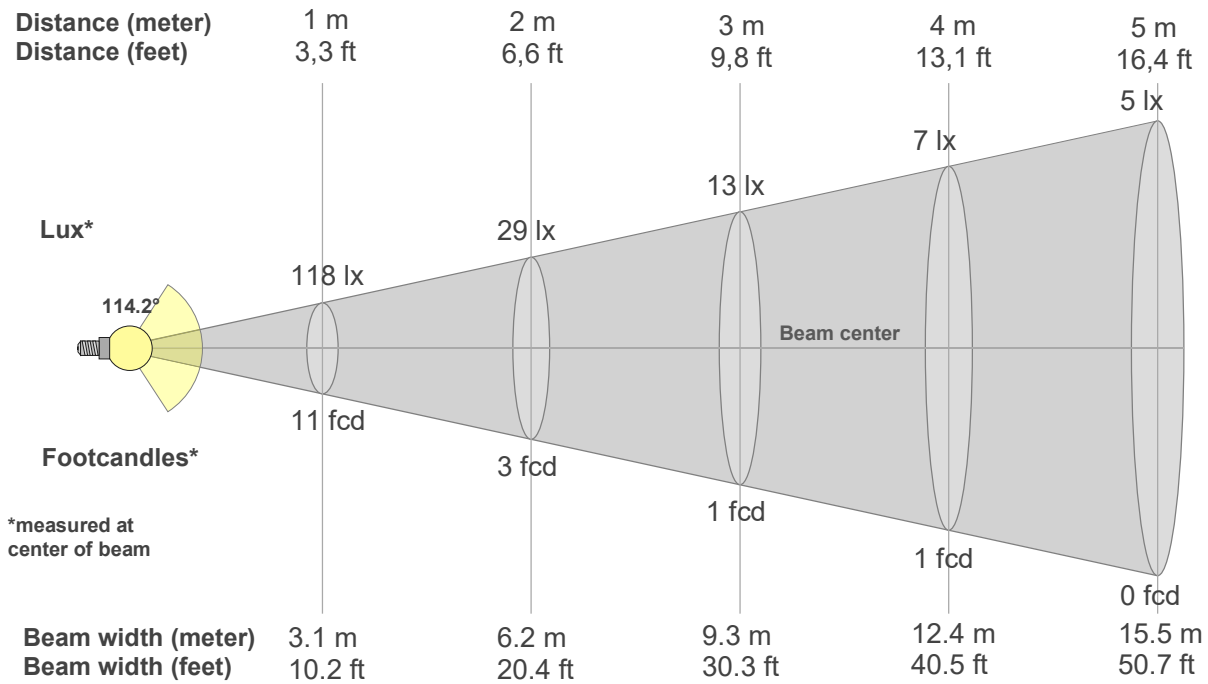
Rf 94.6
Fidelity index Rf

Rg 104.7
Gammut index Rg

Hue Bin	R _f	Graphic shifts (%)	
		Chroma	Hue
1	94	2%	-1%
2	97	1%	0%
3	96	1%	1%
4	97	0%	1%
5	95	0%	1%
6	95	3%	1%
7	96	2%	1%
8	96	2%	0%
9	96	1%	1%
10	96	0%	2%
11	90	2%	6%
12	94	1%	4%
13	93	4%	4%
14	93	4%	2%
15	89	10%	-2%
16	93	4%	-1%



5000K



Beam intensities from 1-20m

1m	2m	3m	4m	5m	6m	7m	8m	9m	10m	11m	12m	13m	14m	15m	16m	17m	18m	19m	20m
3.3ft	6.6ft	9.8ft	13.1ft	16.4ft	19.7ft	23ft	26.2ft	29.5ft	32.8ft	36.1ft	39.4ft	42.7ft	45.9ft	49.2ft	52.5ft	55.8ft	59.1ft	62.3ft	65.6ft
118lx	29lx	13lx	7lx	5lx	3lx	2lx	2lx	1lx	1lx	1lx	1lx	1lx	1lx	1lx	0lx	0lx	0lx	0lx	0lx
11fcd	2.7fcd	1.2fcd	0.7fcd	0.4fcd	0.3fcd	0.2fcd	0.2fcd	0.1fcd	0.1fcd	0.1fcd	0.1fcd	0.1fcd	0.1fcd	0fcd	0fcd	0fcd	0fcd	0fcd	0fcd

Intensities in 0° c-plane

0°	5°	10°	15°	20°	25°	30°	35°	40°	45°	50°	55°	60°	65°	70°	75°	80°	85°	90°	95°
118	118	116	114	111	106	101	95	88	80	72	63	53	43	33	22	13	5	2	1
100%	100%	98%	96%	94%	90%	86%	81%	75%	68%	61%	53%	45%	37%	28%	19%	11%	4%	2%	1%

Intensities in 90° c-plane

0°	5°	10°	15°	20°	25°	30°	35°	40°	45°	50°	55°	60°	65°	70°	75°	80°	85°	90°	95°
118	118	116	114	111	106	101	95	88	80	72	63	53	43	33	22	13	5	2	1
100%	100%	98%	96%	94%	90%	86%	81%	75%	68%	61%	53%	45%	37%	28%	19%	11%	4%	2%	1%

Intensities in 180° c-plane

0°	5°	10°	15°	20°	25°	30°	35°	40°	45°	50°	55°	60°	65°	70°	75°	80°	85°	90°	95°
118	117	116	113	110	106	101	95	88	80	72	63	53	43	33	23	14	7	1	1
100%	99%	98%	96%	93%	90%	85%	80%	75%	68%	61%	53%	45%	37%	28%	19%	12%	6%	1%	1%

Intensities in 270° c-plane

0°	5°	10°	15°	20°	25°	30°	35°	40°	45°	50°	55°	60°	65°	70°	75°	80°	85°	90°	95°
118	117	116	113	110	106	101	95	88	80	72	63	53	43	33	23	14	7	1	1
100%	99%	98%	96%	93%	90%	85%	80%	75%	68%	61%	53%	45%	37%	28%	19%	12%	6%	1%	1%

Beam angle 50%	Field angle 10%	Cutoff angle 2,5%	Intensity ratio in 120° cone	Intensity ratio in 90° cone
114.2°	161.8°	176.5°	77.1%	52.2%