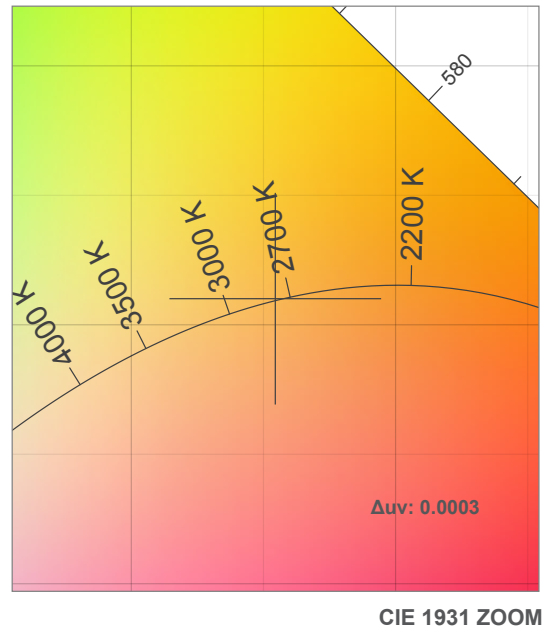
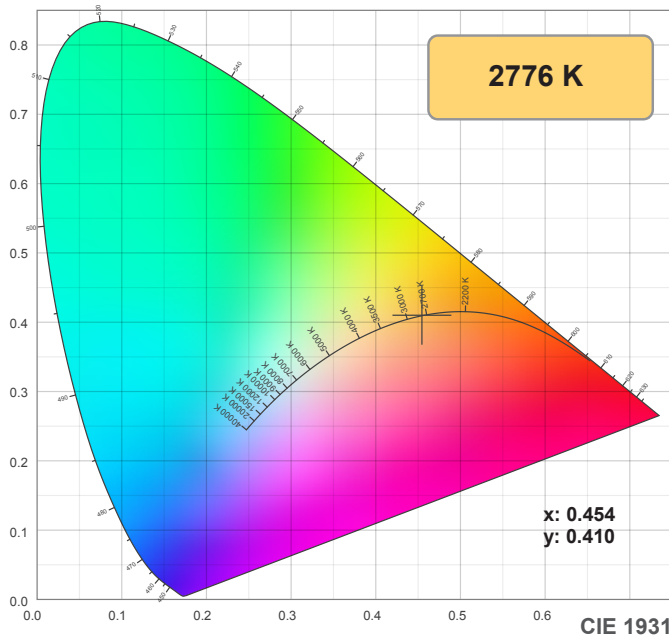
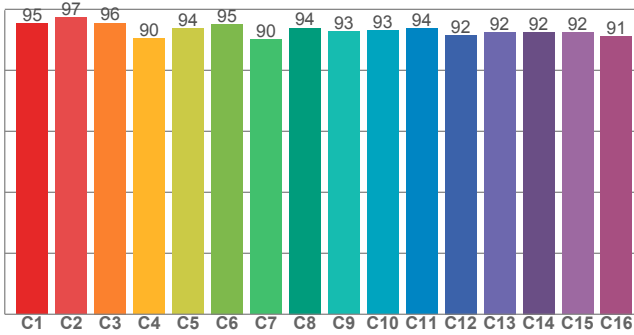


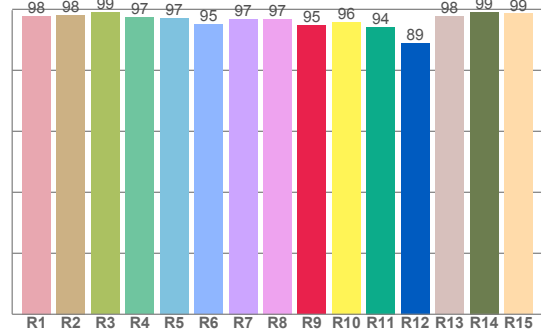
2700K



TM30: 93.4



CRI: 97.3 (R1-R8)



CRI R values, only R1-R8 are used to calculate final CRI value

R1	R2	R3	R4	R5	R6	R7	R8	R9	R10	R11	R12	R13	R14	R15
97.9	98.1	98.9	97.4	97.2	95.0	96.9	96.8	94.7	95.8	94.2	89.0	97.6	99.1	98.6

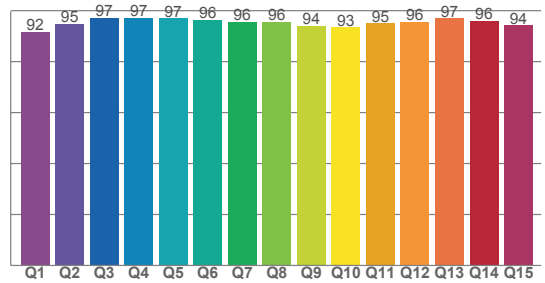
TM30 C values, 16 binned values out of total of 99 C values

C1	C2	C3	C4	C5	C6	C7	C8	C9	C10	C11	C12	C13	C14	C15	C16
95.4	97.3	95.6	90.5	93.7	95.2	90.1	93.9	92.7	93.0	93.7	91.6	92.5	92.5	92.3	91.2

CQS Q values

Q1	Q2	Q3	Q4	Q5	Q6	Q7	Q8	Q9	Q10	Q11	Q12	Q13	Q14	Q15
91.6	94.8	97.3	97.3	97.0	96.3	95.7	95.6	94.0	93.5	95.0	95.7	97.0	96.0	94.2

CQS: 95.0



Color parameters

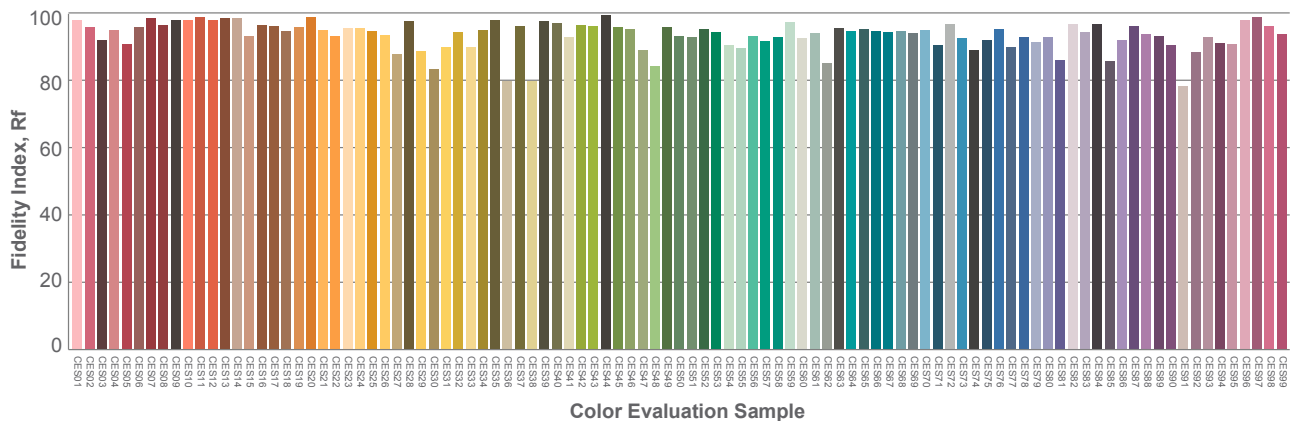
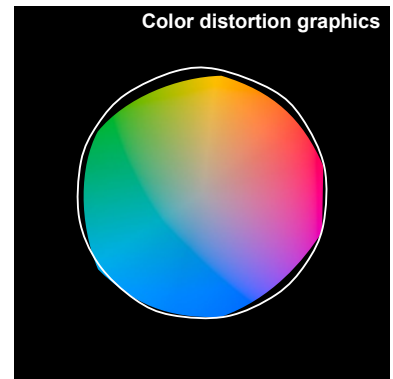
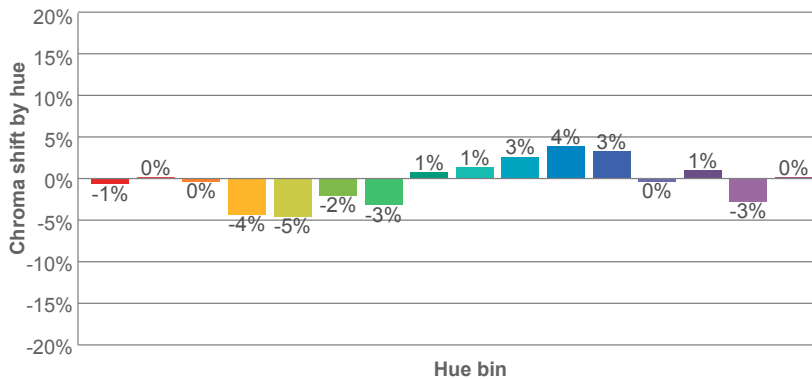
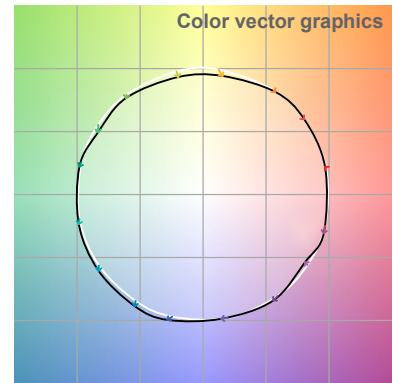
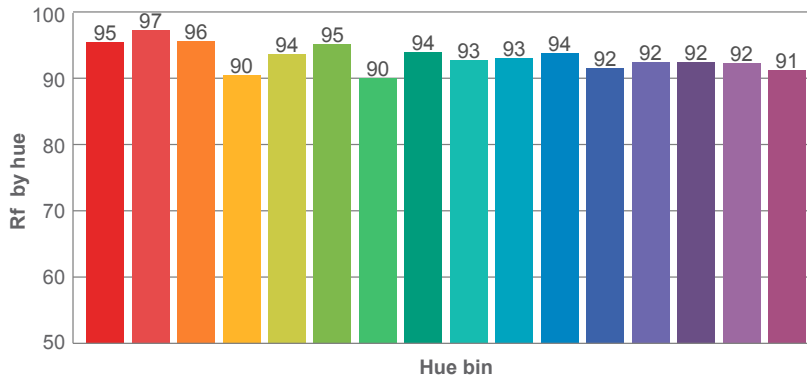
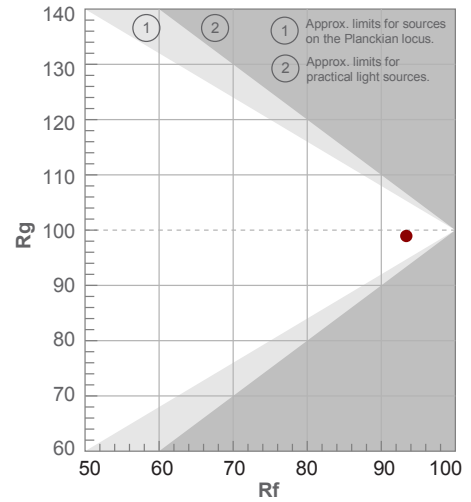
Color temperature	Color rendering index	Red component	Color fidelity	Color gamut	Color quality scale	Color coordinate cie 1931	Color coordinate cie 1931	Color coordinate	Color coordinate	Color deviation from black body
CCT	CRI	CRI R9	TM30 Rf	TM30 Rg	CQS	x	y	u	v	Δuv
2776 K	97.3	94.7	93.4	98.9	95.0	0.454	0.410	0.259	0.351	0.0003

2700K

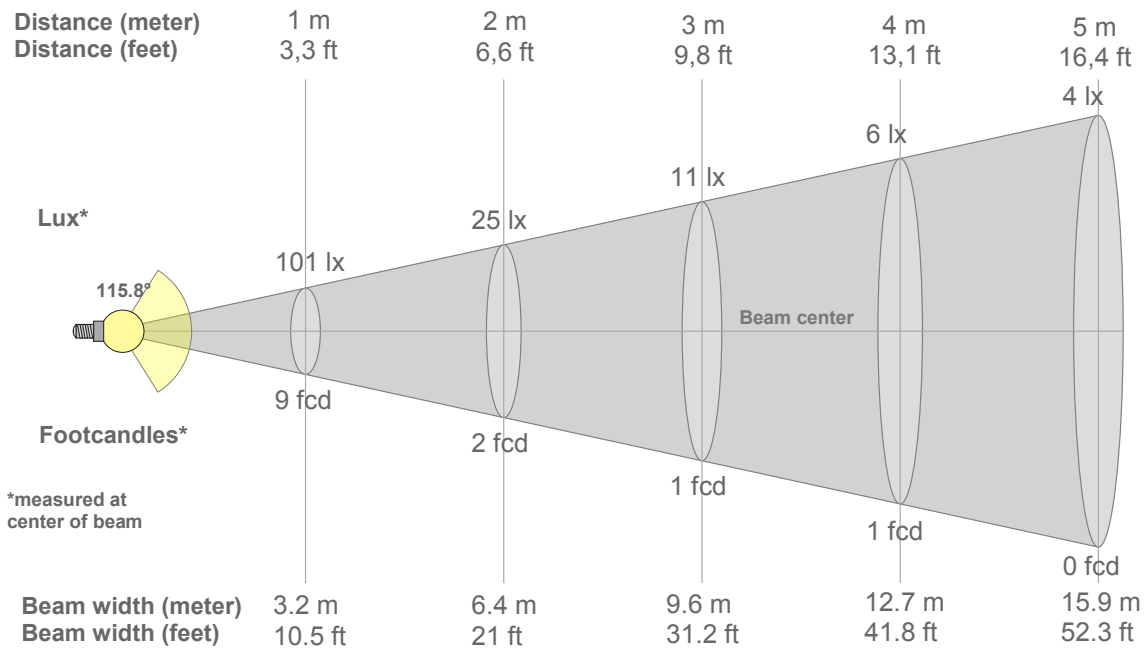
Rf 93.4
Fidelity index Rf

Rg 98.9
Gammut index Rg

Hue Bin	R _f	Graphic shifts (%)	
		Chroma	Hue
1	95	-1%	1%
2	97	0%	-1%
3	96	0%	-2%
4	90	-4%	-4%
5	94	-5%	-1%
6	95	-2%	2%
7	90	-3%	5%
8	94	1%	4%
9	93	1%	4%
10	93	3%	3%
11	94	4%	2%
12	92	3%	-3%
13	92	0%	-5%
14	92	1%	-5%
15	92	-3%	1%
16	91	0%	-6%



2700K



Beam intensities from 1-20m

1m	2m	3m	4m	5m	6m	7m	8m	9m	10m	11m	12m	13m	14m	15m	16m	17m	18m	19m	20m
3.3ft	6.6ft	9.8ft	13.1ft	16.4ft	19.7ft	23ft	26.2ft	29.5ft	32.8ft	36.1ft	39.4ft	42.7ft	45.9ft	49.2ft	52.5ft	55.8ft	59.1ft	62.3ft	65.6ft
101lx	25lx	11lx	6lx	4lx	3lx	2lx	2lx	1lx	1lx	1lx	1lx	1lx	1lx	0lx	0lx	0lx	0lx	0lx	0lx
9.4fcd	2.4fcd	1fcd	0.6fcd	0.4fcd	0.3fcd	0.2fcd	0.1fcd	0.1fcd	0.1fcd	0.1fcd	0.1fcd	0.1fcd	0fcd	0fcd	0fcd	0fcd	0fcd	0fcd	0fcd

Intensities in 0° c-plane

0°	5°	10°	15°	20°	25°	30°	35°	40°	45°	50°	55°	60°	65°	70°	75°	80°	85°	90°	95°
101	101	100	98	95	91	87	82	76	70	63	55	47	39	30	21	12	5	1	1
100%	100%	98%	96%	93%	90%	86%	81%	75%	69%	62%	54%	47%	38%	29%	21%	12%	5%	1%	1%

Intensities in 90° c-plane

0°	5°	10°	15°	20°	25°	30°	35°	40°	45°	50°	55°	60°	65°	70°	75°	80°	85°	90°	95°
101	101	100	98	95	91	87	82	76	70	63	55	47	39	30	21	12	5	1	1
100%	100%	98%	96%	93%	90%	86%	81%	75%	69%	62%	54%	47%	38%	29%	21%	12%	5%	1%	1%

Intensities in 180° c-plane

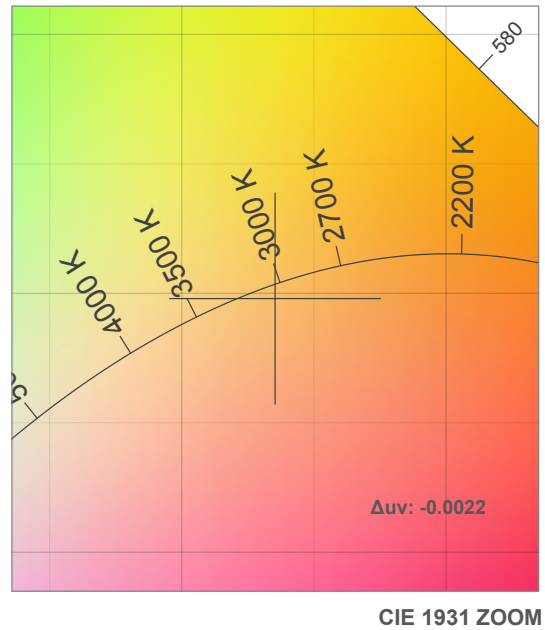
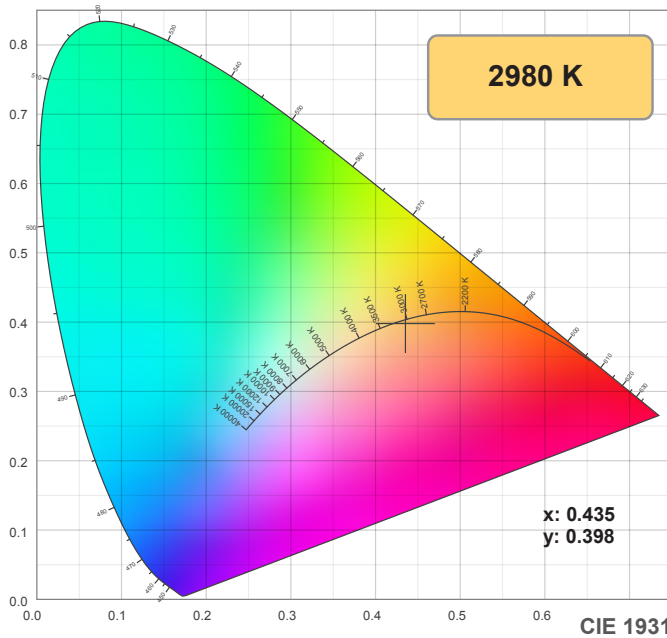
0°	5°	10°	15°	20°	25°	30°	35°	40°	45°	50°	55°	60°	65°	70°	75°	80°	85°	90°	95°
101	101	100	98	95	91	87	82	76	70	63	55	47	38	30	20	12	5	1	0
100%	100%	98%	96%	94%	90%	86%	81%	75%	69%	62%	55%	46%	38%	29%	20%	12%	5%	1%	0%

Intensities in 270° c-plane

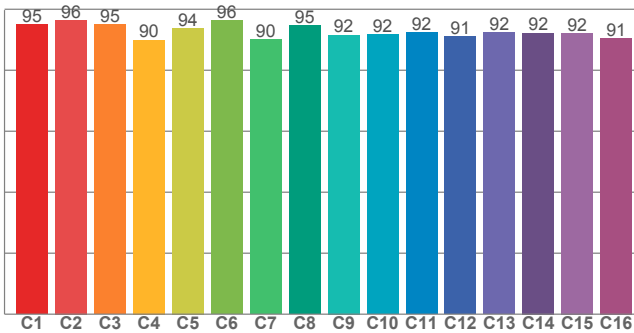
0°	5°	10°	15°	20°	25°	30°	35°	40°	45°	50°	55°	60°	65°	70°	75°	80°	85°	90°	95°
101	101	100	98	95	91	87	82	76	70	63	55	47	38	30	20	12	5	1	0
100%	100%	98%	96%	94%	90%	86%	81%	75%	69%	62%	55%	46%	38%	29%	20%	12%	5%	1%	0%

Beam angle 50%	Field angle 10%	Cutoff angle 2,5%	Intensity ratio in 120° cone	Intensity ratio in 90° cone
115.8°	162.7°	175.7°	76.9%	51.8%

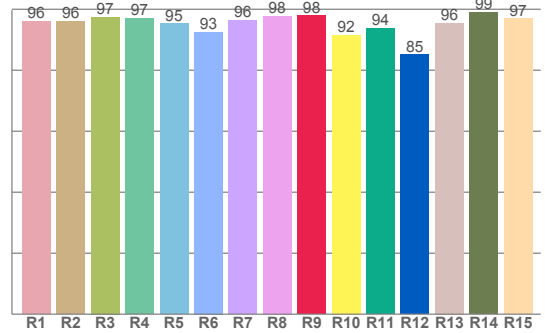
3000K



TM30: 92.9



CRI: 96.0 (R1-R8)



CRI R values, only R1-R8 are used to calculate final CRI value

R1	R2	R3	R4	R5	R6	R7	R8	R9	R10	R11	R12	R13	R14	R15
96.0	96.0	97.4	97.0	95.3	92.6	96.4	97.8	97.9	91.6	93.8	85.1	95.5	99.0	96.9

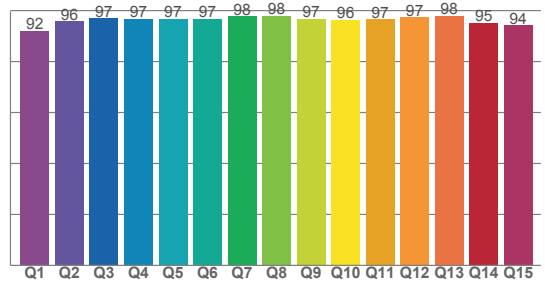
TM30 C values, 16 binned values out of total of 99 C values

C1	C2	C3	C4	C5	C6	C7	C8	C9	C10	C11	C12	C13	C14	C15	C16
95.0	96.5	95.0	90.0	93.8	96.3	90.0	94.7	91.6	91.6	92.3	91.0	92.4	92.3	92.2	90.5

CQS Q values

Q1	Q2	Q3	Q4	Q5	Q6	Q7	Q8	Q9	Q10	Q11	Q12	Q13	Q14	Q15
92.1	95.7	96.9	96.8	96.8	96.7	97.7	97.9	96.7	96.3	96.5	97.4	97.9	95.2	94.2

CQS: 95.8



Color parameters

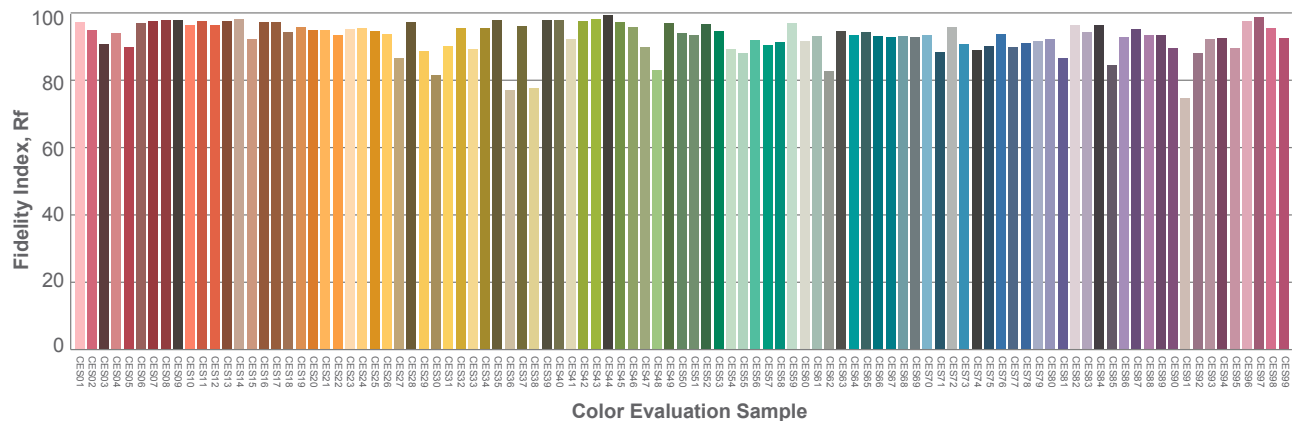
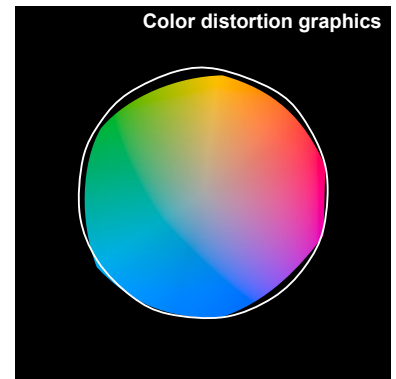
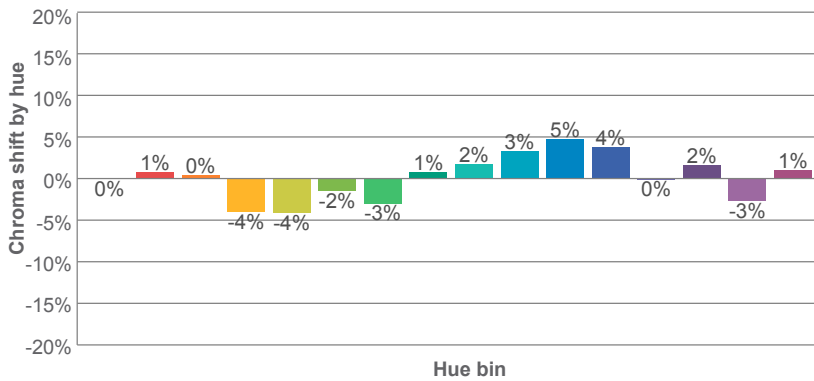
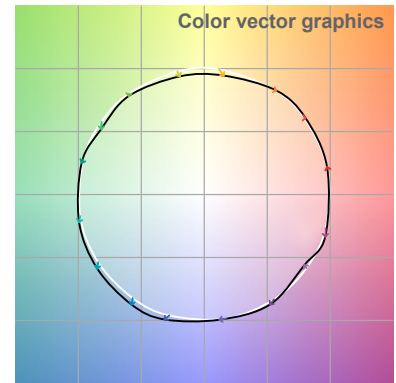
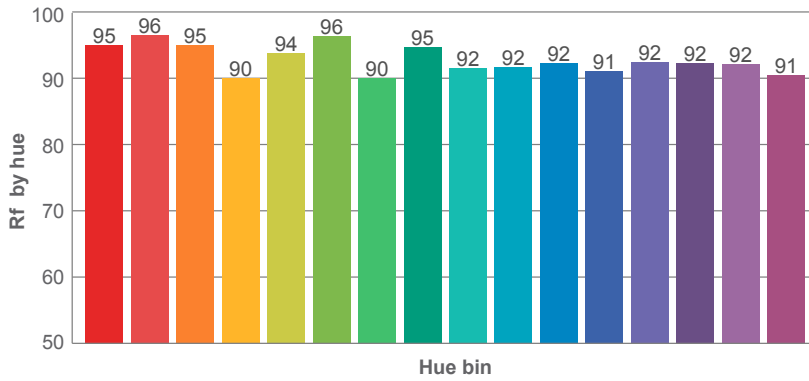
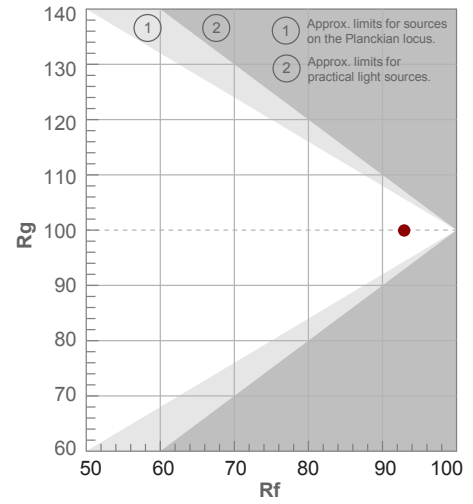
Color temperature	Color rendering index	Red component	Color fidelity	Color gamut	Color quality scale	Color coordinate cie 1931	Color coordinate cie 1931	Color coordinate	Color coordinate	Color deviation from black body
CCT	CRI	CRI R9	TM30 Rf	TM30 Rg	CQS	x	y	u	v	Δuv
2980 K	96.0	97.9	92.9	99.9	95.8	0.435	0.398	0.252	0.346	-0.0022

3000K

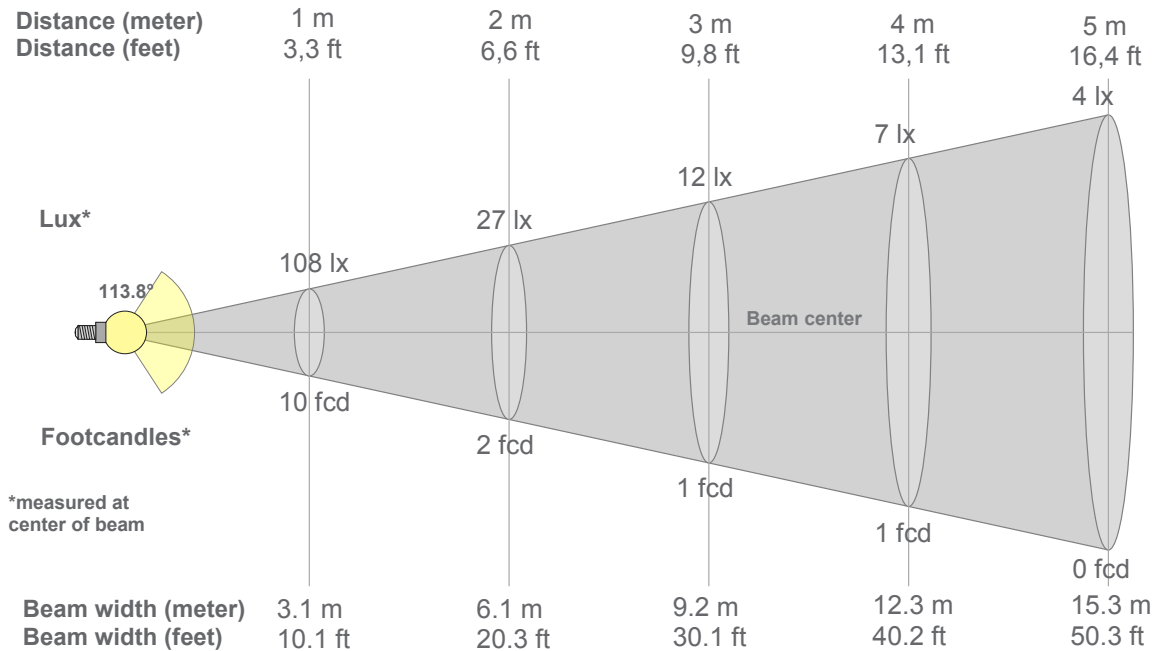
Rf 92.9
Fidelity index Rf

Rg 99.9
Gammut index Rg

Hue Bin	R _f	Graphic shifts (%)	
		Chroma	Hue
1	95	0%	1%
2	96	1%	-1%
3	95	0%	-2%
4	90	-4%	-4%
5	94	-4%	-1%
6	96	-2%	1%
7	90	-3%	5%
8	95	1%	3%
9	92	2%	5%
10	92	3%	4%
11	92	5%	2%
12	91	4%	-3%
13	92	0%	-5%
14	92	2%	-5%
15	92	-3%	1%
16	91	1%	-7%



3000K



Beam intensities from 1-20m

1m	2m	3m	4m	5m	6m	7m	8m	9m	10m	11m	12m	13m	14m	15m	16m	17m	18m	19m	20m
3.3ft	6.6ft	9.8ft	13.1ft	16.4ft	19.7ft	23ft	26.2ft	29.5ft	32.8ft	36.1ft	39.4ft	42.7ft	45.9ft	49.2ft	52.5ft	55.8ft	59.1ft	62.3ft	65.6ft
108lx	27lx	12lx	7lx	4lx	3lx	2lx	2lx	1lx	1lx	1lx	1lx	1lx	1lx	0lx	0lx	0lx	0lx	0lx	0lx
10fcd	2.5fcd	1.1fcd	0.6fcd	0.4fcd	0.3fcd	0.2fcd	0.2fcd	0.1fcd	0.1fcd	0.1fcd	0.1fcd	0.1fcd	0.1fcd	0fcd	0fcd	0fcd	0fcd	0fcd	0fcd

Intensities in 0° c-plane

0°	5°	10°	15°	20°	25°	30°	35°	40°	45°	50°	55°	60°	65°	70°	75°	80°	85°	90°	95°
108	107	104	106	104	98	89	83	77	71	64	57	49	41	32	23	15	7	2	1
100%	99%	97%	98%	97%	91%	83%	77%	72%	66%	60%	53%	46%	38%	30%	22%	14%	7%	2%	1%

Intensities in 90° c-plane

0°	5°	10°	15°	20°	25°	30°	35°	40°	45°	50°	55°	60°	65°	70°	75°	80°	85°	90°	95°
108	107	104	106	104	98	89	83	77	71	64	57	49	41	32	23	15	7	2	1
100%	99%	97%	98%	97%	91%	83%	77%	72%	66%	60%	53%	46%	38%	30%	22%	14%	7%	2%	1%

Intensities in 180° c-plane

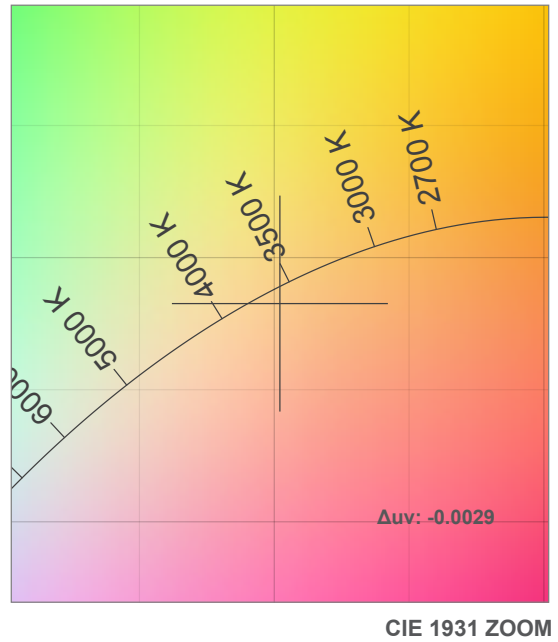
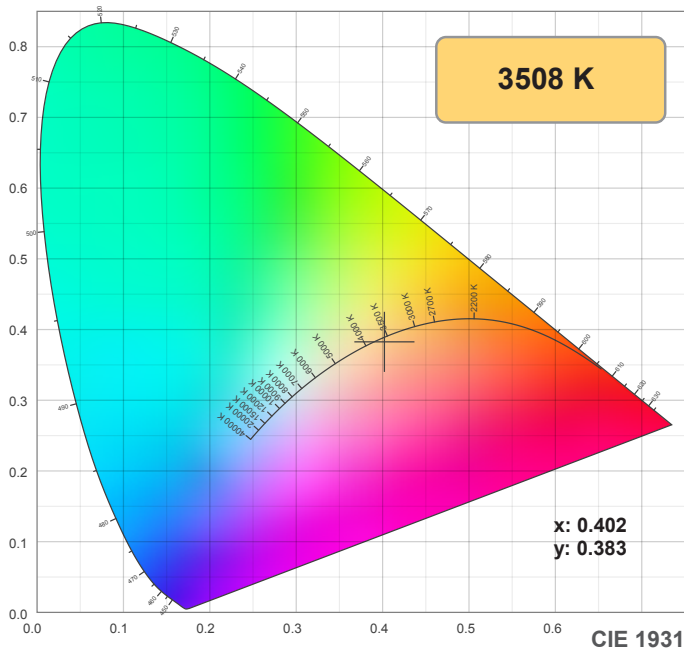
0°	5°	10°	15°	20°	25°	30°	35°	40°	45°	50°	55°	60°	65°	70°	75°	80°	85°	90°	95°
108	108	107	104	102	100	94	88	81	74	66	57	48	36	27	18	9	3	1	0
100%	100%	99%	97%	95%	93%	87%	81%	76%	69%	61%	53%	44%	34%	25%	16%	9%	3%	0%	0%

Intensities in 270° c-plane

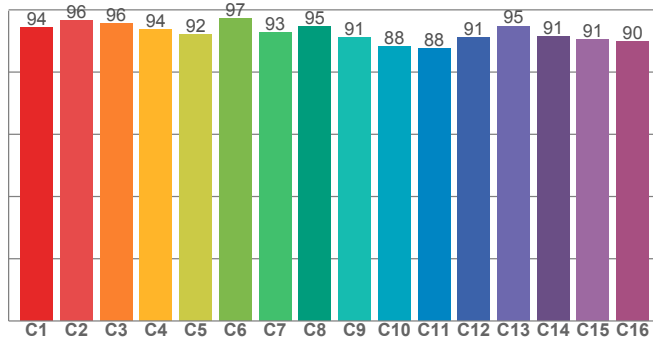
0°	5°	10°	15°	20°	25°	30°	35°	40°	45°	50°	55°	60°	65°	70°	75°	80°	85°	90°	95°
108	108	107	104	102	100	94	88	81	74	66	57	48	36	27	18	9	3	1	0
100%	100%	99%	97%	95%	93%	87%	81%	76%	69%	61%	53%	44%	34%	25%	16%	9%	3%	0%	0%

Beam angle 50%	Field angle 10%	Cutoff angle 2,5%	Intensity ratio in 120° cone	Intensity ratio in 90° cone
113.8°	161.7°	175°	77.6%	52.7%

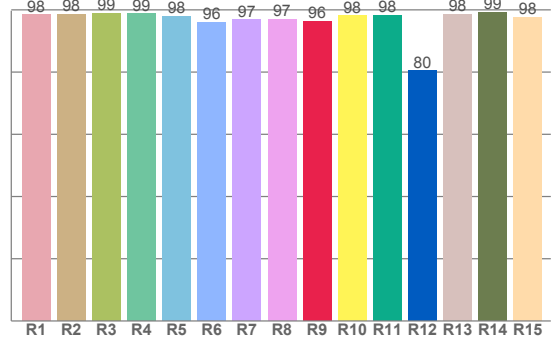
3500K



TM30: 92.6



CRI: 97.8 (R1-R8)



CRI R values, only R1-R8 are used to calculate final CRI value

R1	R2	R3	R4	R5	R6	R7	R8	R9	R10	R11	R12	R13	R14	R15
98.4	98.5	98.9	98.7	97.9	95.9	96.8	97.0	96.2	98.1	98.2	80.4	98.5	99.1	97.7

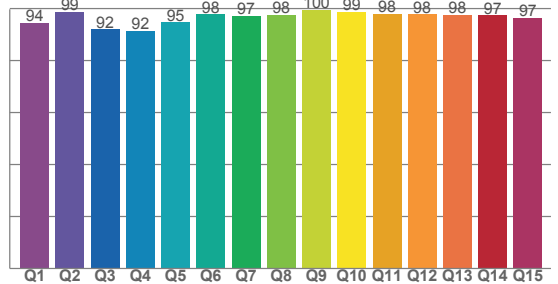
TM30 C values, 16 binned values out of total of 99 C values

C1	C2	C3	C4	C5	C6	C7	C8	C9	C10	C11	C12	C13	C14	C15	C16
94.4	96.5	95.8	93.7	92.2	97.4	92.8	94.7	91.1	88.3	87.7	91.2	94.8	91.5	90.6	89.8

CQS Q values

Q1	Q2	Q3	Q4	Q5	Q6	Q7	Q8	Q9	Q10	Q11	Q12	Q13	Q14	Q15
94.4	98.6	92.0	91.5	94.7	97.8	97.2	97.7	99.6	98.6	98.0	97.8	97.7	97.4	96.5

CQS: 95.9



Color parameters

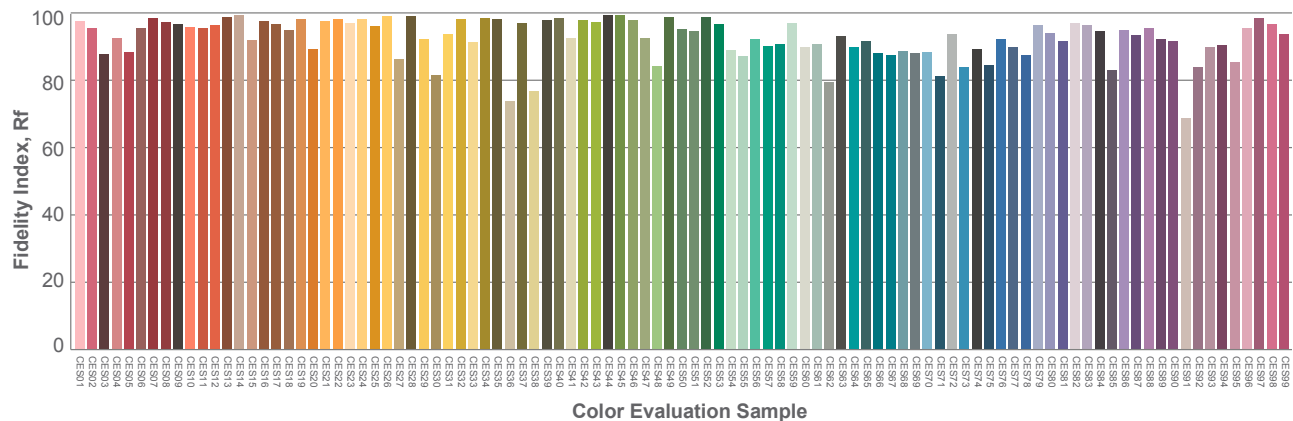
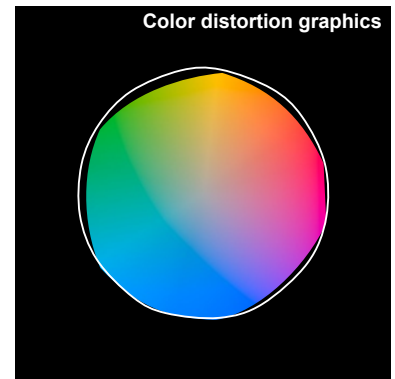
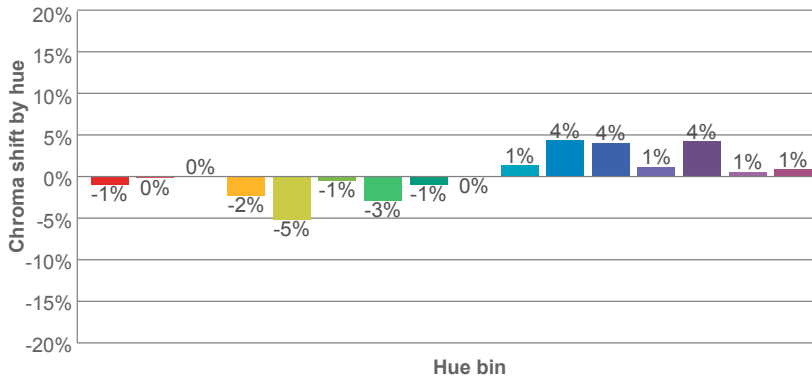
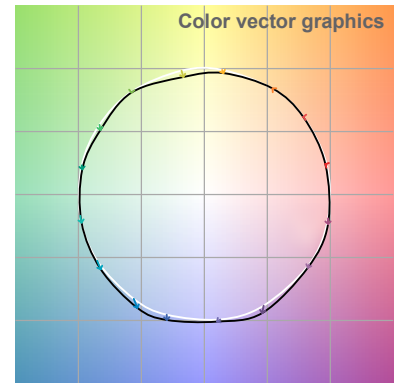
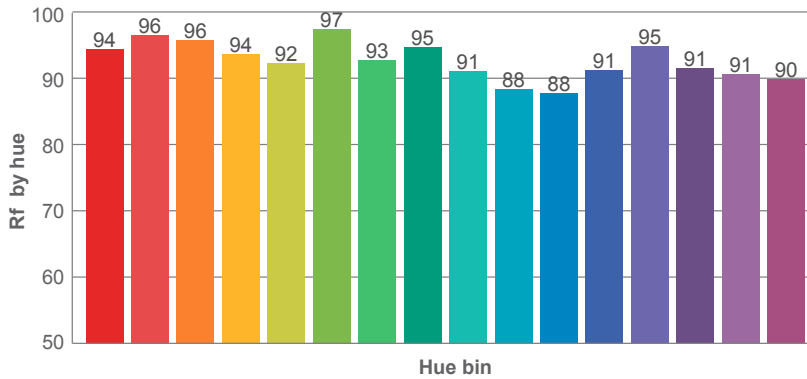
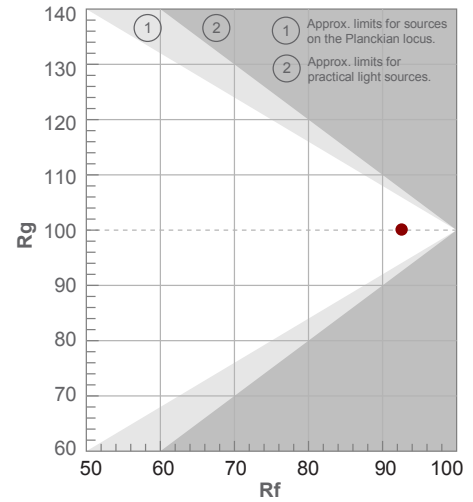
Color temperature	Color rendering index	Red component	Color fidelity	Color gamut	Color quality scale	Color coordinate cie 1931	Color coordinate cie 1931	Color coordinate	Color coordinate	Color deviation from black body
CCT	CRI	CRI R9	TM30 Rf	TM30 Rg	CQS	x	y	u	v	Δuv
3508 K	97.8	96.2	92.6	100.1	95.9	0.402	0.383	0.237	0.338	-0.0029

3500K

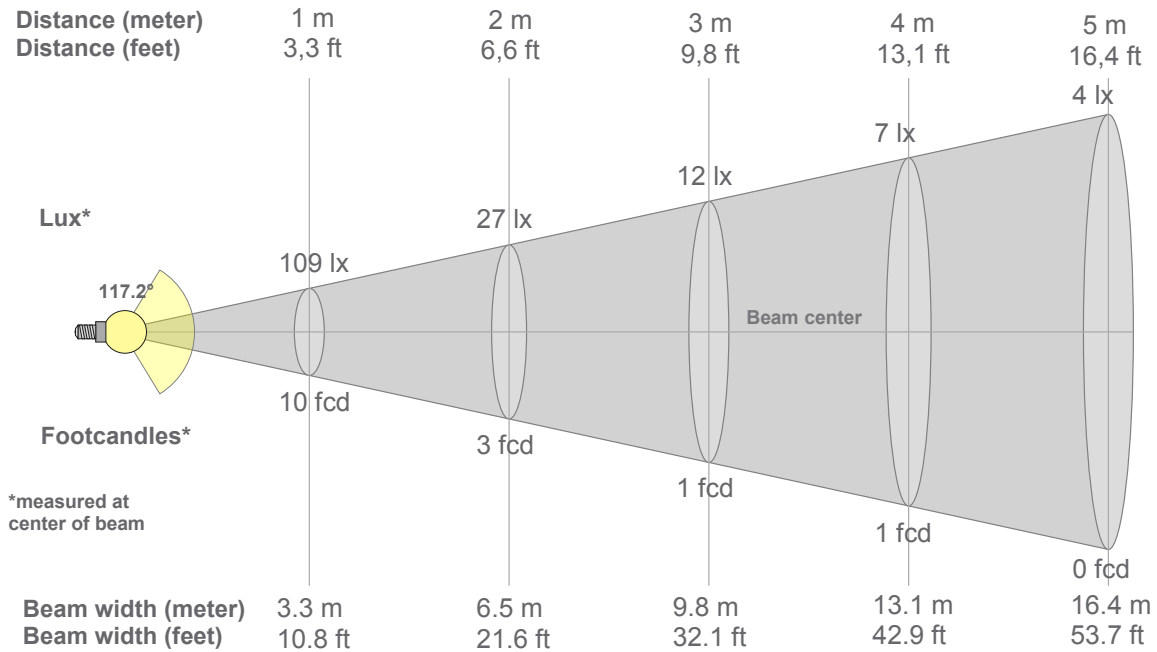
Rf 92.6
Fidelity index Rf

Rg 100.1
Gammut index Rg

Hue Bin	R _f	Graphic shifts (%)	
		Chroma	Hue
1	94	-1%	1%
2	96	0%	0%
3	96	0%	1%
4	94	-2%	-2%
5	92	-5%	-1%
6	97	-1%	0%
7	93	-3%	3%
8	95	-1%	3%
9	91	0%	5%
10	88	1%	7%
11	88	4%	6%
12	91	4%	1%
13	95	1%	-3%
14	91	4%	-4%
15	91	1%	-3%
16	90	1%	-4%



3500K



Beam intensities from 1-20m

1m	2m	3m	4m	5m	6m	7m	8m	9m	10m	11m	12m	13m	14m	15m	16m	17m	18m	19m	20m
3.3ft	6.6ft	9.8ft	13.1ft	16.4ft	19.7ft	23ft	26.2ft	29.5ft	32.8ft	36.1ft	39.4ft	42.7ft	45.9ft	49.2ft	52.5ft	55.8ft	59.1ft	62.3ft	65.6ft
109lx	27lx	12lx	7lx	4lx	3lx	2lx	2lx	1lx	1lx	1lx	1lx	1lx	1lx	0lx	0lx	0lx	0lx	0lx	0lx
10.1fcd	2.5fcd	1.1fcd	0.6fcd	0.4fcd	0.3fcd	0.2fcd	0.2fcd	0.1fcd	0.1fcd	0.1fcd	0.1fcd	0.1fcd	0.1fcd	0fcd	0fcd	0fcd	0fcd	0fcd	0fcd

Intensities in 0° c-plane

0°	5°	10°	15°	20°	25°	30°	35°	40°	45°	50°	55°	60°	65°	70°	75°	80°	85°	90°	95°
109	109	107	105	102	98	94	89	83	76	69	61	52	43	33	24	14	7	2	0
100%	99%	98%	96%	93%	90%	86%	81%	76%	70%	63%	56%	48%	39%	31%	22%	13%	6%	2%	0%

Intensities in 90° c-plane

0°	5°	10°	15°	20°	25°	30°	35°	40°	45°	50°	55°	60°	65°	70°	75°	80°	85°	90°	95°
109	109	107	105	102	98	94	89	83	76	69	61	52	43	33	24	14	7	2	0
100%	99%	98%	96%	93%	90%	86%	81%	76%	70%	63%	56%	48%	39%	31%	22%	13%	6%	2%	0%

Intensities in 180° c-plane

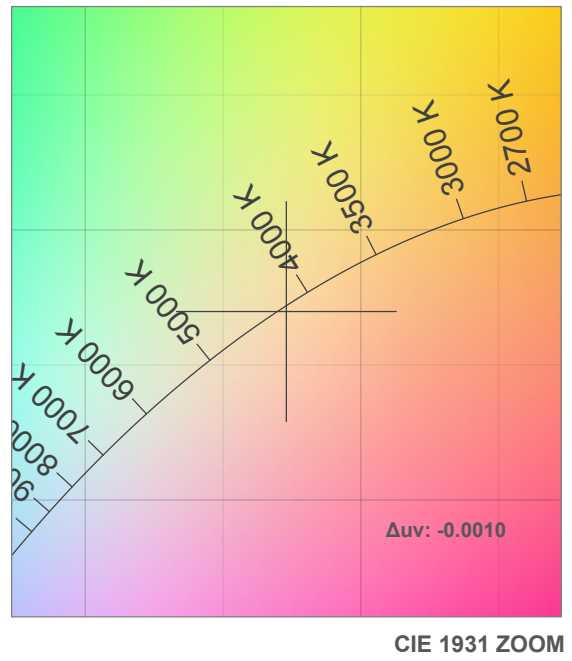
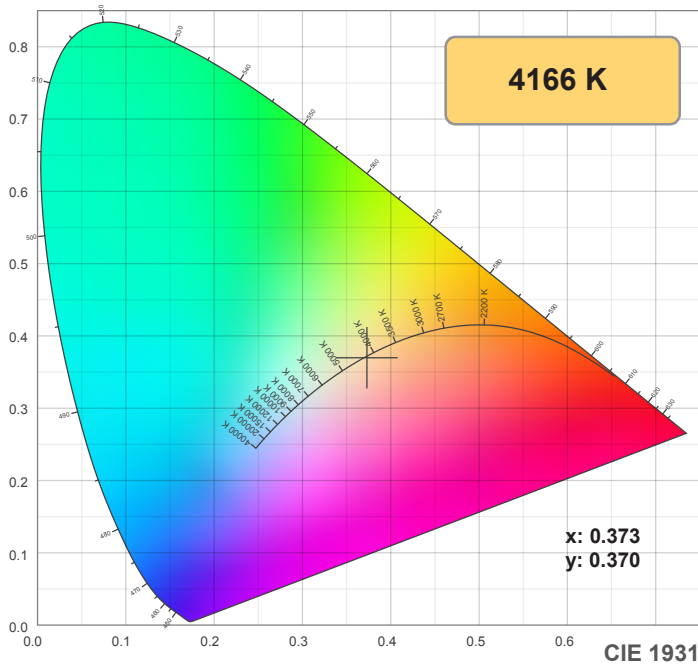
0°	5°	10°	15°	20°	25°	30°	35°	40°	45°	50°	55°	60°	65°	70°	75°	80°	85°	90°	95°
109	109	108	106	103	99	95	90	83	77	69	61	52	43	33	23	14	6	1	0
100%	100%	99%	97%	94%	91%	87%	82%	76%	70%	63%	56%	48%	39%	30%	21%	12%	5%	1%	0%

Intensities in 270° c-plane

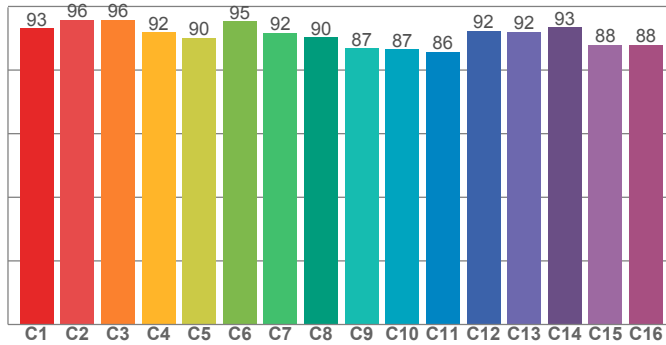
0°	5°	10°	15°	20°	25°	30°	35°	40°	45°	50°	55°	60°	65°	70°	75°	80°	85°	90°	95°
109	109	108	106	103	99	95	90	83	77	69	61	52	43	33	23	14	6	1	0
100%	100%	99%	97%	94%	91%	87%	82%	76%	70%	63%	56%	48%	39%	30%	21%	12%	5%	1%	0%

Beam angle 50%	Field angle 10%	Cutoff angle 2,5%	Intensity ratio in 120° cone	Intensity ratio in 90° cone
117.2°	163.6°	176.1°	76.5%	51.3%

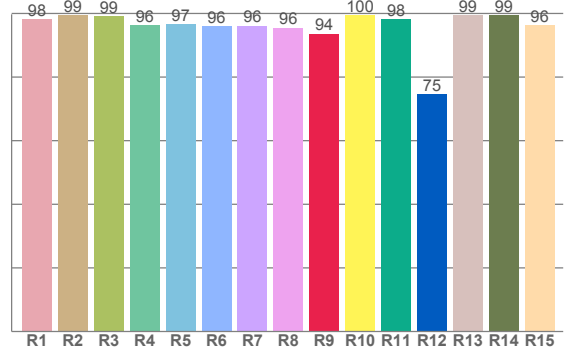
4200K



TM30: 90.9



CRI: 97.2 (R1-R8)



CRI R values, only R1-R8 are used to calculate final CRI value

R1	R2	R3	R4	R5	R6	R7	R8	R9	R10	R11	R12	R13	R14	R15
98.2	99.5	99.1	96.4	96.6	96.0	96.2	95.6	93.7	99.6	98.2	74.5	99.5	99.4	96.3

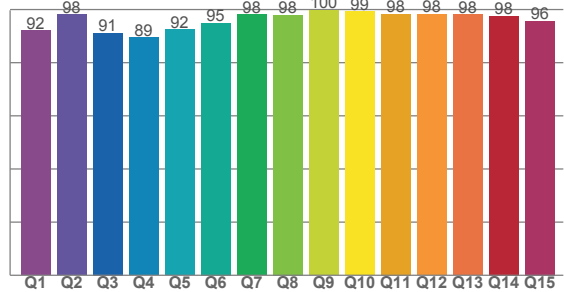
TM30 C values, 16 binned values out of total of 99 C values

C1	C2	C3	C4	C5	C6	C7	C8	C9	C10	C11	C12	C13	C14	C15	C16
93.1	95.8	95.8	91.9	90.2	95.3	91.7	90.3	86.8	86.6	85.8	92.4	92.1	93.4	87.9	87.9

CQS Q values

Q1	Q2	Q3	Q4	Q5	Q6	Q7	Q8	Q9	Q10	Q11	Q12	Q13	Q14	Q15
92.2	98.1	91.1	89.4	92.4	94.9	98.2	98.0	99.7	99.2	98.3	98.2	98.1	97.5	95.7

CQS: 95.0



Color parameters

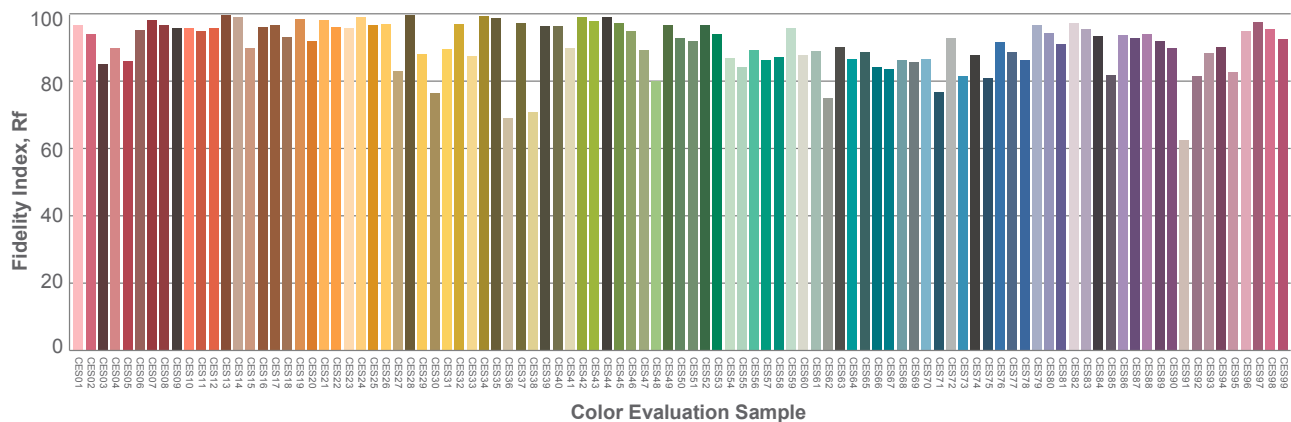
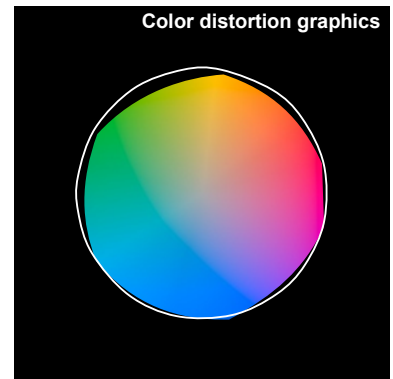
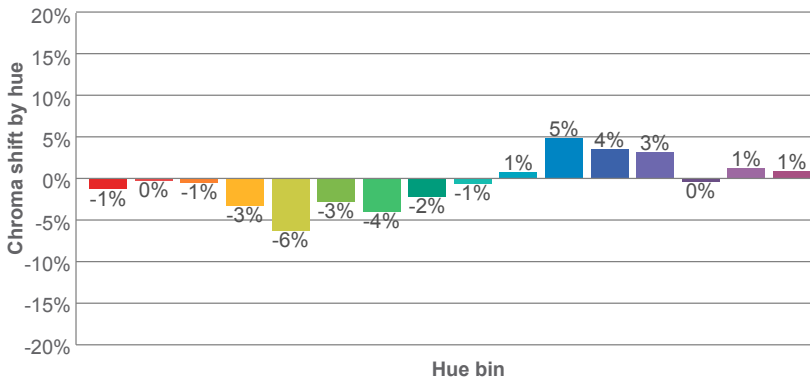
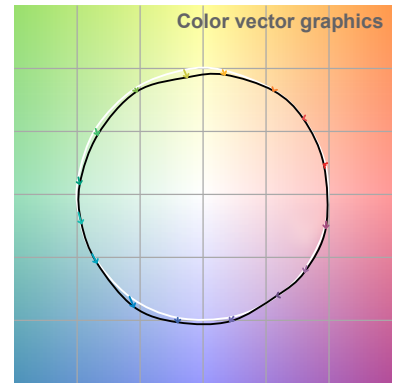
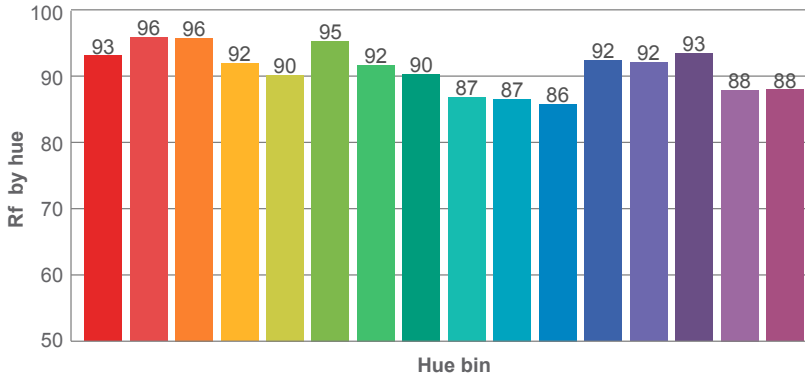
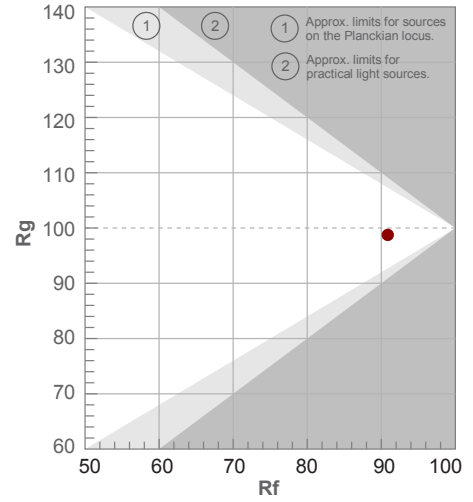
Color temperature	Color rendering index	Red component	Color fidelity	Color gamut	Color quality scale	Color coordinate cie 1931	Color coordinate cie 1931	Color coordinate	Color coordinate	Color deviation from black body
CCT	CRI	CRI R9	TM30 Rf	TM30 Rg	CQS	x	y	u	v	Δuv
4166 K	97.2	93.7	90.9	98.7	95.0	0.373	0.370	0.223	0.332	-0.0010

4200K

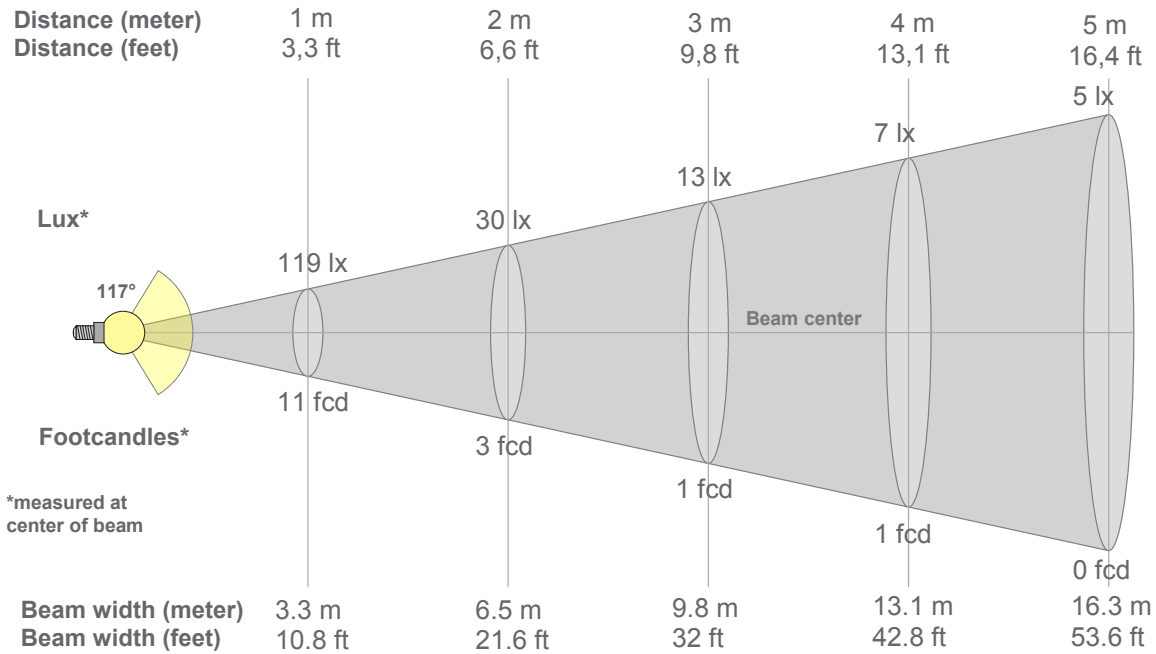
Rf 90.9
Fidelity index Rf

Rg 98.7
Gammut index Rg

Hue Bin	R _f	Graphic shifts (%)	
		Chroma	Hue
1	93	-1%	1%
2	96	0%	0%
3	96	-1%	0%
4	92	-3%	-2%
5	90	-6%	-1%
6	95	-3%	0%
7	92	-4%	3%
8	90	-2%	5%
9	87	-1%	9%
10	87	1%	8%
11	86	5%	7%
12	92	4%	1%
13	92	3%	-3%
14	93	0%	-1%
15	88	1%	-5%
16	88	1%	-5%



4200K



Beam intensities from 1-20m

1m	2m	3m	4m	5m	6m	7m	8m	9m	10m	11m	12m	13m	14m	15m	16m	17m	18m	19m	20m
3.3ft	6.6ft	9.8ft	13.1ft	16.4ft	19.7ft	23ft	26.2ft	29.5ft	32.8ft	36.1ft	39.4ft	42.7ft	45.9ft	49.2ft	52.5ft	55.8ft	59.1ft	62.3ft	65.6ft
119lx	30lx	13lx	7lx	5lx	3lx	2lx	2lx	1lx	1lx	1lx	1lx	1lx	1lx	1lx	0lx	0lx	0lx	0lx	0lx
11fcd	2.8fcd	1.2fcd	0.7fcd	0.4fcd	0.3fcd	0.2fcd	0.2fcd	0.1fcd	0.1fcd	0.1fcd	0.1fcd	0.1fcd	0.1fcd	0fcd	0fcd	0fcd	0fcd	0fcd	0fcd

Intensities in 0° c-plane

0°	5°	10°	15°	20°	25°	30°	35°	40°	45°	50°	55°	60°	65°	70°	75°	80°	85°	90°	95°
119	118	117	114	111	107	102	97	90	83	75	66	57	46	36	25	15	7	1	1
100%	99%	98%	96%	94%	90%	86%	81%	76%	70%	63%	56%	48%	39%	30%	21%	13%	6%	1%	0%

Intensities in 90° c-plane

0°	5°	10°	15°	20°	25°	30°	35°	40°	45°	50°	55°	60°	65°	70°	75°	80°	85°	90°	95°
119	118	117	114	111	107	102	97	90	83	75	66	57	46	36	25	15	7	1	1
100%	99%	98%	96%	94%	90%	86%	81%	76%	70%	63%	56%	48%	39%	30%	21%	13%	6%	1%	0%

Intensities in 180° c-plane

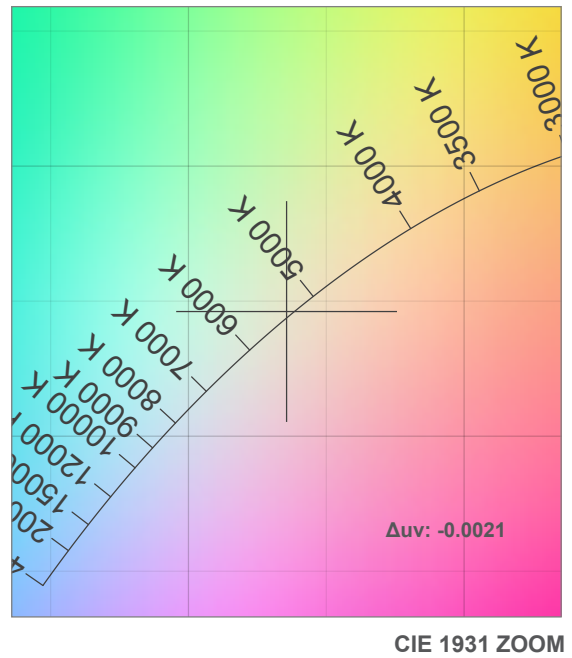
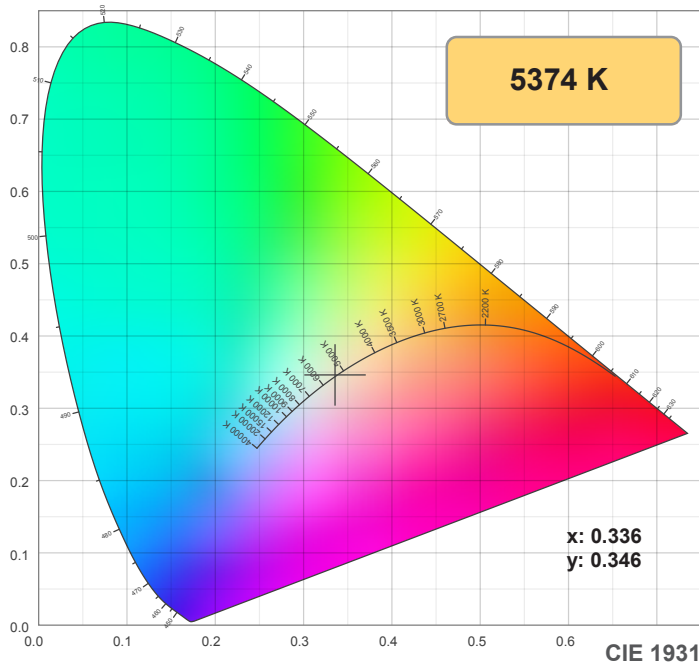
0°	5°	10°	15°	20°	25°	30°	35°	40°	45°	50°	55°	60°	65°	70°	75°	80°	85°	90°	95°
119	118	117	115	112	108	103	97	91	83	75	66	56	46	35	24	14	5	1	0
100%	100%	99%	97%	94%	91%	87%	82%	77%	70%	63%	56%	48%	39%	30%	20%	12%	5%	1%	0%

Intensities in 270° c-plane

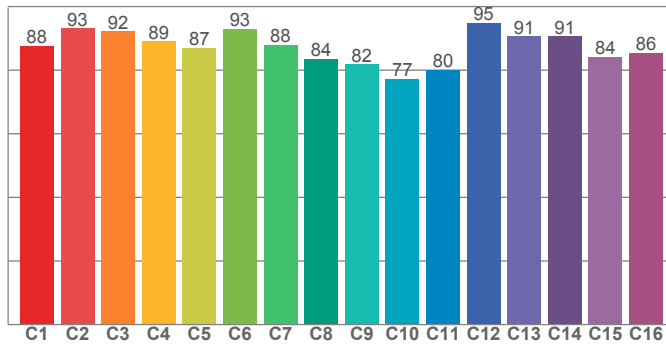
0°	5°	10°	15°	20°	25°	30°	35°	40°	45°	50°	55°	60°	65°	70°	75°	80°	85°	90°	95°
119	118	117	115	112	108	103	97	91	83	75	66	56	46	35	24	14	5	1	0
100%	100%	99%	97%	94%	91%	87%	82%	77%	70%	63%	56%	48%	39%	30%	20%	12%	5%	1%	0%

Beam angle 50%	Field angle 10%	Cutoff angle 2,5%	Intensity ratio in 120° cone	Intensity ratio in 90° cone
117°	162.8°	175.6°	76.7%	51.6%

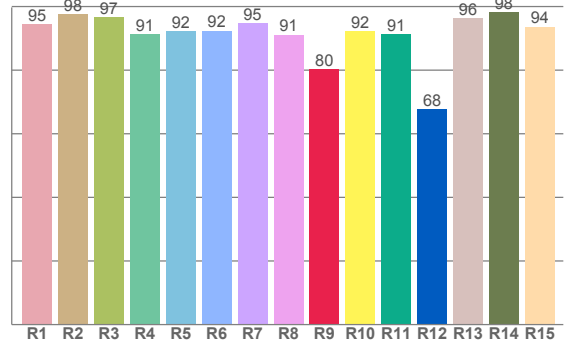
5000K



TM30: 87.2



CRI: 93.8 (R1-R8)



CRI R values, only R1-R8 are used to calculate final CRI value

R1	R2	R3	R4	R5	R6	R7	R8	R9	R10	R11	R12	R13	R14	R15
94.5	97.7	96.6	91.4	92.2	92.4	94.7	91.2	80.3	92.3	91.4	67.7	96.3	98.3	93.7

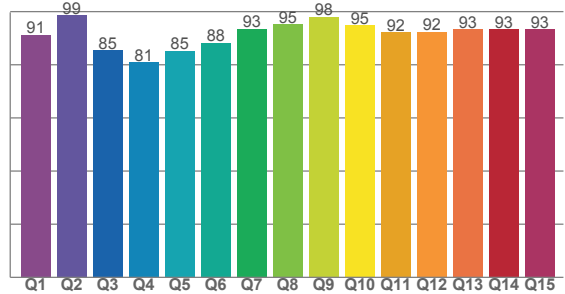
TM30 C values, 16 binned values out of total of 99 C values

C1	C2	C3	C4	C5	C6	C7	C8	C9	C10	C11	C12	C13	C14	C15	C16
87.6	93.2	92.2	89.1	87.1	93.0	87.9	83.5	81.9	77.2	80.1	94.9	90.7	90.7	84.3	85.5

CQS Q values

Q1	Q2	Q3	Q4	Q5	Q6	Q7	Q8	Q9	Q10	Q11	Q12	Q13	Q14	Q15
91.2	98.6	85.4	80.9	85.1	88.1	93.5	95.2	97.9	94.8	92.1	92.4	93.3	93.2	93.2

CQS: 90.4



Color parameters

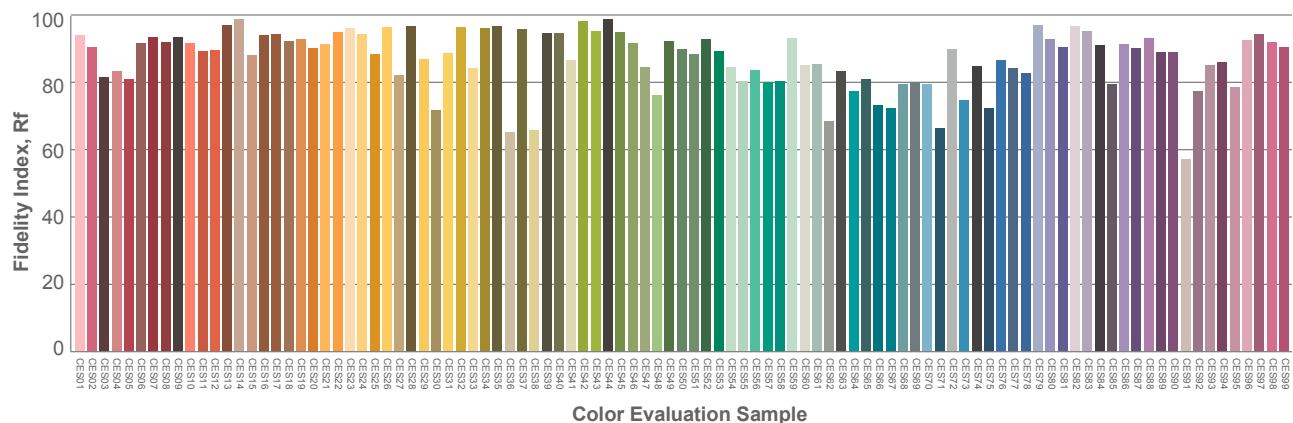
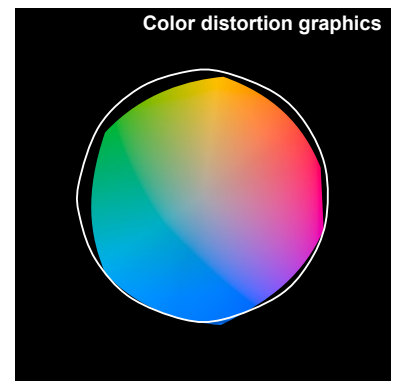
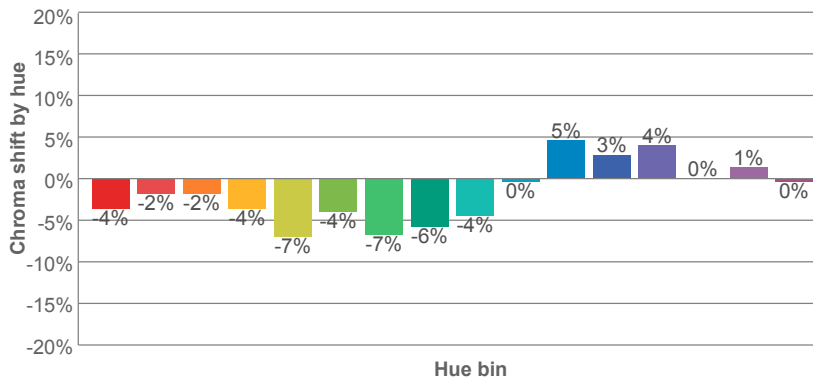
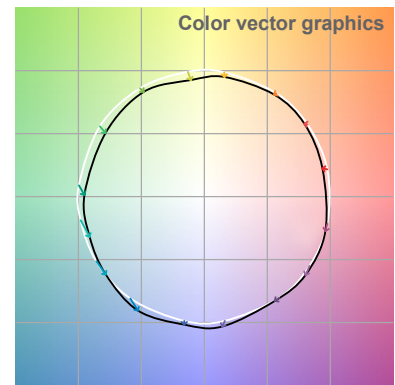
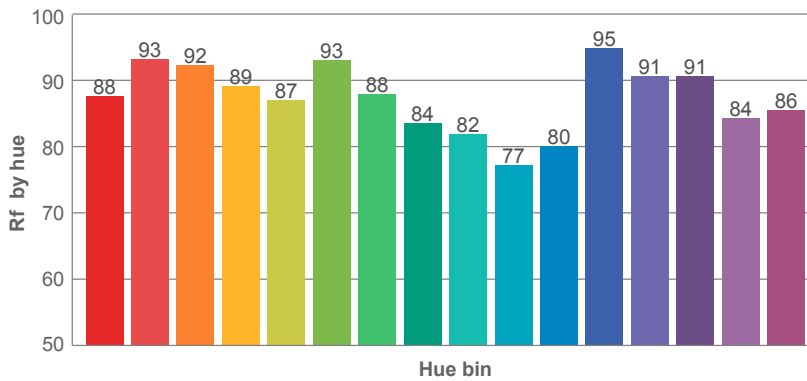
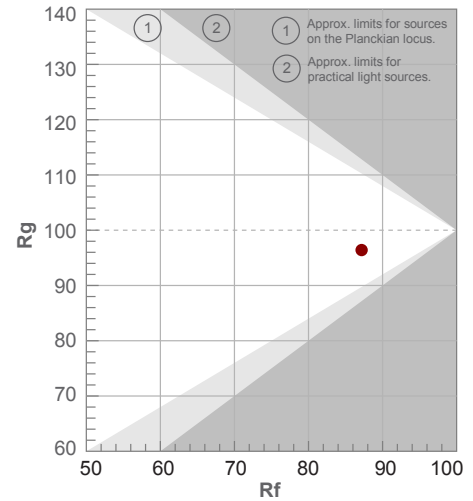
Color temperature	Color rendering index	Red component	Color fidelity	Color gamut	Color quality scale	Color coordinate cie 1931	Color coordinate cie 1931	Color coordinate	Color coordinate	Color deviation from black body
CCT	CRI	CRI R9	TM30 Rf	TM30 Rg	CQS	x	y	u	v	Δuv
5374 K	93.8	80.3	87.2	96.4	90.4	0.336	0.346	0.207	0.320	-0.0021

5000K

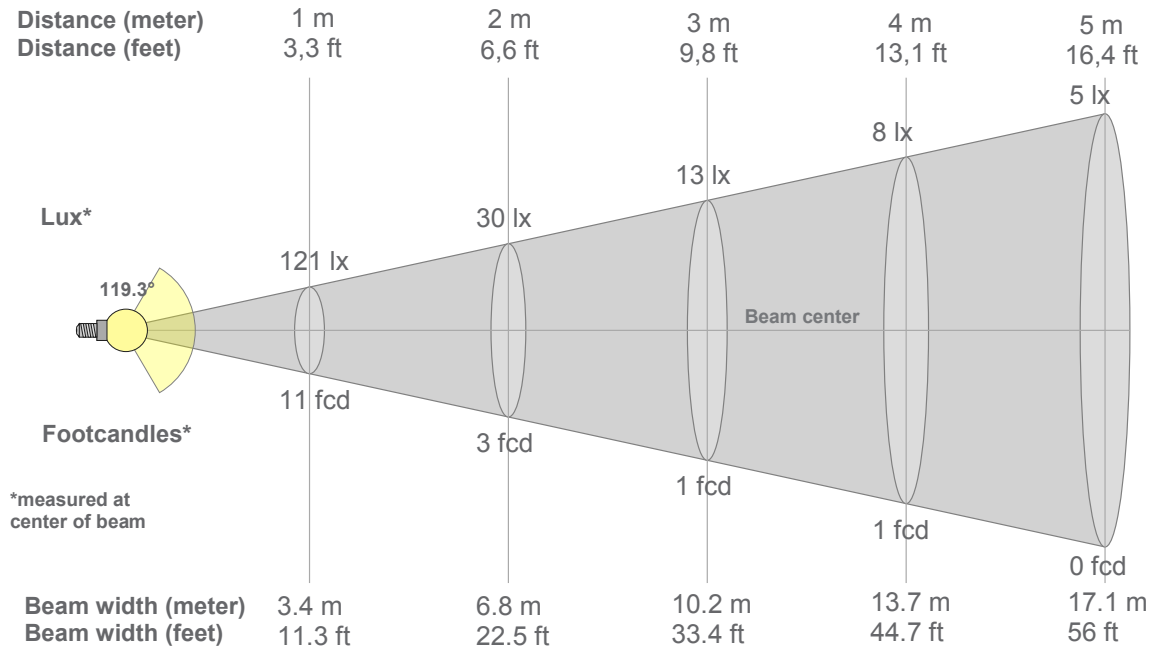
Rf 87.2
Fidelity index Rf

Rg 96.4
Gammut index Rg

		Graphic shifts (%)	
Hue Bin	R _f	Chroma	Hue
1	88	-4%	2%
2	93	-2%	2%
3	92	-2%	1%
4	89	-4%	-1%
5	87	-7%	-1%
6	93	-4%	-1%
7	88	-7%	2%
8	84	-6%	7%
9	82	-4%	14%
10	77	0%	13%
11	80	5%	10%
12	95	3%	1%
13	91	4%	-3%
14	91	0%	-4%
15	84	1%	-8%
16	86	0%	-6%



5000K



Beam intensities from 1-20m

1m	2m	3m	4m	5m	6m	7m	8m	9m	10m	11m	12m	13m	14m	15m	16m	17m	18m	19m	20m
3.3ft	6.6ft	9.8ft	13.1ft	16.4ft	19.7ft	23ft	26.2ft	29.5ft	32.8ft	36.1ft	39.4ft	42.7ft	45.9ft	49.2ft	52.5ft	55.8ft	59.1ft	62.3ft	65.6ft
121lx	30lx	13lx	8lx	5lx	3lx	2lx	2lx	1lx	1lx	1lx	1lx	1lx	1lx	1lx	0lx	0lx	0lx	0lx	0lx
11.2fcd	2.8fcd	1.2fcd	0.7fcd	0.4fcd	0.3fcd	0.2fcd	0.2fcd	0.1fcd	0.1fcd	0.1fcd	0.1fcd	0.1fcd	0.1fcd	0fcd	0fcd	0fcd	0fcd	0fcd	0fcd

Intensities in 0° c-plane

0°	5°	10°	15°	20°	25°	30°	35°	40°	45°	50°	55°	60°	65°	70°	75°	80°	85°	90°	95°
121	120	119	117	113	109	105	99	92	85	77	69	60	50	40	29	19	9	3	1
100%	100%	98%	96%	94%	91%	86%	82%	76%	71%	64%	57%	50%	41%	33%	24%	15%	8%	2%	1%

Intensities in 90° c-plane

0°	5°	10°	15°	20°	25°	30°	35°	40°	45°	50°	55°	60°	65°	70°	75°	80°	85°	90°	95°
121	120	119	117	113	109	105	99	92	85	77	69	60	50	40	29	19	9	3	1
100%	100%	98%	96%	94%	91%	86%	82%	76%	71%	64%	57%	50%	41%	33%	24%	15%	8%	2%	1%

Intensities in 180° c-plane

0°	5°	10°	15°	20°	25°	30°	35°	40°	45°	50°	55°	60°	65°	70°	75°	80°	85°	90°	95°
121	121	120	118	115	111	106	101	94	87	79	70	60	49	38	27	16	7	2	0
100%	100%	99%	97%	95%	92%	88%	83%	78%	72%	65%	58%	49%	41%	31%	22%	13%	6%	1%	0%

Intensities in 270° c-plane

0°	5°	10°	15°	20°	25°	30°	35°	40°	45°	50°	55°	60°	65°	70°	75°	80°	85°	90°	95°
121	121	120	118	115	111	106	101	94	87	79	70	60	49	38	27	16	7	2	0
100%	100%	99%	97%	95%	92%	88%	83%	78%	72%	65%	58%	49%	41%	31%	22%	13%	6%	1%	0%

Beam angle 50%	Field angle 10%	Cutoff angle 2,5%	Intensity ratio in 120° cone	Intensity ratio in 90° cone
119.3°	165.2°	177.2°	75.4%	50.4%